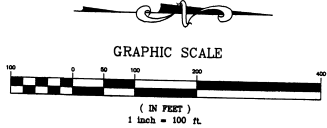
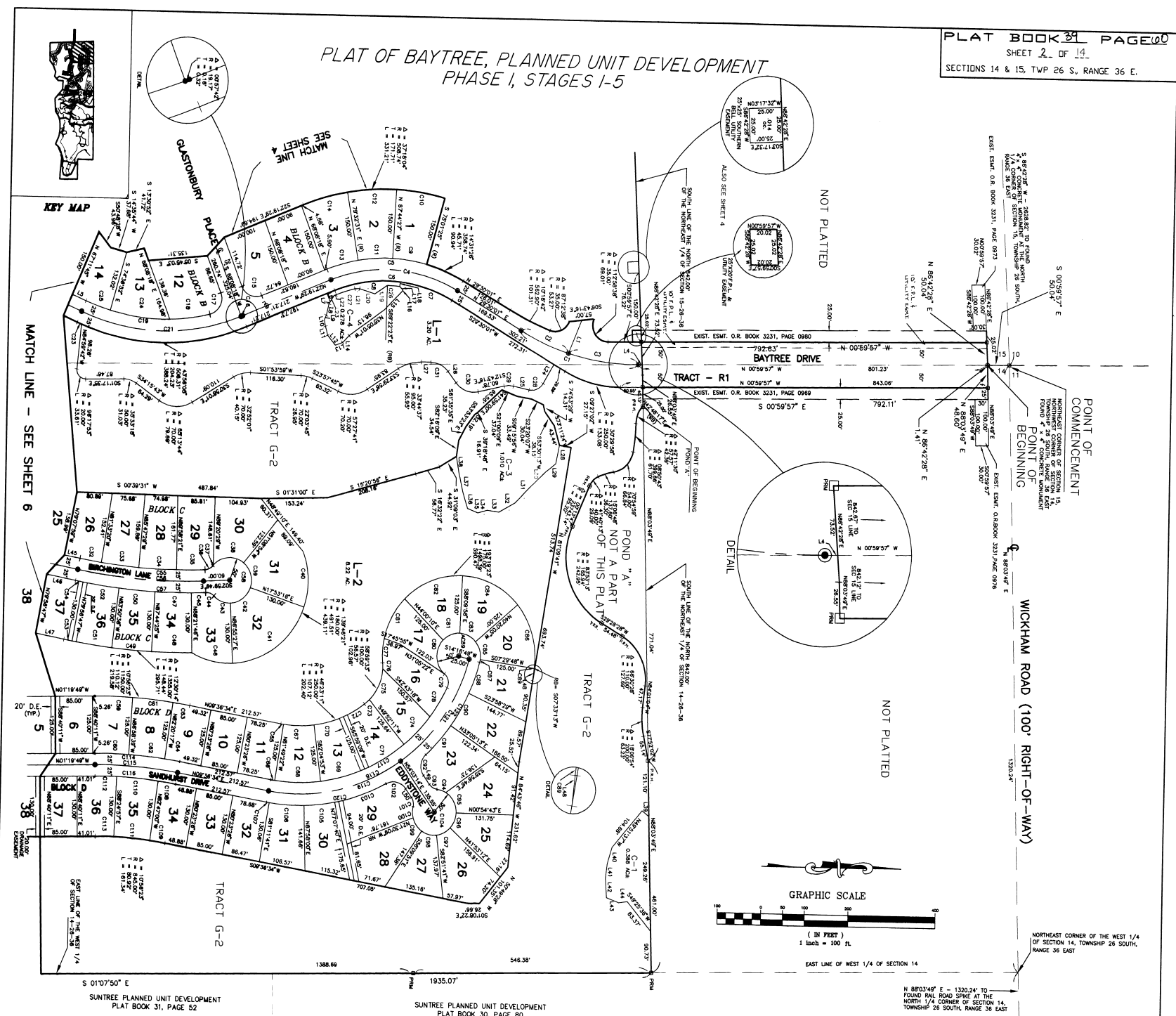


PLAT OF BAYTREE, PLANNED UNIT DEVELOPMENT
 PHASE I, STAGES 1-5



POINT OF COMMENCEMENT
 NORTHWEST CORNER OF SECTION 15,
 TOWNSHIP 26 SOUTH, RANGE 36 EAST
 FOUND AT THE POINT OF BEGINNING

WICKHAM ROAD (100' RIGHT-OF-WAY)
 130.24'

N 89°04'49" E - 130.24' TO
 FOUND RAIL ROAD STAKE AT THE
 NORTH 1/4 CORNER OF SECTION 14,
 TOWNSHIP 26 SOUTH, RANGE 36 EAST

S 01°07'50" E
 SUNTREE PLANNED UNIT DEVELOPMENT
 PLAT BOOK 31, PAGE 52

SUNTREE PLANNED UNIT DEVELOPMENT
 PLAT BOOK 30, PAGE 80

39-65