

# TUCKAWAY LAKE ESTATES

A SUBDIVISION OF A PORTION OF SECTION 20, TOWNSHIP 25 SOUTH, RANGE 36 EAST  
BREVARD COUNTY, FLORIDA

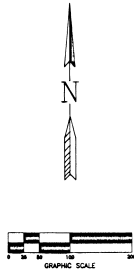
PLAT BOOK 29 PAGE 43

SHEET 3 OF 3

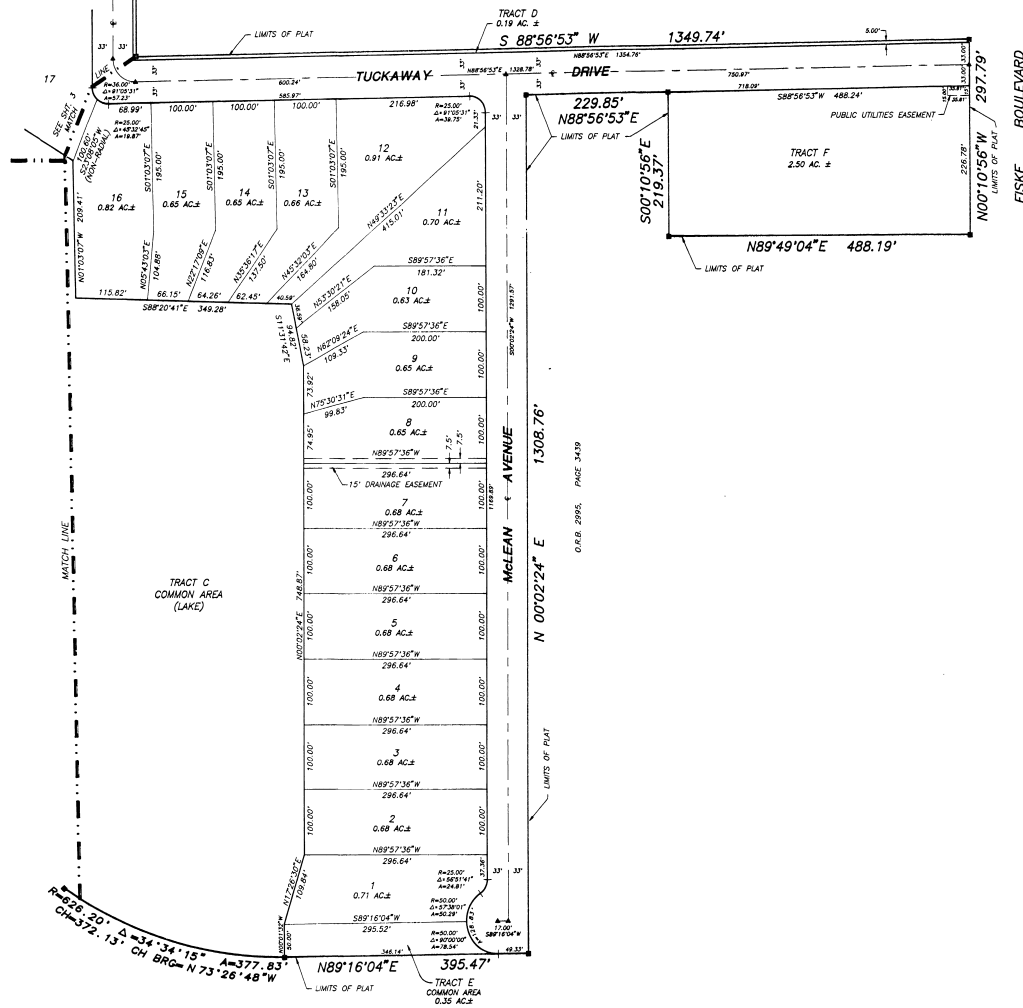
SECTION \_\_\_ TWP. \_\_\_ S., RANGE \_\_\_ E.

DEED BOOK 359, PAGE 578

QUIT CLAIM DEED PER  
OFFICIAL RECORDS BOOK 2803,  
PAGE 1551



ABBREVIATIONS:  
± = MORE OR LESS  
AC. = ACRES  
C = CENTERLINE  
R = RADIUS  
Δ = CENTRAL ANGLE  
A = ARC LENGTH  
CH = CHORD LENGTH  
CH BRG = CHORD BEARING



INTERSTATE 95 - FISKE BOULEVARD INTERCHANGE

NOTICE: THERE MAY BE ADDITIONAL RESTRICTIONS THAT ARE NOT RECORDED ON THIS PLAT THAT MAY BE FOUND IN THE PUBLIC RECORDS OF THIS COUNTY.

PREPARED BY:  
**ALLEN**  
Engineering, Inc.  
ENGINEERS - SURVEYORS  
ONE TREE LAKE PALM BEACH  
COCONA BEACH, FLORIDA 33462-1511  
407.786-7145

300439P3.DWG