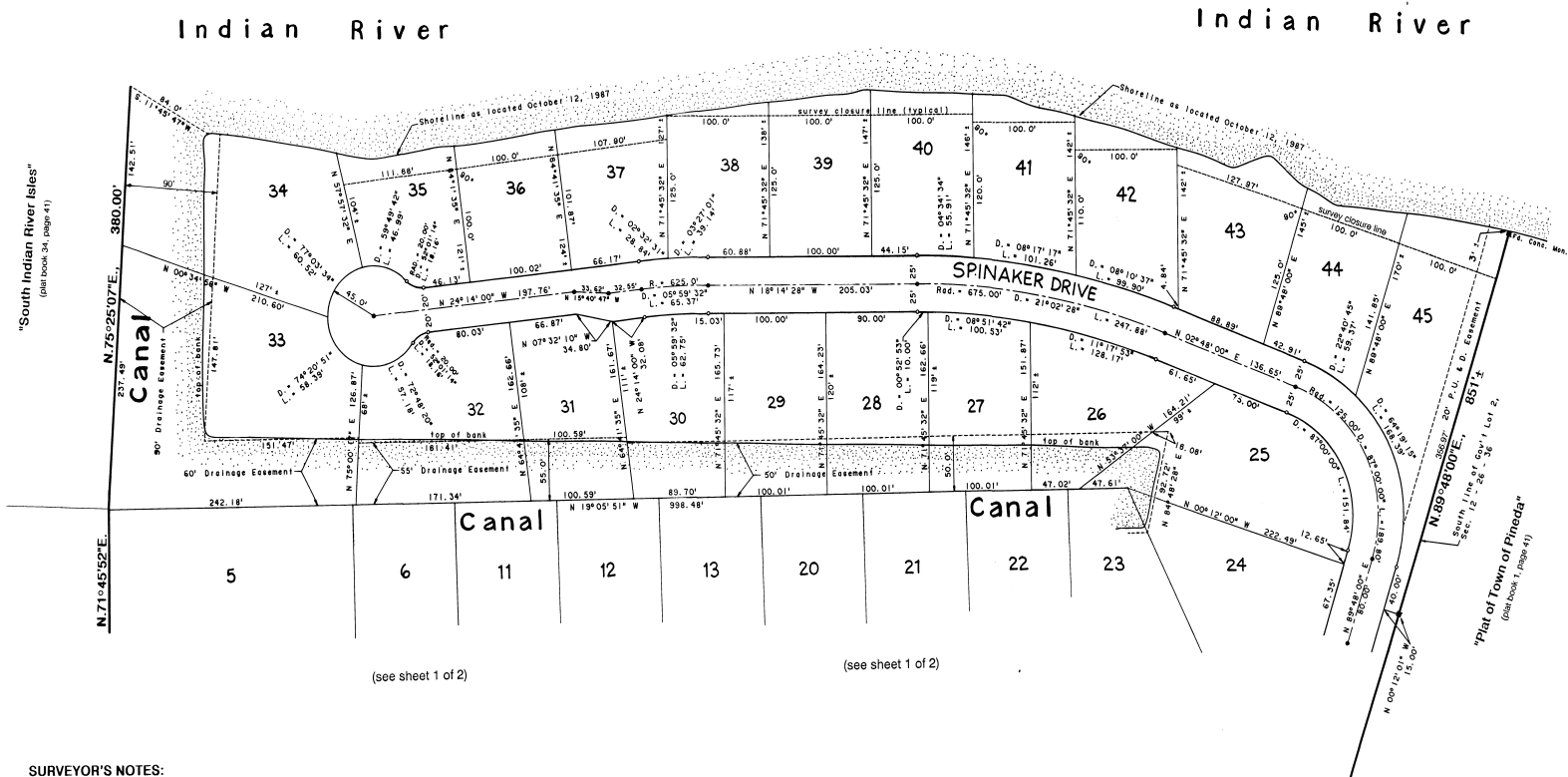


SOUTH INDIAN RIVER ISLES THIRD ADDITION

A SUBDIVISION LYING IN SECTION 12, TOWNSHIP 26 SOUTH, RANGE 36 EAST, BREVARD COUNTY, FLORIDA.



"South Indian River Isles, Second Addition"
 (plat book 36, page 22)

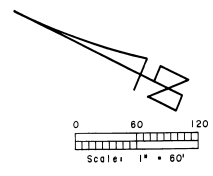
SURVEYOR'S NOTES:

- - indicates concrete monuments found or permanent reference monuments set.
- - indicates permanent control points.

The bearing structure of this record plat is based on the subdivision record plat of INDIAN RIVER ISLES, SECOND ADDITION, recorded in Plat Book 36, Page 32 of the public records of Brevard County, Florida.

NOTICE:
 There may be additional restrictions that are not recorded on this plat that may be found in the public records of Brevard County, Florida.

EASEMENTS:
 A strip of land 5 feet in width is hereby dedicated along all front, side and rear lot lines for the installation and maintenance of public utilities and drainage, unless otherwise noted.
 Public Utility Easements dedicated hereon include the installation and maintenance of Florida Power & Light Co. facilities and cable television services.



R.M. PACKARD & ASSOC., INC.
 LAND SURVEYORS
 376 Brevard Avenue
 Rockledge, Florida 32955
 (407) 532-6335