

# CYPRESS CREEK SUBDIVISION PHASE ONE

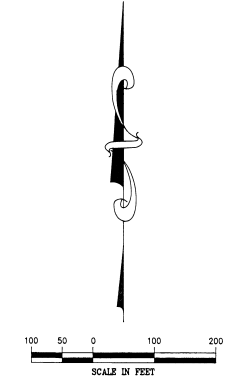
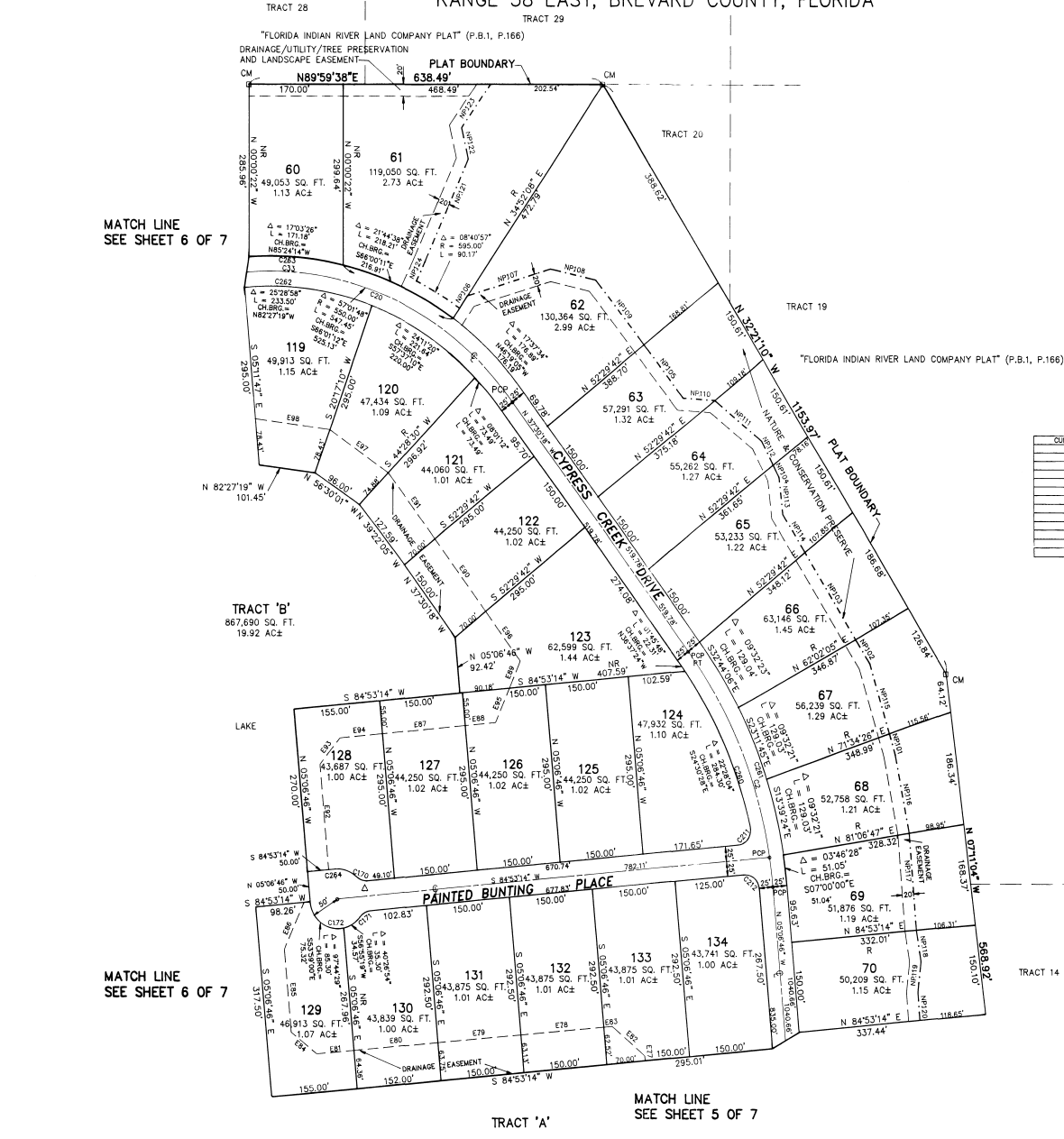
PLAT BOOK 38  
AND PAGE 67  
SHEET 7 OF 7

A REPLAT OF ALL TRACTS 3, 4, 5, 6, 11, 12, 13, 21 AND 22 AND PORTIONS OF TRACTS 2, 14, 15, 19 AND 20 "FLORIDA INDIAN RIVER COMPANY PLAT" AS RECORDED IN PLAT BOOK 1, PAGE 166 OF THE PUBLIC RECORDS OF BREVARD COUNTY, FLORIDA, IN SECTION 29, TOWNSHIP 29 SOUTH, RANGE 38 EAST, BREVARD COUNTY, FLORIDA

MATCH LINE  
SEE SHEET 6 OF 7

MATCH LINE  
SEE SHEET 6 OF 7

MATCH LINE  
SEE SHEET 5 OF 7



CURVE TABLE

CURVE	RADIUS	LENGTH	CHORD	BEARING	DELTA
C2	750.00'	474.01'	418.39'	N 21°18'35" W	32°23'03"
C23	550.00'	1453.67'	1065.21'	S 64°56'39" W	151°03'01"
C33	550.00'	1239.48'	993.35'	S 77°36'04" W	129°07'17"
C370	25.00'	21.00'	20.41'	S 71°31'04" E	48°12'24"
C371	25.00'	21.00'	20.41'	S 69°42'53" W	48°12'24"
C372	50.00'	130.59'	98.42'	S 74°22'27" E	138°12'23"
C211	25.00'	42.83'	37.78'	N 33°48'24" E	89°09'40"
C212	25.00'	39.27'	35.38'	N 50°06'46" W	80°00'00"
C260	725.00'	206.81'	304.33'	N 25°23'22" W	24°13'52"
C261	725.00'	438.15'	432.54'	N 21°18'35" W	32°23'03"
C262	525.00'	1384.34'	1016.79'	S 66°58'39" W	151°06'07"
C263	575.00'	1247.84'	1016.99'	S 60°19'28" W	124°02'28"
C264	50.00'	42.05'	40.82'	S 71°01'04" W	48°11'23"

EASEMENT LINE TABLE

LINE	DIRECTION	DISTANCE
E77	N 05°08'46" W	50.00'
E78	S 85°07'17" W	150.00'
E79	S 85°07'17" W	150.00'
E80	S 85°07'17" W	150.00'
E81	S 85°07'17" W	68.95'
E82	N 49°08'44" W	76.77'
E83	S 85°07'17" W	156.87'
E84	N 51°43'34" W	58.38'
E85	N 05°08'46" W	137.78'
E86	N 24°17'19" E	69.55'
E87	N 84°53'14" E	150.00'
E88	N 84°53'14" E	59.84'
E89	N 23°41'28" W	49.48'
E90	N 37°30'18" W	150.00'
E91	N 37°30'18" W	137.87'
E92	N 50°06'46" W	155.89'
E93	N 39°31'14" E	59.27'
E94	N 84°53'14" E	76.13'
E95	N 23°41'28" W	67.72'
E96	N 37°30'18" W	102.51'
E97	N 55°13'52" W	128.21'
E98	N 82°17'19" W	138.05'

NATURE & CONSERVATION PRESERVE LINE TABLE

LINE	DIRECTION	DISTANCE
NP101	S 16°41'39" E	35.87'
NP102	S 32°28'52" E	47.84'
NP103	S 32°28'52" E	165.74'
NP104	S 27°01'07" E	23.10'
NP105	S 30°03'00" E	117.42'
NP106	N 34°52'09" E	25.20'
NP107	N 73°15'30" E	156.52'
NP108	S 77°13'52" E	63.74'
NP109	S 39°09'43" E	137.65'
NP110	S 86°14'42" E	57.02'
NP111	S 51°13'27" E	106.56'
NP112	S 27°01'07" E	45.29'
NP113	S 08°02'14" E	62.50'
NP114	S 32°28'52" E	74.19'
NP115	S 16°41'39" E	121.76'
NP116	S 11°03'44" E	131.58'
NP117	S 04°35'08" E	161.75'
NP118	S 00°00'00" E	53.86'
NP119	S 08°13'29" W	51.60'
NP120	S 04°13'11" E	45.67'
NP121	N 24°29'00" E	188.80'
NP122	N 37°18'06" E	52.85'
NP123	N 38°15'57" E	86.59'
NP124	S 28°11'10" W	34.80'