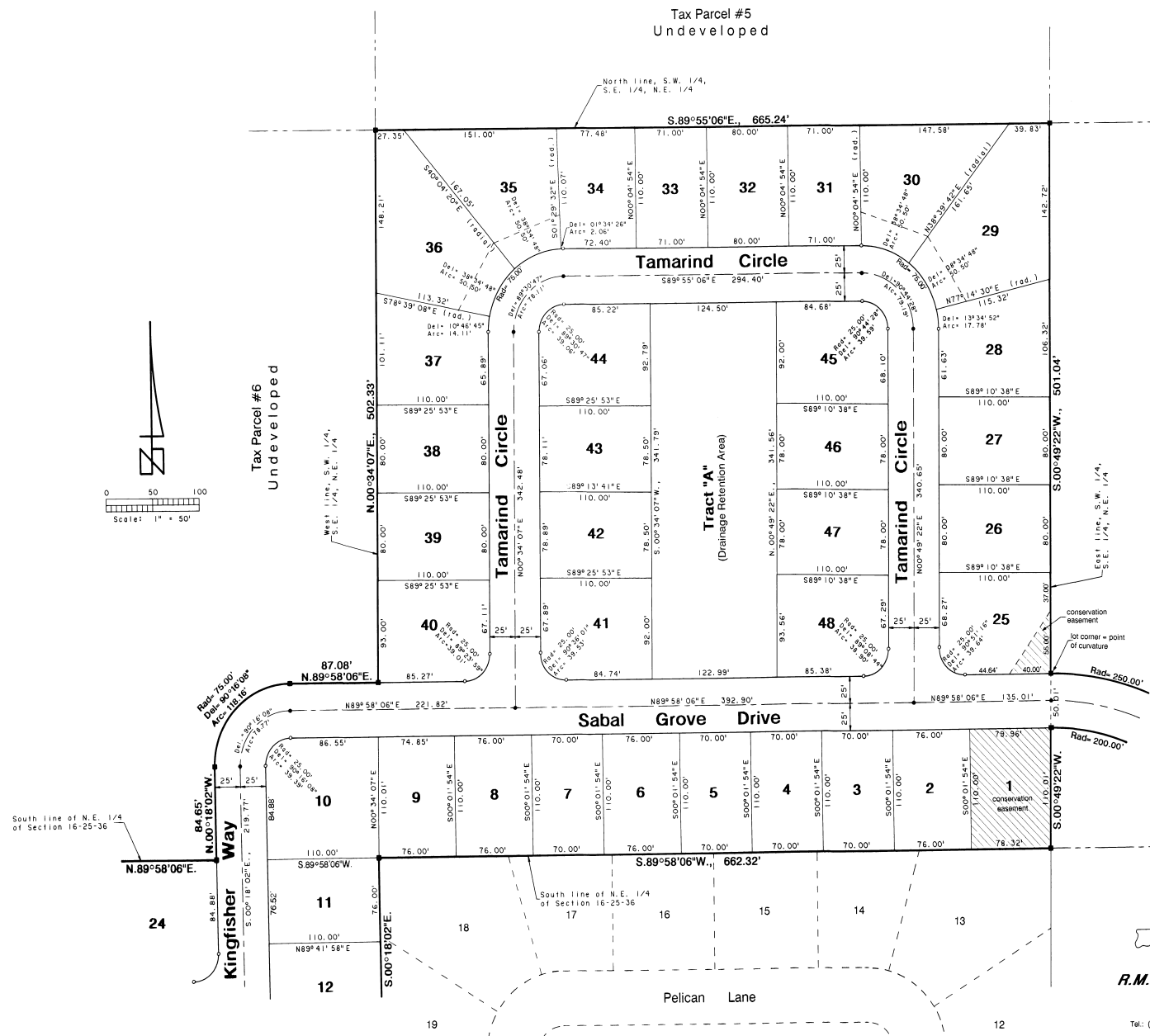


# SABAL GROVE, UNIT ONE

A SUBDIVISION LYING IN SECTION 16, TOWNSHIP 25 SOUTH, RANGE 36 EAST AND BEING IN THE CITY OF ROCKLEDGE, BREVARD COUNTY, FLORIDA



Tax Parcel #5  
Undeveloped

Tax Parcel #6  
Undeveloped

Portion of Tax Parcel #8  
Undeveloped

South line of N.E. 1/4  
of Section 16-25-36

South line of N.E. 1/4  
of Section 16-25-36

"Pelican Harbour, Unit Two"  
plat book 36, page 19

