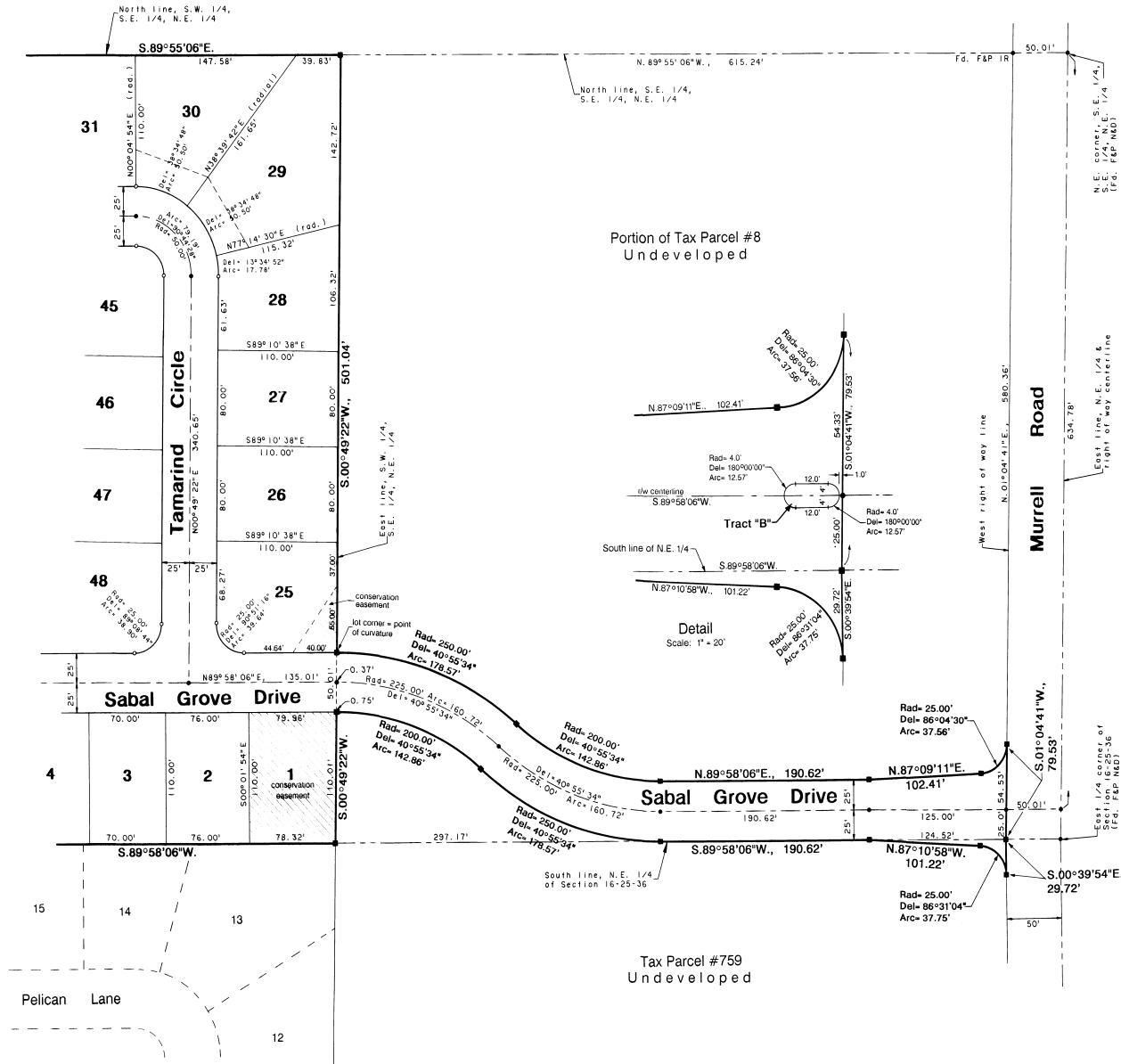


SABAL GROVE, UNIT ONE

A SUBDIVISION LYING IN SECTION 16, TOWNSHIP 25 SOUTH, RANGE 36 EAST
AND BEING IN THE CITY OF ROCKLEDGE, BREVARD COUNTY, FLORIDA

PLAT BOOK 38 PAGE 49
SHEET 2 OF 4
SECTION 16, TWP. 25 S., RGE. 36 E.



"Pelican Harbour, Unit Two"
plat book 36, page 19

