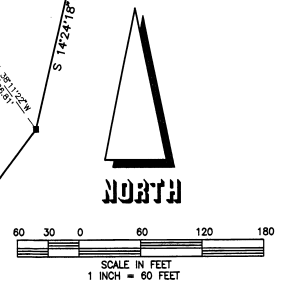
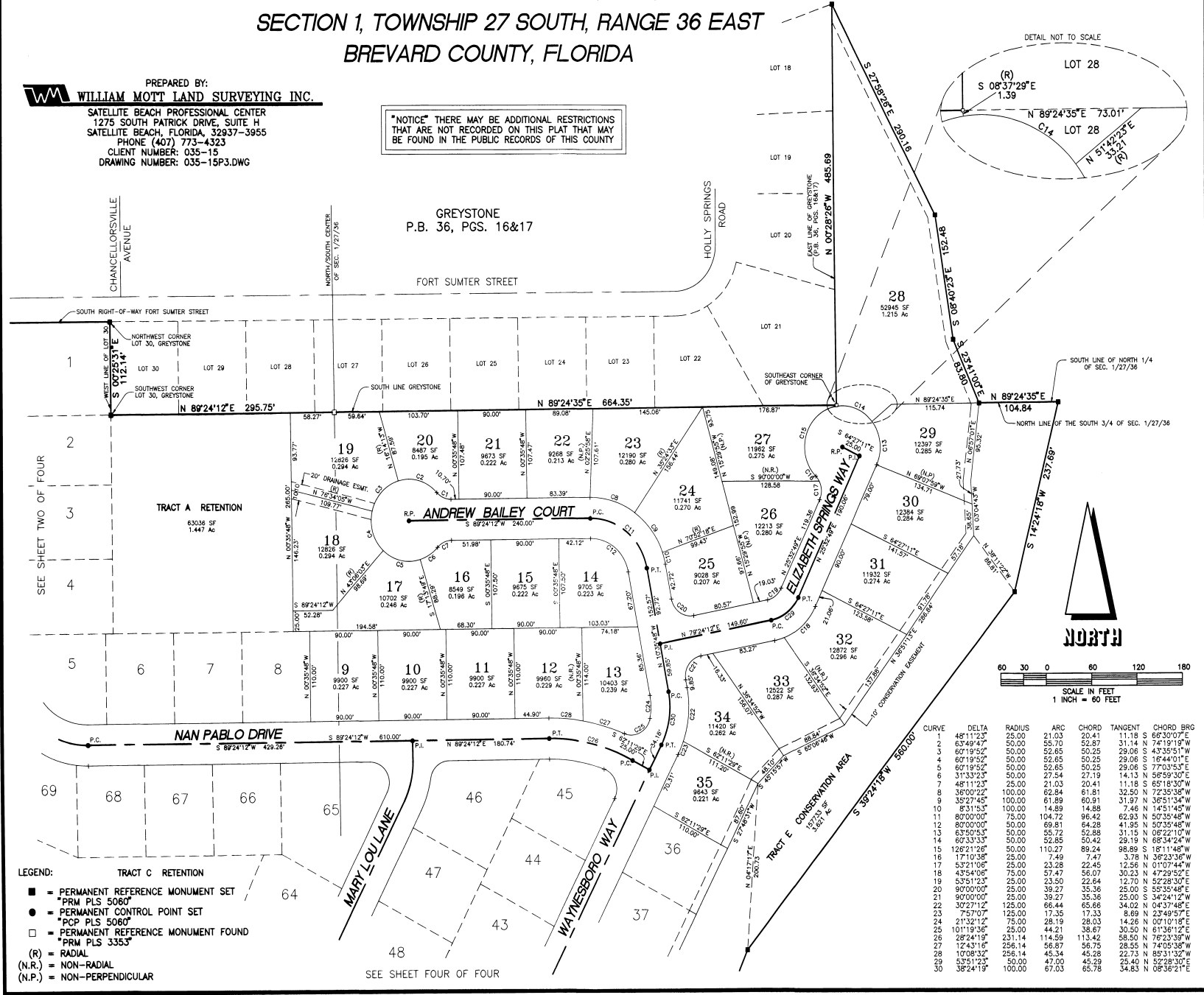


GREYSTONE PHASE II AND A REPLAT OF LOTS 31,32,&33 GREYSTONE

SECTION 1, TOWNSHIP 27 SOUTH, RANGE 36 EAST
BREVARD COUNTY, FLORIDA

PREPARED BY:
WILLIAM MOTT LAND SURVEYING INC.
SATELLITE BEACH PROFESSIONAL CENTER
1275 SOUTH PATRICK DRIVE, SUITE H
SATELLITE BEACH, FLORIDA, 32937-3955
PHONE (407) 773-4323
CLIENT NUMBER: 035-15
DRAWING NUMBER: 035-15P3.DWG

"NOTICE" THERE MAY BE ADDITIONAL RESTRICTIONS
THAT ARE NOT RECORDED ON THIS PLAT THAT MAY
BE FOUND IN THE PUBLIC RECORDS OF THIS COUNTY



- LEGEND:
- = PERMANENT REFERENCE MONUMENT SET
PRM PLS 5060"
 - = PERMANENT CONTROL POINT SET
PCP PLS 5060"
 - = PERMANENT REFERENCE MONUMENT FOUND
PRM PLS 3353"
 - (R) = RADIAL
 - (N.R.) = NON-RADIAL
 - (N.P.) = NON-PERPENDICULAR

CURVE	DELTA	RADIUS	ARC	CHORD	TANGENT	CHORD BRG
1	48°11'23"	25.00	21.03	20.41	11.18	S 66°30'07"E
2	63°40'53"	50.00	55.70	52.87	31.14	N 74°19'19"W
3	60°19'52"	50.00	52.65	50.25	29.06	S 43°35'51"W
4	60°19'52"	50.00	52.65	50.25	29.06	S 16°44'01"E
5	60°19'52"	50.00	52.65	50.25	29.06	S 77°03'53"E
6	31°33'23"	50.00	27.54	27.19	14.13	N 56°59'30"E
7	48°11'23"	25.00	21.03	20.41	11.18	S 65°18'30"W
8	38°00'22"	100.00	62.84	61.81	32.50	N 72°35'38"W
9	32°27'45"	100.00	61.89	60.91	31.97	N 36°51'34"W
10	8°31'53"	100.00	14.89	14.88	7.48	N 14°51'45"W
11	80°00'00"	75.00	104.72	96.42	62.93	N 50°35'48"W
12	80°00'00"	50.00	69.81	64.28	41.95	N 50°35'48"W
13	63°50'53"	50.00	55.72	52.88	31.15	N 02°22'10"W
14	60°33'33"	50.00	52.85	50.42	29.19	N 68°34'24"W
15	126°21'28"	50.00	110.27	89.24	98.89	S 18°11'48"W
16	17°10'38"	50.00	7.49	7.47	3.78	N 36°23'36"W
17	53°21'06"	25.00	23.28	22.45	12.56	N 01°07'44"W
18	43°54'06"	75.00	57.47	56.07	30.23	N 47°29'52"E
19	53°51'23"	25.00	23.50	22.84	12.70	N 52°28'30"E
20	90°00'00"	25.00	39.27	35.36	25.00	S 55°35'48"E
21	90°00'00"	25.00	39.27	35.36	25.00	S 34°24'12"W
22	322°71'2"	125.00	86.44	65.66	34.02	O 43°37'48"E
23	75°07'	125.00	17.35	17.33	8.69	N 23°49'57"E
24	21°32'12"	75.00	28.19	28.03	14.26	N 00°10'18"E
25	101°13'36"	25.00	44.21	38.67	30.50	N 61°36'12"E
26	28°24'19"	231.14	114.59	113.42	58.50	N 76°23'39"W
27	12°43'16"	256.14	56.87	56.75	28.55	N 74°05'38"W
28	10°08'33"	256.14	45.26	45.34	22.73	S 83°31'32"W
29	53°51'23"	50.00	47.00	45.29	25.40	N 52°28'30"E
30	38°24'19"	100.00	67.03	65.78	34.83	N 08°36'21"E