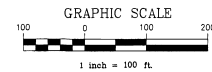


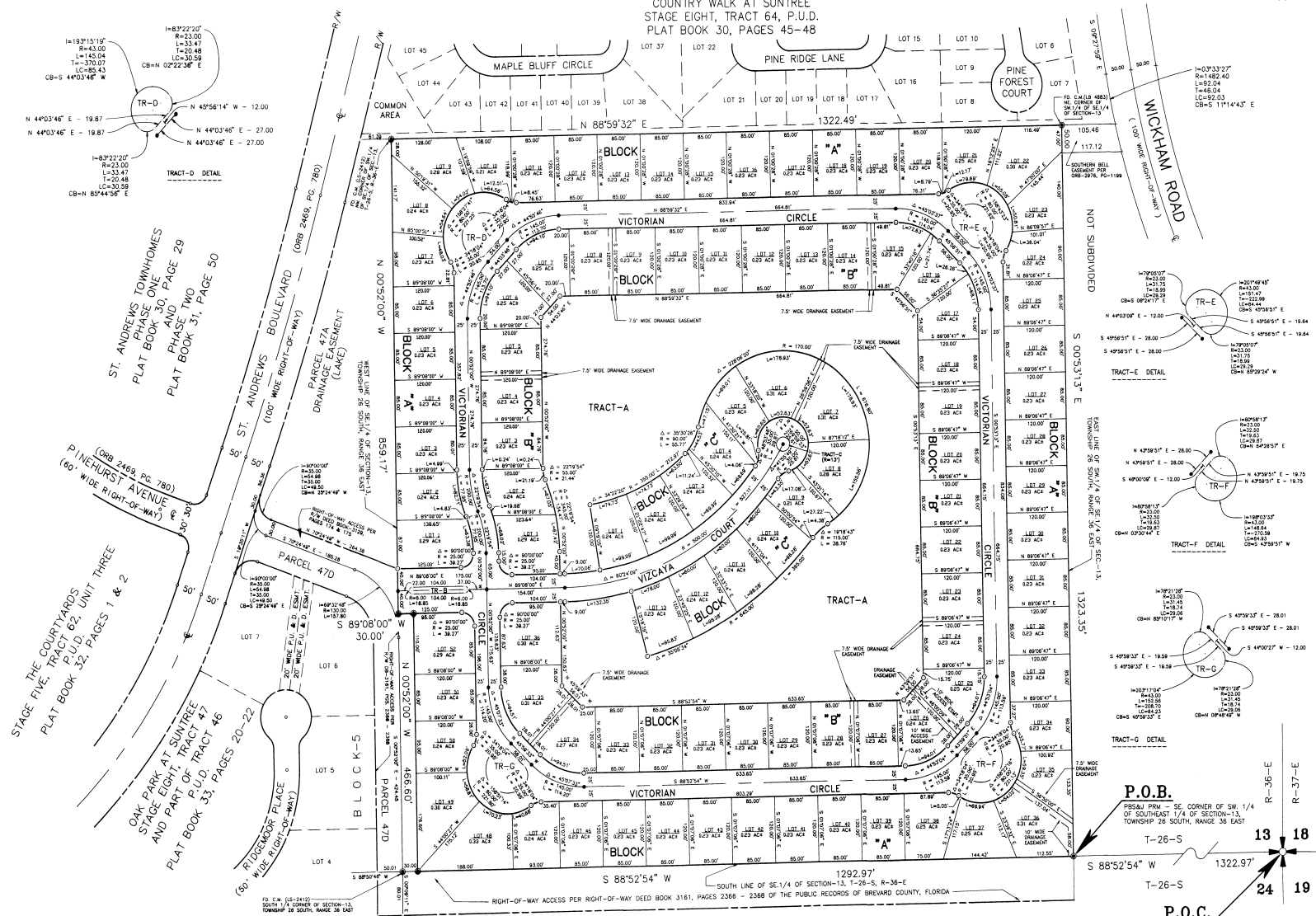
VIZCAYA ESTATES

A PORTION OF THE SW.1/4 OF THE SE.1/4 OF SECTION 13,
TOWNSHIP 26 SOUTH, RANGE 36 EAST, BREVARD COUNTY, FLORIDA

PLAT BOOK 38 PAGE 13
SHEET 2 OF 2
SECTION 13 TWP. 26 S., RANGE 36 E.



COUNTRY WALK AT SUNTREE
STAGE EIGHT, TRACT 64, P.U.D.
PLAT BOOK 30, PAGES 45-48



THIS PLAT WAS PREPARED BY: POST, BUCKLEY, SCHUH & JERNIGAN, INC.
8787 NORTH WICKHAM ROAD, SUITE 106, MELBOURNE, FLORIDA 32940

NOT SUBDIVIDED

P.O.B.

PERM & PREM - SE CORNER OF SW. 1/4 OF SECTION-13, T-26-S, R-36-E

T-26-S

S 88°52'54" W 1322.97'

T-26-S

P.O.C.

P.O.C. - SOUTHWEST CORNER OF SECTION 13, TOWNSHIP 26 SOUTH, RANGE 36 EAST, BREVARD COUNTY, FLORIDA

R-36-E

R-37-E

13 18
24 19

CADD WORKS BY: TJC & JTS