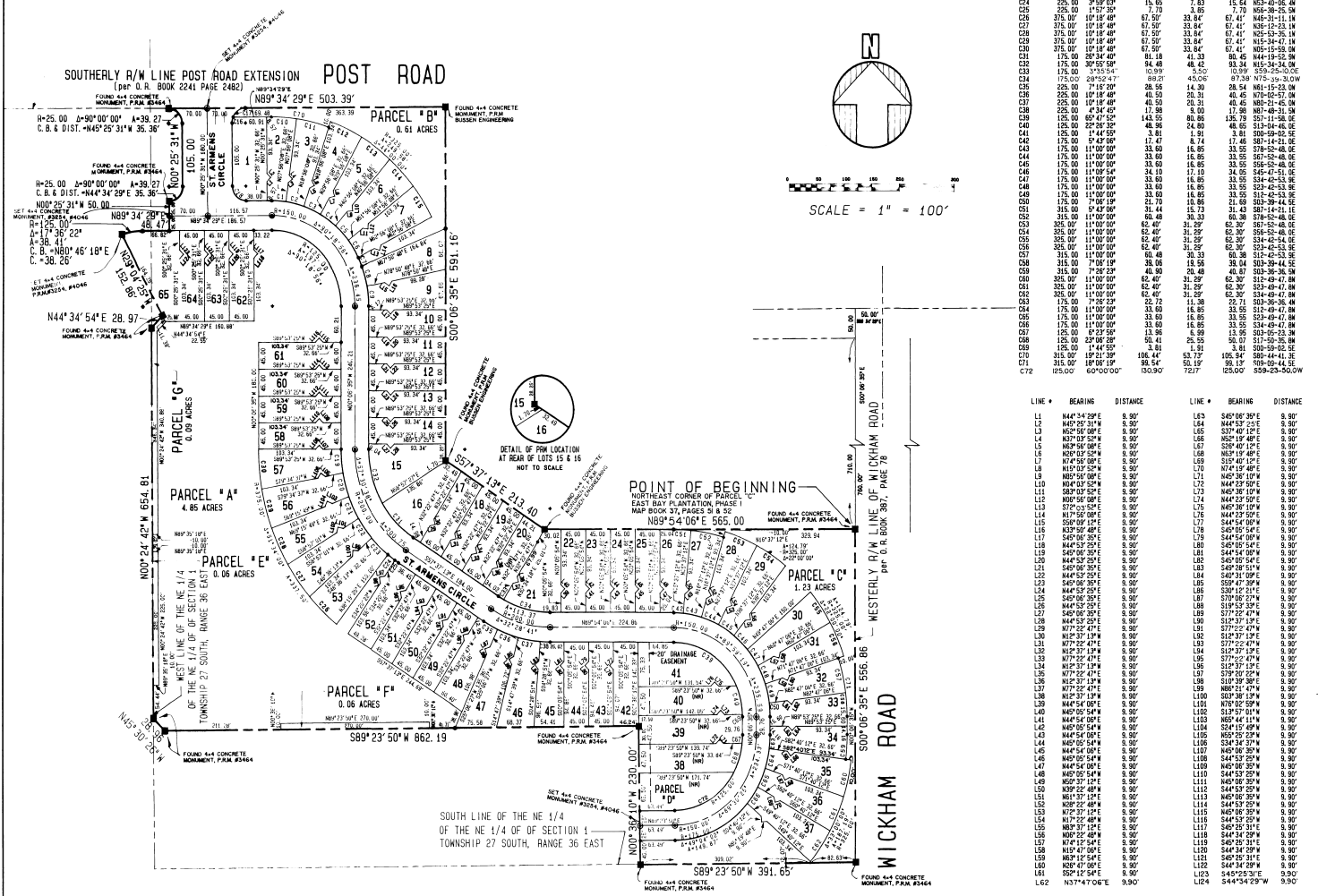


EAST BAY PLANTATION PHASE I REPLAT

A ZERO LOT LINE SUBDIVISION SITUATED IN SECTION 1, TOWNSHIP 27 SOUTH, RANGE 36 EAST, CITY OF MELBOURNE, BREVARD COUNTY, FLORIDA



Curve #	Radius	Delta	Length	Tangent	Chord/Dir
C1	175.00	0°21'39"	25.54	12.79	25.54 S86°14'41.3E
C2	175.00	11°00'00"	33.60	16.80	33.60 S76°33'51.7E
C3	175.00	11°00'00"	33.60	16.80	33.60 S66°53'11.7E
C4	175.00	11°00'00"	33.60	16.80	33.60 S57°12'31.7E
C5	175.00	11°00'00"	33.60	16.80	33.60 S47°31'51.7E
C6	175.00	11°00'00"	33.60	16.80	33.60 S37°51'11.7E
C7	175.00	11°00'00"	33.60	16.80	33.60 S28°10'31.7E
C8	175.00	11°00'00"	33.60	16.80	33.60 S18°29'51.7E
C9	175.00	11°00'00"	33.60	16.80	33.60 S8°49'11.7E
C10	175.00	11°00'00"	33.60	16.80	33.60 S0°00'00"0E
C11	175.00	11°00'00"	33.60	16.80	33.60 N0°00'00"0E
C12	175.00	11°00'00"	33.60	16.80	33.60 N09°00'00"0E
C13	175.00	11°00'00"	33.60	16.80	33.60 N18°00'00"0E
C14	175.00	11°00'00"	33.60	16.80	33.60 N27°00'00"0E
C15	175.00	11°00'00"	33.60	16.80	33.60 N36°00'00"0E
C16	175.00	11°00'00"	33.60	16.80	33.60 N45°00'00"0E
C17	175.00	11°00'00"	33.60	16.80	33.60 N54°00'00"0E
C18	175.00	11°00'00"	33.60	16.80	33.60 N63°00'00"0E
C19	175.00	11°00'00"	33.60	16.80	33.60 N72°00'00"0E
C20	175.00	11°00'00"	33.60	16.80	33.60 N81°00'00"0E
C21	175.00	11°00'00"	33.60	16.80	33.60 N90°00'00"0E
C22	175.00	11°00'00"	33.60	16.80	33.60 S0°00'00"0E
C23	175.00	11°00'00"	33.60	16.80	33.60 S9°00'00"0E
C24	175.00	11°00'00"	33.60	16.80	33.60 S18°00'00"0E
C25	175.00	11°00'00"	33.60	16.80	33.60 S27°00'00"0E
C26	175.00	11°00'00"	33.60	16.80	33.60 S36°00'00"0E
C27	175.00	11°00'00"	33.60	16.80	33.60 S45°00'00"0E
C28	175.00	11°00'00"	33.60	16.80	33.60 S54°00'00"0E
C29	175.00	11°00'00"	33.60	16.80	33.60 S63°00'00"0E
C30	175.00	11°00'00"	33.60	16.80	33.60 S72°00'00"0E
C31	175.00	11°00'00"	33.60	16.80	33.60 S81°00'00"0E
C32	175.00	11°00'00"	33.60	16.80	33.60 S90°00'00"0E
C33	175.00	11°00'00"	33.60	16.80	33.60 N0°00'00"0E
C34	175.00	11°00'00"	33.60	16.80	33.60 N9°00'00"0E
C35	175.00	11°00'00"	33.60	16.80	33.60 N18°00'00"0E
C36	175.00	11°00'00"	33.60	16.80	33.60 N27°00'00"0E
C37	175.00	11°00'00"	33.60	16.80	33.60 N36°00'00"0E
C38	175.00	11°00'00"	33.60	16.80	33.60 N45°00'00"0E
C39	175.00	11°00'00"	33.60	16.80	33.60 N54°00'00"0E
C40	175.00	11°00'00"	33.60	16.80	33.60 N63°00'00"0E
C41	175.00	11°00'00"	33.60	16.80	33.60 N72°00'00"0E
C42	175.00	11°00'00"	33.60	16.80	33.60 N81°00'00"0E
C43	175.00	11°00'00"	33.60	16.80	33.60 N90°00'00"0E
C44	175.00	11°00'00"	33.60	16.80	33.60 S0°00'00"0E
C45	175.00	11°00'00"	33.60	16.80	33.60 S9°00'00"0E
C46	175.00	11°00'00"	33.60	16.80	33.60 S18°00'00"0E
C47	175.00	11°00'00"	33.60	16.80	33.60 S27°00'00"0E
C48	175.00	11°00'00"	33.60	16.80	33.60 S36°00'00"0E
C49	175.00	11°00'00"	33.60	16.80	33.60 S45°00'00"0E
C50	175.00	11°00'00"	33.60	16.80	33.60 S54°00'00"0E
C51	175.00	11°00'00"	33.60	16.80	33.60 S63°00'00"0E
C52	175.00	11°00'00"	33.60	16.80	33.60 S72°00'00"0E
C53	175.00	11°00'00"	33.60	16.80	33.60 S81°00'00"0E
C54	175.00	11°00'00"	33.60	16.80	33.60 S90°00'00"0E
C55	175.00	11°00'00"	33.60	16.80	33.60 N0°00'00"0E
C56	175.00	11°00'00"	33.60	16.80	33.60 N9°00'00"0E
C57	175.00	11°00'00"	33.60	16.80	33.60 N18°00'00"0E
C58	175.00	11°00'00"	33.60	16.80	33.60 N27°00'00"0E
C59	175.00	11°00'00"	33.60	16.80	33.60 N36°00'00"0E
C60	175.00	11°00'00"	33.60	16.80	33.60 N45°00'00"0E
C61	175.00	11°00'00"	33.60	16.80	33.60 N54°00'00"0E
C62	175.00	11°00'00"	33.60	16.80	33.60 N63°00'00"0E
C63	175.00	11°00'00"	33.60	16.80	33.60 N72°00'00"0E
C64	175.00	11°00'00"	33.60	16.80	33.60 N81°00'00"0E
C65	175.00	11°00'00"	33.60	16.80	33.60 N90°00'00"0E
C66	175.00	11°00'00"	33.60	16.80	33.60 S0°00'00"0E
C67	175.00	11°00'00"	33.60	16.80	33.60 S9°00'00"0E
C68	175.00	11°00'00"	33.60	16.80	33.60 S18°00'00"0E
C69	175.00	11°00'00"	33.60	16.80	33.60 S27°00'00"0E
C70	175.00	11°00'00"	33.60	16.80	33.60 S36°00'00"0E
C71	175.00	11°00'00"	33.60	16.80	33.60 S45°00'00"0E
C72	175.00	11°00'00"	33.60	16.80	33.60 S54°00'00"0E

LINE #	BEARING	DISTANCE	LINE #	BEARING	DISTANCE
L1	N44°34'29"E	9.90	L63	S47°09'30"E	9.90
L2	N45°05'31"E	9.90	L64	N44°55'25"E	9.90
L3	N50°55'08"E	9.90	L65	S37°40'12"E	9.90
L4	N43°05'54"E	9.90	L66	N57°19'48"E	9.90
L5	N59°58'08"E	9.90	L67	S29°40'12"E	9.90
L6	N20°05'54"E	9.90	L68	N68°19'48"E	9.90
L7	N74°58'08"E	9.90	L69	S18°40'12"E	9.90
L8	N10°05'54"E	9.90	L70	N74°19'48"E	9.90
L9	N45°58'08"E	9.90	L71	N45°38'10"E	9.90
L10	N40°05'54"E	9.90	L72	N44°55'25"E	9.90
L11	S83°05'52"E	9.90	L73	N45°38'10"E	9.90
L12	N40°05'54"E	9.90	L74	N44°55'25"E	9.90
L13	S73°05'52"E	9.90	L75	N44°55'25"E	9.90
L14	N14°58'08"E	9.90	L76	S47°09'30"E	9.90
L15	S20°05'54"E	9.90	L77	S44°54'08"E	9.90
L16	N33°58'08"E	9.90	L78	S47°09'30"E	9.90
L17	S45°05'54"E	9.90	L79	S44°54'08"E	9.90
L18	N44°58'08"E	9.90	L80	S47°09'30"E	9.90
L19	S45°05'54"E	9.90	L81	S44°54'08"E	9.90
L20	N44°58'08"E	9.90	L82	S47°09'30"E	9.90
L21	S45°05'54"E	9.90	L83	S44°54'08"E	9.90
L22	N44°58'08"E	9.90	L84	S44°54'08"E	9.90
L23	S45°05'54"E	9.90	L85	S29°40'12"E	9.90
L24	N44°58'08"E	9.90	L86	S30°12'21"E	9.90
L25	S45°05'54"E	9.90	L87	S70°22'47"E	9.90
L26	N44°58'08"E	9.90	L88	S19°53'39"E	9.90
L27	S45°05'54"E	9.90	L89	S70°22'47"E	9.90
L28	N44°58'08"E	9.90	L90	S12°37'53"E	9.90
L29	S45°05'54"E	9.90	L91	S77°22'47"E	9.90
L30	N44°58'08"E	9.90	L92	S77°22'47"E	9.90
L31	S45°05'54"E	9.90	L93	S77°22'47"E	9.90
L32	N44°58'08"E	9.90	L94	S12°37'53"E	9.90
L33	S45°05'54"E	9.90	L95	S77°22'47"E	9.90
L34	N44°58'08"E	9.90	L96	S12°37'53"E	9.90
L35	S45°05'54"E	9.90	L97	S70°22'47"E	9.90
L36	N44°58'08"E	9.90	L98	N68°19'48"E	9.90
L37	S45°05'54"E	9.90	L99	N68°19'48"E	9.90
L38	N44°58'08"E	9.90	L100	N70°02'59"E	9.90
L39	S45°05'54"E	9.90	L101	N70°02'59"E	9.90
L40	N44°58'08"E	9.90	L102	S13°57'14"E	9.90
L41	S45°05'54"E	9.90	L103	N65°44'11"E	9.90
L42	N44°58'08"E	9.90	L104	S24°15'49"E	9.90
L43	S45°05'54"E	9.90	L105	N65°44'11"E	9.90
L44	N44°58'08"E	9.90	L106	S34°34'37"E	9.90
L45	S45°05'54"E	9.90	L107	N45°00'00"E	9.90
L46	N44°58'08"E	9.90	L108	S44°53'29"E	9.90
L47	S45°05'54"E	9.90	L109	S44°53'29"E	9.90
L48	N44°58'08"E	9.90	L110	S44°53'29"E	9.90
L49	S45°05'54"E	9.90	L111	S44°53'29"E	9.90
L50	N44°58'08"E	9.90	L112	S44°53'29"E	9.90
L51	S45°05'54"E	9.90	L113	N45°00'00"E	9.90
L52	N44°58'08"E	9.90	L114	S44°53'29"E	9.90
L53	S45°05'54"E	9.90	L115	N45°00'00"E	9.90
L54	N44°58'08"E	9.90	L116	S44°53'29"E	9.90
L55	S45°05'54"E	9.90	L117	S45°00'31"E	9.90
L56	N44°58'08"E	9.90	L118	S44°54'08"E	9.90
L57	S45°05'54"E	9.90	L119	S45°00'31"E	9.90
L58	N44°58'08"E	9.90	L120	S44°54'08"E	9.90
L59	S45°05'54"E	9.90	L121	S45°00'31"E	9.90
L60	N44°58'08"E	9.90	L122	S44°54'08"E	9.90
L61	S45°05'54"E	9.90	L123	S45°22'31"E	9.90
L62	N37°47'06"E	9.90	L124	S44°54'08"E	9.90