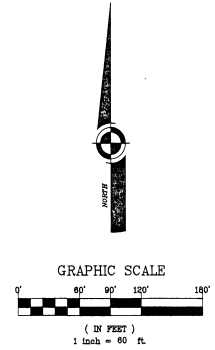
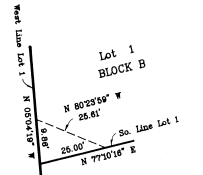
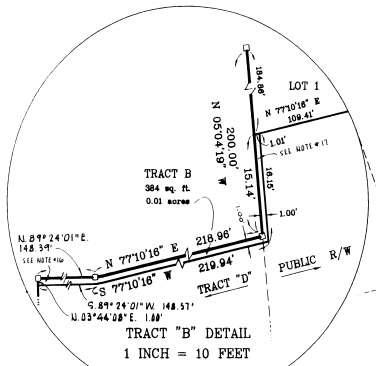


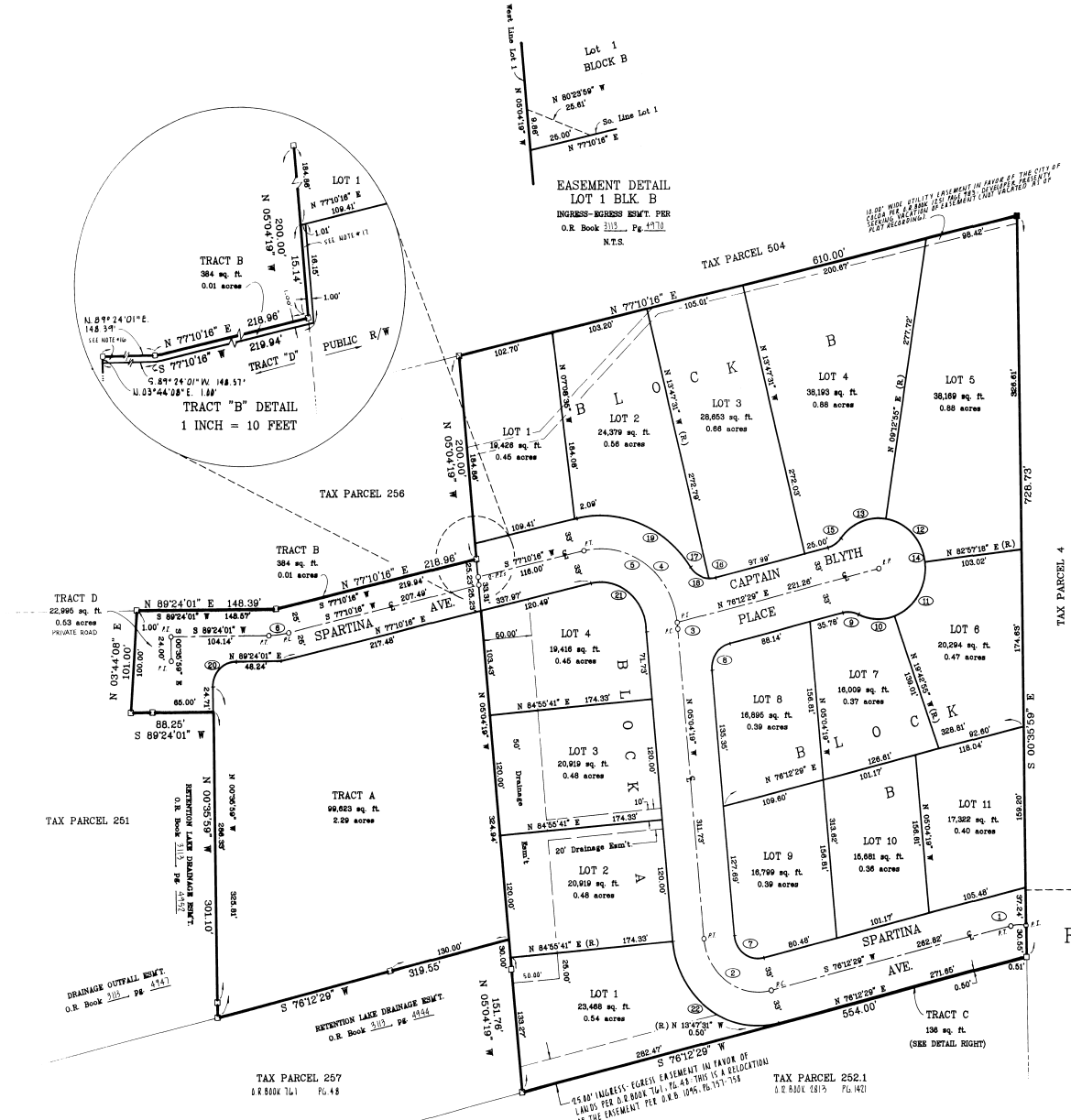
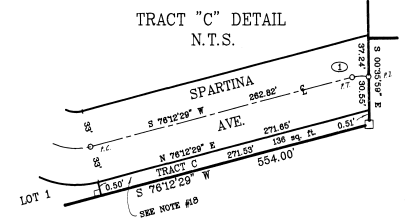
RIVER OAKS PLANTATION PHASE III

A parcel of land lying in Section 10, Township 24 South, Range 36 East, of Brevard County, Florida.

PLAT BOOK 37 PAGE 77
 SHEET 2 OF 2
 SECTION 10 TWP. 24S., RANGE 36E.



CURVE	RADIUS	DELTA	LENGTH	TANGENT	CHORD	BEARING
1	40.00	231°16'	16.28'	8.24'	16.13'	N 87°50'37\"
2	58.00	98°43'12\"	89.93'	67.57'	86.02'	N 84°25'55\"
3	81.40	50°42'59\"	110.9'	65.4'	109.22'	N 85°22'18\"
4	81.40	98°59'25\"	137.80'	92.00'	121.89'	N 64°20'01\"
5	81.40	97°40'25\"	138.89'	93.25'	122.65'	N 53°57'01\"
6	100.00	123°34'01\"	21.34'	10.71'	21.30'	S 85°17'09\"
7	25.00	98°43'12\"	43.07'	28.12'	39.94'	N 54°25'55\"
8	25.00	81°16'46\"	35.47'	21.46'	32.67'	N 38°34'05\"
9	25.00	38°24'51\"	17.17'	8.94'	16.83'	S 84°07'09\"
10	50.00	45°18'09\"	36.50'	20.85'	38.49'	S 67°04'51\"
11	50.00	77°14'29\"	57.48'	40.00'	62.48'	N 33°37'25\"
12	50.00	78°44'29\"	64.38'	37.50'	69.00'	N 43°44'53\"
13	50.00	82°21'11\"	84.41'	50.26'	81.77'	S 69°09'18\"
14	60.00	128°44'30\"	228.76'	142.99'	227.53'	S 19°47'51\"
15	25.00	39°20'46\"	17.17'	8.94'	16.83'	S 58°32'07\"
16	25.00	16°19'21\"	7.10'	3.57'	7.09'	S 84°20'59\"
17	25.00	143°19'21\"	23.62'	12.78'	23.73'	N 60°29'59\"
18	28.00	70°24'41\"	30.72'	17.64'	28.63'	N 68°30'09\"
19	114.40	69°26'65\"	138.67'	76.20'	130.34'	N 66°06'18\"
20	25.00	80°07'00\"	39.57'	25.00'	38.38'	N 44°24'01\"
21	48.40	97°42'25\"	82.59'	55.40'	72.83'	S 53°57'01\"
22	91.00	98°43'12\"	158.79'	108.02'	158.10'	S 64°20'55\"



RIVER OAKS PLANTATION
 PHASE I
 P.B.34, PG.14

SEE SHEET NO.1 OF 2 FOR
 DESCRIPTION & NOTES

Bussen-Mayer Engineering Group
 100 PARNELL STREET • MERRITT ISLAND, FLORIDA 32953
 PH. NO. (407) 453-0010