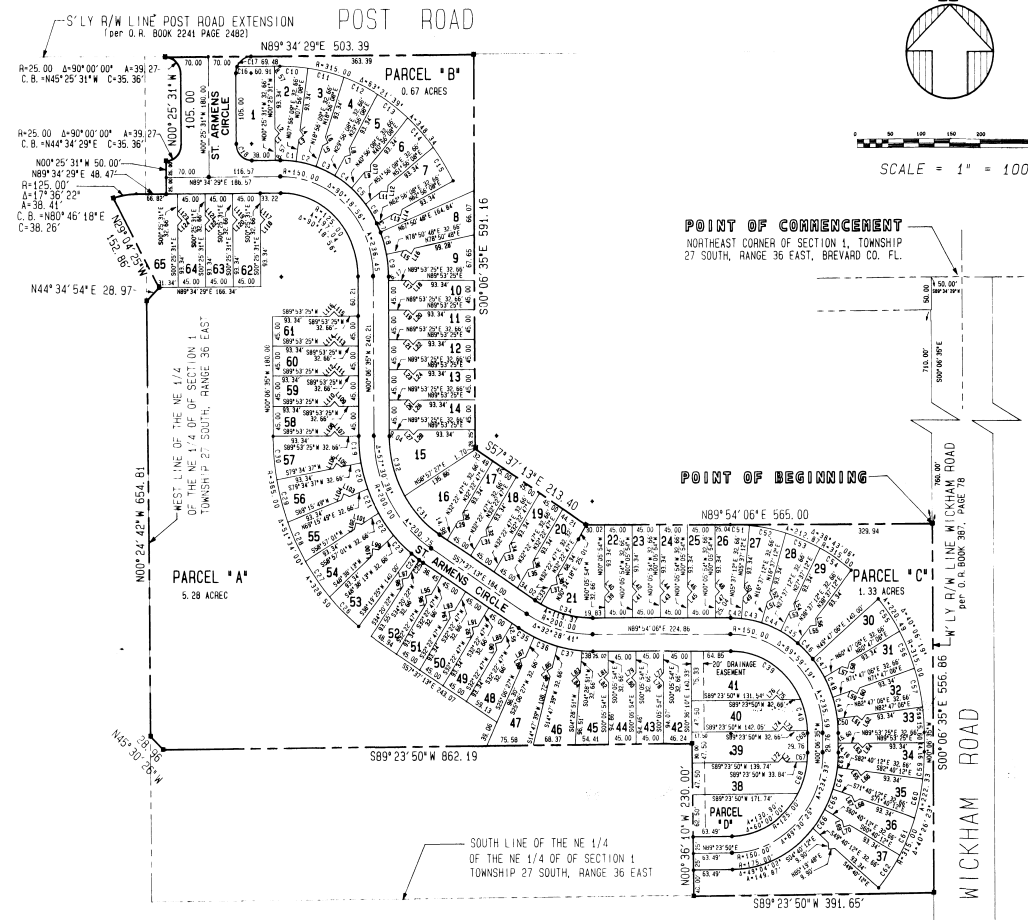


EAST BAY PLANTATION PHASE I

A ZERO LOT LINE SUBDIVISION SITUATED IN SEC. 1, TOWNSHIP 27 SOUTH, RANGE 36 EAST CITY OF MELBOURNE-BREVARD COUNTY, FLORIDA



Curve #	Radius	Delta	Length	Tangent	Chord/Bing
01	175.00	8°21'39"	25.54	12.79	25.51 886-14-41.3E
02	175.00	11°00'00"	33.60	16.80	33.59 576-33-51.7E
03	175.00	11°00'00"	33.60	16.80	33.59 543-33-51.7E
04	175.00	11°00'00"	33.60	16.80	33.59 554-33-51.7E
05	175.00	11°00'00"	33.60	16.80	33.59 576-33-51.7E
06	175.00	11°00'00"	33.60	16.80	33.59 598-33-51.7E
07	175.00	11°00'00"	33.60	16.80	33.59 620-33-51.7E
08	175.00	11°00'00"	33.60	16.80	33.59 642-33-51.7E
09	175.00	11°00'00"	33.60	16.80	33.59 664-33-51.7E
10	175.00	11°00'00"	33.60	16.80	33.59 686-33-51.7E
11	175.00	11°00'00"	33.60	16.80	33.59 708-33-51.7E
12	175.00	11°00'00"	33.60	16.80	33.59 730-33-51.7E
13	175.00	11°00'00"	33.60	16.80	33.59 752-33-51.7E
14	175.00	11°00'00"	33.60	16.80	33.59 774-33-51.7E
15	175.00	11°00'00"	33.60	16.80	33.59 796-33-51.7E
16	175.00	11°00'00"	33.60	16.80	33.59 818-33-51.7E
17	175.00	11°00'00"	33.60	16.80	33.59 840-33-51.7E
18	175.00	11°00'00"	33.60	16.80	33.59 862-33-51.7E
19	175.00	11°00'00"	33.60	16.80	33.59 884-33-51.7E
20	175.00	11°00'00"	33.60	16.80	33.59 906-33-51.7E
21	175.00	11°00'00"	33.60	16.80	33.59 928-33-51.7E
22	175.00	11°00'00"	33.60	16.80	33.59 950-33-51.7E
23	175.00	11°00'00"	33.60	16.80	33.59 972-33-51.7E
24	175.00	11°00'00"	33.60	16.80	33.59 994-33-51.7E
25	175.00	11°00'00"	33.60	16.80	33.59 1016-33-51.7E
26	175.00	11°00'00"	33.60	16.80	33.59 1038-33-51.7E
27	175.00	11°00'00"	33.60	16.80	33.59 1060-33-51.7E
28	175.00	11°00'00"	33.60	16.80	33.59 1082-33-51.7E
29	175.00	11°00'00"	33.60	16.80	33.59 1104-33-51.7E
30	175.00	11°00'00"	33.60	16.80	33.59 1126-33-51.7E
31	175.00	11°00'00"	33.60	16.80	33.59 1148-33-51.7E
32	175.00	11°00'00"	33.60	16.80	33.59 1170-33-51.7E
33	175.00	11°00'00"	33.60	16.80	33.59 1192-33-51.7E
34	175.00	11°00'00"	33.60	16.80	33.59 1214-33-51.7E
35	175.00	11°00'00"	33.60	16.80	33.59 1236-33-51.7E
36	175.00	11°00'00"	33.60	16.80	33.59 1258-33-51.7E
37	175.00	11°00'00"	33.60	16.80	33.59 1280-33-51.7E
38	175.00	11°00'00"	33.60	16.80	33.59 1302-33-51.7E
39	175.00	11°00'00"	33.60	16.80	33.59 1324-33-51.7E
40	175.00	11°00'00"	33.60	16.80	33.59 1346-33-51.7E
41	175.00	11°00'00"	33.60	16.80	33.59 1368-33-51.7E
42	175.00	11°00'00"	33.60	16.80	33.59 1390-33-51.7E
43	175.00	11°00'00"	33.60	16.80	33.59 1412-33-51.7E
44	175.00	11°00'00"	33.60	16.80	33.59 1434-33-51.7E
45	175.00	11°00'00"	33.60	16.80	33.59 1456-33-51.7E
46	175.00	11°00'00"	33.60	16.80	33.59 1478-33-51.7E
47	175.00	11°00'00"	33.60	16.80	33.59 1500-33-51.7E
48	175.00	11°00'00"	33.60	16.80	33.59 1522-33-51.7E
49	175.00	11°00'00"	33.60	16.80	33.59 1544-33-51.7E
50	175.00	11°00'00"	33.60	16.80	33.59 1566-33-51.7E
51	175.00	11°00'00"	33.60	16.80	33.59 1588-33-51.7E
52	175.00	11°00'00"	33.60	16.80	33.59 1610-33-51.7E
53	175.00	11°00'00"	33.60	16.80	33.59 1632-33-51.7E
54	175.00	11°00'00"	33.60	16.80	33.59 1654-33-51.7E
55	175.00	11°00'00"	33.60	16.80	33.59 1676-33-51.7E
56	175.00	11°00'00"	33.60	16.80	33.59 1698-33-51.7E
57	175.00	11°00'00"	33.60	16.80	33.59 1720-33-51.7E
58	175.00	11°00'00"	33.60	16.80	33.59 1742-33-51.7E
59	175.00	11°00'00"	33.60	16.80	33.59 1764-33-51.7E
60	175.00	11°00'00"	33.60	16.80	33.59 1786-33-51.7E
61	175.00	11°00'00"	33.60	16.80	33.59 1808-33-51.7E
62	175.00	11°00'00"	33.60	16.80	33.59 1830-33-51.7E
63	175.00	11°00'00"	33.60	16.80	33.59 1852-33-51.7E
64	175.00	11°00'00"	33.60	16.80	33.59 1874-33-51.7E
65	175.00	11°00'00"	33.60	16.80	33.59 1896-33-51.7E
66	175.00	11°00'00"	33.60	16.80	33.59 1918-33-51.7E
67	175.00	11°00'00"	33.60	16.80	33.59 1940-33-51.7E
68	175.00	11°00'00"	33.60	16.80	33.59 1962-33-51.7E
69	175.00	11°00'00"	33.60	16.80	33.59 1984-33-51.7E
70	175.00	11°00'00"	33.60	16.80	33.59 2006-33-51.7E
71	175.00	11°00'00"	33.60	16.80	33.59 2028-33-51.7E
72	175.00	11°00'00"	33.60	16.80	33.59 2050-33-51.7E
73	175.00	11°00'00"	33.60	16.80	33.59 2072-33-51.7E
74	175.00	11°00'00"	33.60	16.80	33.59 2094-33-51.7E
75	175.00	11°00'00"	33.60	16.80	33.59 2116-33-51.7E
76	175.00	11°00'00"	33.60	16.80	33.59 2138-33-51.7E
77	175.00	11°00'00"	33.60	16.80	33.59 2160-33-51.7E
78	175.00	11°00'00"	33.60	16.80	33.59 2182-33-51.7E
79	175.00	11°00'00"	33.60	16.80	33.59 2204-33-51.7E
80	175.00	11°00'00"	33.60	16.80	33.59 2226-33-51.7E
81	175.00	11°00'00"	33.60	16.80	33.59 2248-33-51.7E
82	175.00	11°00'00"	33.60	16.80	33.59 2270-33-51.7E
83	175.00	11°00'00"	33.60	16.80	33.59 2292-33-51.7E
84	175.00	11°00'00"	33.60	16.80	33.59 2314-33-51.7E
85	175.00	11°00'00"	33.60	16.80	33.59 2336-33-51.7E
86	175.00	11°00'00"	33.60	16.80	33.59 2358-33-51.7E
87	175.00	11°00'00"	33.60	16.80	33.59 2380-33-51.7E
88	175.00	11°00'00"	33.60	16.80	33.59 2402-33-51.7E
89	175.00	11°00'00"	33.60	16.80	33.59 2424-33-51.7E
90	175.00	11°00'00"	33.60	16.80	33.59 2446-33-51.7E
91	175.00	11°00'00"	33.60	16.80	33.59 2468-33-51.7E
92	175.00	11°00'00"	33.60	16.80	33.59 2490-33-51.7E
93	175.00	11°00'00"	33.60	16.80	33.59 2512-33-51.7E
94	175.00	11°00'00"	33.60	16.80	33.59 2534-33-51.7E
95	175.00	11°00'00"	33.60	16.80	33.59 2556-33-51.7E
96	175.00	11°00'00"	33.60	16.80	33.59 2578-33-51.7E
97	175.00	11°00'00"	33.60	16.80	33.59 2600-33-51.7E
98	175.00	11°00'00"	33.60	16.80	33.59 2622-33-51.7E
99	175.00	11°00'00"	33.60	16.80	33.59 2644-33-51.7E
100	175.00	11°00'00"	33.60	16.80	33.59 2666-33-51.7E

LINE #	BEARING	DISTANCE	LINE #	BEARING	DISTANCE
L1	N44°34'29"E	9.90	L83	S40°09'39"E	9.90
L2	N62°25'31"E	9.90	L84	N44°34'29"E	9.90
L3	N59°56'08"E	9.90	L85	S37°40'12"E	9.90
L4	N37°03'54"E	9.90	L86	N59°56'08"E	9.90
L5	N59°56'08"E	9.90	L87	S29°40'12"E	9.90
L6	N59°56'08"E	9.90	L88	N59°56'08"E	9.90
L7	N76°56'08"E	9.90	L89	S17°40'12"E	9.90
L8	N19°03'54"E	9.90	L90	N44°34'29"E	9.90
L9	N89°56'08"E	9.90	L91	N47°58'10"W	9.90
L10	N69°03'54"E	9.90	L92	N47°58'10"W	9.90
L11	S83°03'54"E	9.90	L93	N47°58'10"W	9.90
L12	N89°56'08"E	9.90	L94	N47°58'10"W	9.90
L13	N89°56'08"E	9.90	L95	N47°58'10"W	9.90
L14	S73°03'54"E	9.90	L96	N47°58'10"W	9.90
L15	S86°09'19"E	9.90	L97	S79°09'22"W	9.90
L16	N37°50'48"E	9.90	L98	N88°21'47"W	9.90
L17	N44°34'29"E	9.90	L99	N88°21'47"W	9.90
L18	N44°34'29"E	9.90	L100	S29°38'17"W	9.90
L19	N44°34'29"E	9.90	L101	N76°09'59"W	9.90
L20	N44°34'29"E	9.90	L102	S29°38'17"W	9.90
L21	N44°34'29"E	9.90	L103	N62°44'11"W	9.90
L22	N44°34'29"E	9.90	L104	S29°38'17"W	9.90
L23	N44°34'29"E	9.90	L105	N62°44'11"W	9.90
L24	N44°34'29"E	9.90	L106	S29°38'17"W	9.90
L25	N44°34'29"E	9.90	L107	N62°44'11"W	9.90
L26	N44°34'29"E	9.90	L108	S44°53'25"W	9.90
L27	N44°34'29"E	9.90	L109	N62°44'11"W	9.90
L28	N44°34'29"E	9.90	L110	S44°53'25"W	9.90
L29	N44°34'29"E	9.90	L111	N62°44'11"W	9.90
L30	N44°34'29"E	9.90	L112	S44°53'25"W	9.90
L31	N44°34'29"E	9.90	L113	N62°44'11"W	9.90
L32	N44°34'29"E	9.90	L114	S44°53'25"W	9.90
L33	N44°34'29"E	9.90	L115	N62°44'11"W	9.90
L34	N44°34'29"E	9.90	L116	S44°53'25"W	9.90
L35	N44°34'29"E	9.90	L117	N62°44'11"W	9.90
L36	N44°34'29"E	9.90	L118	S44°53'25"W	9.90
L37	N44°34'29"E	9.90	L119	N62°44'11"W	9.90
L38	N44°34'29"E	9.90	L120	S44°53'25"W	9.90
L39	N44°34'29"E	9.90	L121	N62°44'11"W	9.90
L40	N44°34'29"E	9.90	L122	S44°53'25"W	9.90
L41	S54°12'54"E	9.90	L123	S44°53'25"W	9.90
L42	N37°47'00"E	9.90	L124	S44°53'25"W	9.90