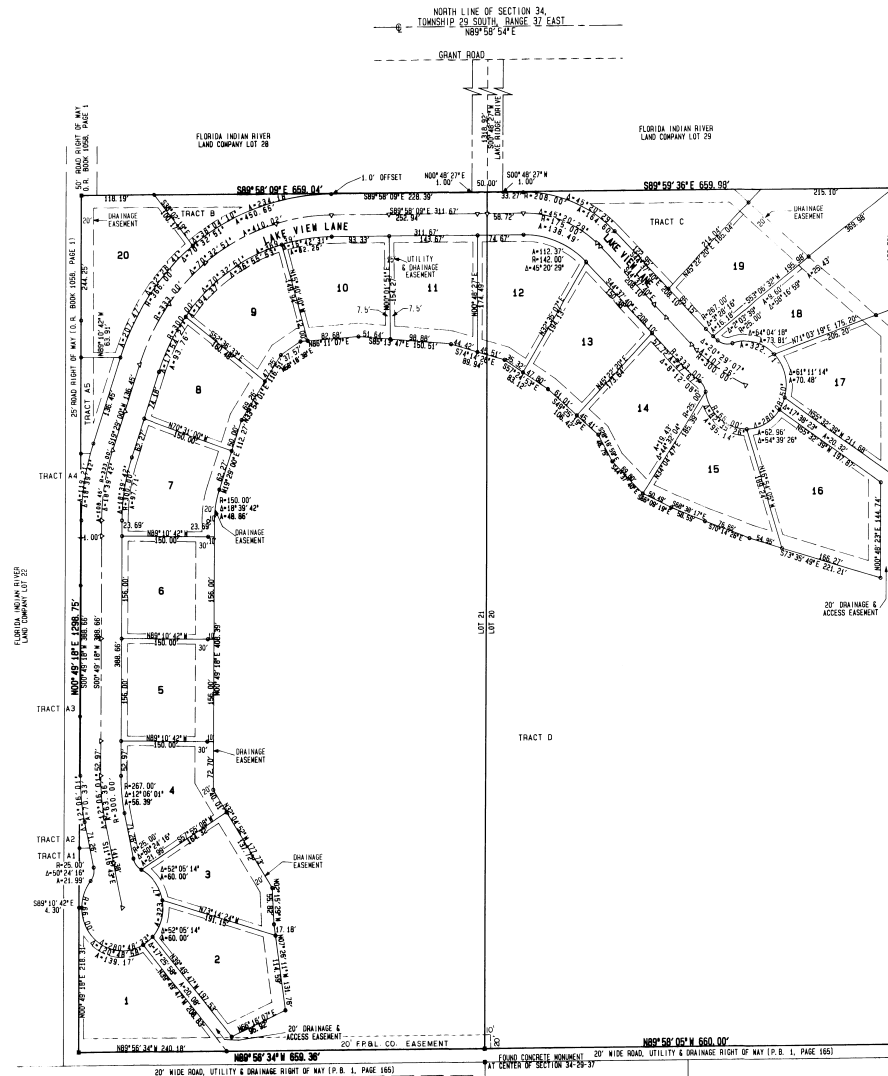


LAKE RIDGE

DESCRIPTION: A REPLAT OF Lots 20 and 21, FLORIDA INDIAN RIVER LAND COMPANY, according to the plat thereof, as recorded in Plat Book 1, Page 165, of the Public Records of Brevard County, Florida, Section 34, Township 29 South, Range 37 East.

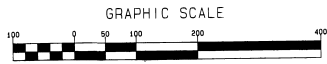


- NOTES:
- Bearings shown hereon are based on the North line of Section 34, Township 29 South, Range 37 East, being N 89° 58' 54" E.
 - There may be additional restrictions that are not recorded on this plat that may be found in the public records of this county.
 - Easements: A strip of land 10 feet wide along all front lot lines and a strip of land 7.5 feet wide along all side lot lines is reserved for a public utility easement. Rear drainage easements are as shown.
 - All utility easements shall also be easements for the construction, maintenance and operation of cable television services provided, however, that no such services shall interfere with the facilities of electric, gas, telephone, or other public utility. In the event that a cable vision company damages the facility of a public utility, it shall be solely responsible for the damages.
 - When more than one lot is used as a building site, the side easements will revert to the perimeter of said building site.
 - Additional restrictions may be found in the Property Owners Association documents recorded in Official Records Book 3103 Page 3710 of the Public Records of Brevard County.
 - Tracts C, and D shall be maintained by the Homeowners association.

Joiner in OR 3103 pg 3708

LEGEND:
 * Indicates Permanent Reference Monument (P.R.M.)
 A- Indicates Permanent Control Point (P.C.P.)

Prepared by:
 HUGH J. SMITH LAND SURVEYING, INC.
 1400 Palm Bay Road, N.E.
 Palm Bay, Florida



DEDICATION
 KNOW ALL MEN BY THESE PRESENTS, that the Corporation, hereinafter described, being the owner in fee simple of the lands described below, hereby dedicates and dedicates all roads, streets, alleys, thoroughfares, park, canal, drainage easements, utility easements, lakes, pathways, open spaces and other rights of way, easements shown hereon for the perpetual use of the public, and
 IN WITNESS WHEREOF, I have caused these presents to be signed and attested to by the officers named below and its corporate seal to be affixed hereon JANUARY 4, 1991
 By: Ken Penne President
 Attest: Aleene Penne

Signed and sealed in the presence of Barbara J. Strick Notary Public, P.O. Box 87, Palm Bay, FL 32906
 STATE OF FLORIDA COUNTY OF BREVARD
 THIS IS TO CERTIFY that on JANUARY 4, 1991 before me, an officer duly authorized to take acknowledgments in the State and County aforesaid, personally appeared ROY PENNE and ALEENE PENNE respectively, President and SECRETARY of the above named corporation incorporated under the laws of the State of FLORIDA, to me known to be the individuals and officers described in and who executed the foregoing Dedication and severally acknowledged the execution thereof to be their free act and deed as such officers thereto duly authorized; that the official seal of said corporation is duly affixed thereto; and that the said Dedication is the act and deed of said corporation.
 IN WITNESS WHEREOF, I have hereto set my hand and seal on the above date.
Dona J. Jancovic
 NOTARY PUBLIC
 My Commission Expires Sept 24, 1992 SEAL

CERTIFICATE OF SURVEYOR
 KNOW ALL MEN BY THESE PRESENTS, that I, the undersigned, being a licensed and registered land surveyor, does hereby certify that on MAY 17, 1990 I completed the survey of the lands as shown in the foregoing plat; that said plat is a correct representation of the lands therein described and planned; that permanent reference monuments have been placed as shown thereon as required by Chapters 177 & 472 Florida Statutes; and that said land is located in Brevard County, Florida. Dated JANUARY 4, 1991
Robert C. Smith Registration No. 4457
 ROBERT C. SMITH

CERTIFICATE OF APPROVAL BY MUNICIPALITY
 THIS IS TO CERTIFY, That on _____ the _____ approved the foregoing plat.
 SEAL
 ATTEST: _____ MAYOR
 _____ CITY CLERK.

CERTIFICATE OF ACCEPTANCE OF DEDICATION BY BOARD OF COUNTY COMMISSIONERS
 THIS IS TO CERTIFY That the Board of County Commissioners hereby accept all roads, streets, alleys, thoroughfares, park, canal, drainage easements, utility easements, lakes, pathways, open spaces, and other rights of way, easements and other dedications for public use on this plat.
Sue Schmitt Chairman of the Board
Lee Winstead, Jr. Clerk of the Board
By J. Steburg, DC

CERTIFICATE OF APPROVAL BY BOARD OF COUNTY COMMISSIONERS
 THIS IS TO CERTIFY, That on JANUARY 6, 1991 the foregoing plat was approved by the Board of County Commissioners of Brevard County, Florida.
Sue Schmitt Chairman of the Board
Lee Winstead, Jr. Clerk of the Board
 Approved _____ County Engineer

CERTIFICATE OF APPROVAL BY PLANNING AND ZONING COMMISSION
 THIS IS TO CERTIFY, That on JANUARY 7, 1991 the Zoning Commission of the above County approved the foregoing plat.
Shirley J. Jern
 Planning and Zoning Director

CERTIFICATE OF CLERK
 I HEREBY CERTIFY, That I have examined the foregoing plat and find that it complies in form with all the provisions of the Florida Statutes, and was filed for record on JAN 17, 1991 File No. 945
R.C. Winstead, Jr.
 Clerk of the Circuit Court
 in and for Brevard County, Fla.

See affidavit in ORB 3106 pg 1658 correcting error on Plat. Providing information for access road should read ORB 1058 pg 11, not ORB 1058 pg 11.