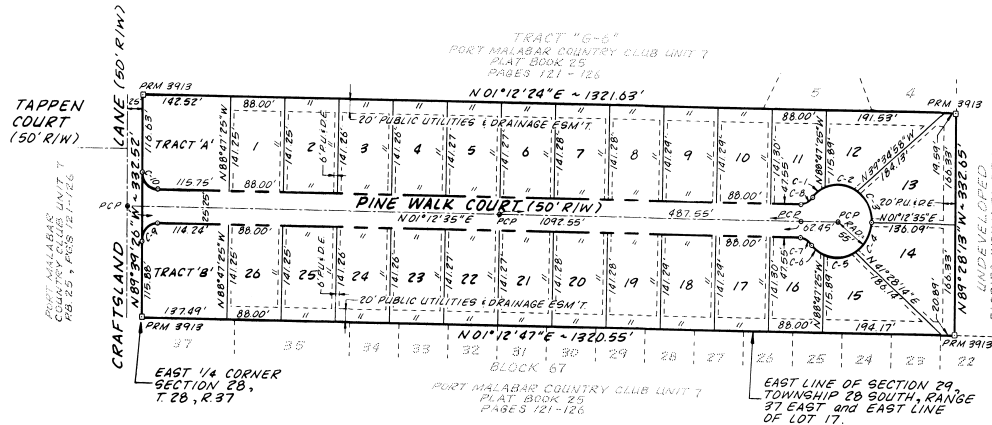
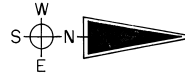
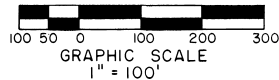


PINE WALK MANOR

CITY OF PALM BAY, FLORIDA

A RESUBDIVISION OF A PORTION OF LOT 17, FLORIDA INDIAN RIVER LAND COMPANY SUBDIVISION OF SECTION 29, TOWNSHIP 28, RANGE 37, BREVARD COUNTY, FLORIDA.



LEGAL DESCRIPTION:
THE EAST ONE-HALF OF LOT 17, FLORIDA INDIAN RIVER LAND COMPANY SUBDIVISION OF SECTION 29, TOWNSHIP 28 SOUTH, RANGE 37 EAST AS RECORDED IN PLAT BOOK 1, PAGE 164 OF THE PUBLIC RECORDS OF BREVARD COUNTY, FLORIDA.

CURVE TABLES:

#	RAD	DELTA	LENGTH
1	55.00'	027°44'23"	26.63'
2	55.00'	056°47'21"	54.51'
3	55.00'	056°47'20"	54.51'
4	55.00'	056°47'20"	54.51'
5	55.00'	056°47'21"	54.51'
6	95.00'	027°44'23"	26.63'
7	25.00'	051°19'04"	22.34'
8	25.00'	051°19'04"	22.34'
9	25.00'	080°52'01"	34.95'
10	25.00'	089°07'54"	38.89'

LEGEND:
 (O) PCP (PERMANENT CONTROL POINT)
 (M) PRM (PERMANENT REFERENCE MARKER)

SEE OFFICIAL RECORD BOOK PAGE 117 FOR JOINERS IN DEDICATION.

NOTES:
THERE MAY BE ADDITIONAL RESTRICTIONS NOT NOTED ON THIS PLAT WHICH MAY BE FOUND IN THE PUBLIC RECORDS OF BREVARD COUNTY, FLORIDA.

CONVENANTS AND RESTRICTIONS ARE RECORDED IN OFFICIAL RECORD BOOK AT PAGE OF THE PUBLIC RECORDS OF BREVARD COUNTY, FLORIDA.

SEE OFFICIAL RECORD BOOK PAGE FOR VACATION AND ABANDONMENT OF UNDERLYING FLORIDA INDIAN RIVER LAND COMPANY SUBDIVISION AND ASSOCIATED ROADS AND EASEMENTS.

THE HOMEOWNERS ASSOCIATION SHALL BE RESPONSIBLE FOR THE MAINTENANCE OF DRAINAGE SYSTEM.

EASEMENTS:

A STRIP OF LAND 20' WIDE AT THE REAR OF ALL LOTS, AND 6' WIDE AT THE SIDES OF EACH LOT IS HEREBY RESERVED FOR THE INSTALLATION AND MAINTENANCE OF PUBLIC UTILITIES AND DRAINAGE FACILITIES AND CABLE TELEVISION SERVICES.

A STRIP OF LAND 10' WIDE AT THE FRONT OF ALL LOTS IS HEREBY RESERVED FOR PUBLIC UTILITIES.

SPECIAL FLOOD ZONE NOTE:

ALL LOTS SHOWN HEREON ARE WITHIN FLOOD ZONE "X" AS DESIGNATED ON THAT CERTAIN MAP TITLED "FIRM FLOOD INSURANCE RATE MAP", BREVARD COUNTY, FLORIDA AND INCORPORATED AREAS" PANEL 520 OF 727, MAP NO. 12009 C 0520E, EFFECTIVE DATE APRIL 3, 1989, ISSUED BY "FEDERAL EMERGENCY MANAGEMENT AGENCY."

DEDICATION

KNOW ALL MEN BY THESE PRESENTS, That the Corporation named below, being the owner in fee simple of the lands described in

PINE WALK MANOR

hereby dedicates said lands and plat for the uses and purposes therein expressed and dedicates all roads, streets, alleys, thoroughfares, parks, canals, drainage easements, utility easements, lakes, pathways, open spaces and other rights of way, easements shown hereon to the perpetual use of the public, and

IN WITNESS WHEREOF, has caused these presents to be signed and attested to by the officers named below and its corporate seal to be affixed hereto on

By Blue Walk Manor Development, Inc. President

Signed and sealed in the presence of

STATE OF FLORIDA COUNTY OF BREVARD
 THIS IS TO CERTIFY, That on MAY 15, 1990 before me, an officer duly authorized to take acknowledgments in the State and County aforesaid, personally appeared Edward N. Welch and David L. Smith respectively, President and Vice President of the above named corporation incorporated under the laws of the State of Florida, to me known to be the individuals and officers described in and who executed the foregoing Dedication and severally acknowledged the execution thereof to be their free act and deed as such officers thereunto duly authorized, that the official seal of said corporation is duly affixed thereto; and that the said Dedication is the act and deed of said corporation.

IN WITNESS WHEREOF, I have hereto set my hand and seal on the above date.

Notary Public
 My Commission Expires March 6, 1994

CERTIFICATE OF SURVEYOR
 I, William A. Lane, a duly licensed and registered land surveyor, do hereby certify that on June 2, 1988 he completed the survey of the lands as shown in the foregoing plat; that said plat is a correct representation of the lands therein described and platted; that permanent reference monuments have been placed as shown thereon and required by Chapters 177 & 472 Florida Statutes; and that said plat is located in Brevard County, Florida. Dated 10-3-88
William A. Lane Registration No. 3013

CERTIFICATE OF APPROVAL BY MUNICIPALITY
 THIS IS TO CERTIFY, That on July 20, 1989 the CITY OF PALM BAY, FLORIDA approved the foregoing plat.
 Attest: Alvin Ross Mayor
Alvin Ross City Clerk

CERTIFICATE OF ACCEPTANCE OF DEDICATION BY BOARD OF COUNTY COMMISSIONERS
 THIS IS TO CERTIFY That the Board of County Commissioners hereby accepts all roads, streets, alleys, thoroughfares, parks, canals, drainage easements, utility easements, lakes, pathways, open spaces and other rights of way, easements and areas dedicated for public use on this plat.
 Attest: _____ Chairman of the Board
 _____ Clerk of the Board

CERTIFICATE OF APPROVAL BY BOARD OF COUNTY COMMISSIONERS
 THIS IS TO CERTIFY, That on _____ the foregoing plat was approved by the Board of County Commissioners of Brevard County, Florida.
 Attest: _____ Chairman of the Board
 _____ Clerk of the Board
 _____ Approved _____ County Engineer

CERTIFICATE OF APPROVAL BY PLANNING AND ZONING COMMISSION
 THIS IS TO CERTIFY, That on May 2, 1990 the Zoning Commission of the above City approved the foregoing plat.
William A. Lane Planning and Zoning Director

CERTIFICATE OF CLERK
 I HEREBY CERTIFY, That I have examined the foregoing plat and find that it complies in form with all the requirements of Chapter 177, Florida Statutes, and was filed for record on 3/11/90 at 3:11 PM File No. 871606 or R.C. Winkler Clerk of the Circuit Court in and for Brevard County, Fla.

SOUTHERN ENGINEERING CONSULTANTS, INC.
 1333 GATEWAY DRIVE, SUITE 1028
 MELBOURNE, FLORIDA 32904

WILLIAM A. LANE
 PROFESSIONAL LAND SURVEYOR
 140 BRY-LYNN DRIVE and
 7320 SHERIDAN ROAD
 WEST MELBOURNE, FLORIDA 32904
 (407) 724-2723