

DRAWING NUMBER
36-74

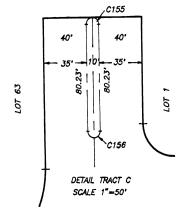
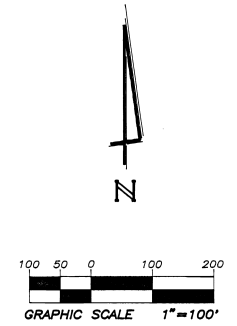
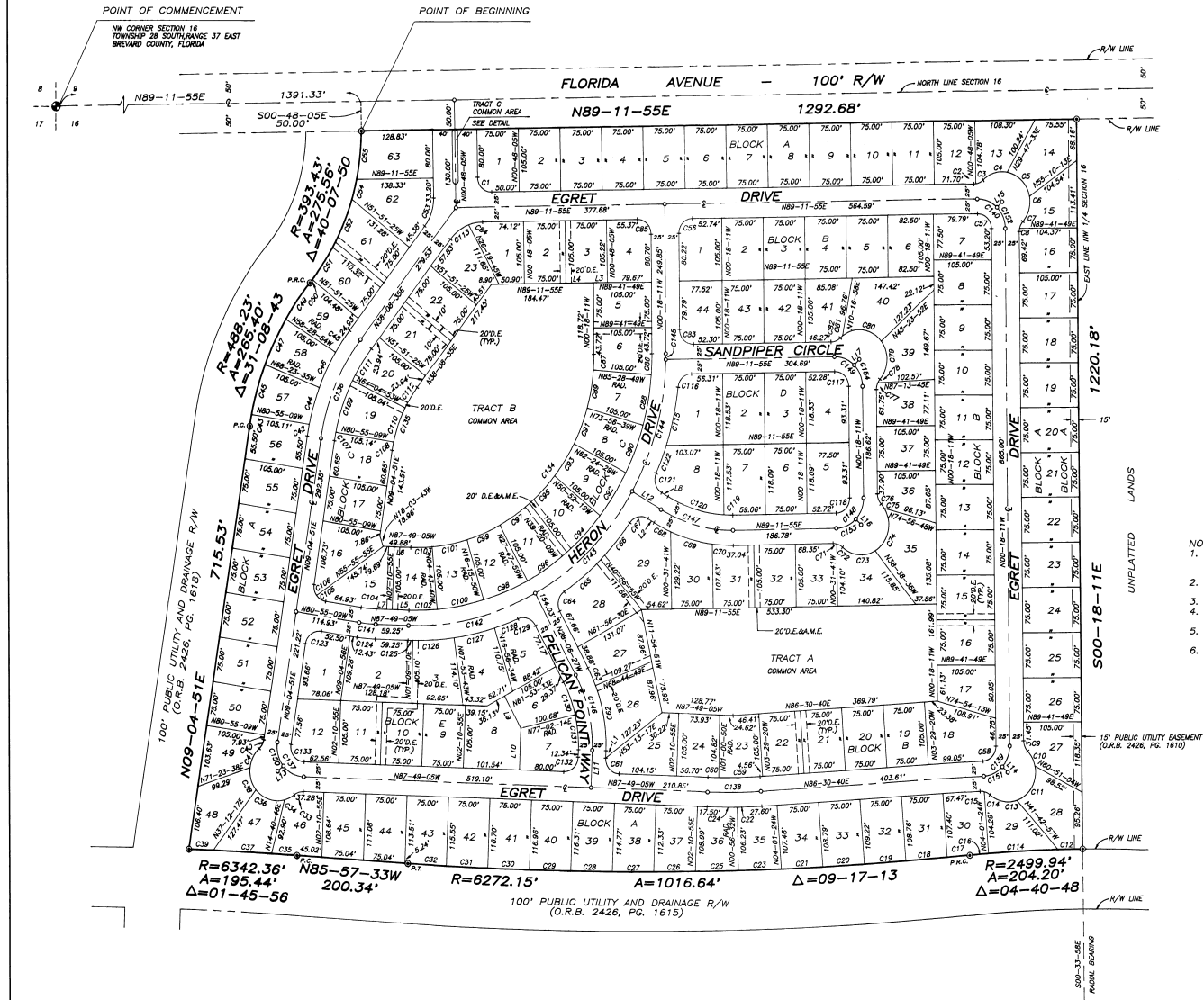
DRAWING NUMBER

DRAWING NUMBER

DRAWING NUMBER

FEATHER LAKES

A SUBDIVISION SITUATED IN THE NORTHWEST QUARTER OF SECTION 16,
TOWNSHIP 28 SOUTH, RANGE 37 EAST, BREVARD COUNTY, FLORIDA.
CITY OF MELBOURNE DECEMBER, 1989



- NOTES:
- SEE SHEET 1 OF 3 FOR SURVEYORS NOTES, EASEMENT NOTES AND GENERAL NOTES.
 - SEE SHEET 3 OF 3 FOR CURVE DATA AND LINE DATA TABLES.
 - D.E. DENOTES DRAINAGE EASEMENT.
 - A.M.E. DENOTES ACCESS AND MAINTENANCE EASEMENT.
 - ⊙ DENOTES PERMANENT REFERENCE MONUMENT.
 - ⊙ DENOTES PERMANENT CONTROL POINT.

DRAWN BY: D.S. LARSEN
CHECKED BY: C.M. ROSSER



Daniel Co. Associates
Land Surveyors, Inc.
325 Fifth Avenue, Suite 202
Indianton, Florida 32903 (407) 724-8333