

# MISTY WAY, PHASE ONE, P.U.D.

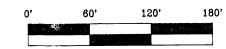
PLAT BOOK 26 PAGE 26  
 SHEET 2 OF 2  
 SECTION 7 TWP. 27 S., RANGE 37 E.

CURVE DATA			
NO.	RADIUS	DELTA	ARC
1	25.00'	88°57'35"	38.82'
2	130.00'	09°04'44"	20.58'
3	130.00'	18°29'35"	41.85'
4	25.00'	57°25'22"	25.06'
5	50.00'	01°15'00"	1.09'
6	50.00'	22°30'00"	19.64'
7	50.00'	22°30'00"	19.64'
8	50.00'	22°30'00"	19.64'
9	50.00'	22°30'00"	19.64'
10	50.00'	22°30'00"	19.64'
11	50.00'	22°30'00"	19.64'
12	50.00'	43°45'00"	38.18'
13	25.00'	20°57'21"	9.14'
14	25.00'	101°37'17"	44.34'
15	485.00'	02°50'29"	19.82'
16	485.00'	04°15'00"	35.98'
17	485.00'	04°15'00"	35.98'
18	485.00'	04°15'00"	35.98'
19	485.00'	04°15'00"	35.98'
20	485.00'	04°15'00"	35.98'
21	485.00'	04°15'00"	35.98'
22	485.00'	04°15'00"	35.98'
23	485.00'	04°15'00"	35.98'
24	485.00'	04°15'00"	35.98'
25	485.00'	05°55'02"	50.09'
26	600.00'	06°03'06"	63.37'
27	600.00'	04°15'00"	44.51'
28	600.00'	01°48'06"	18.87'
29	600.00'	01°29'19"	15.59'
30	600.00'	04°15'00"	44.51'
31	600.00'	04°15'00"	44.51'
32	600.00'	04°15'00"	44.51'
33	600.00'	04°15'00"	44.51'
34	600.00'	04°15'00"	44.51'
35	600.00'	02°50'29"	24.52'

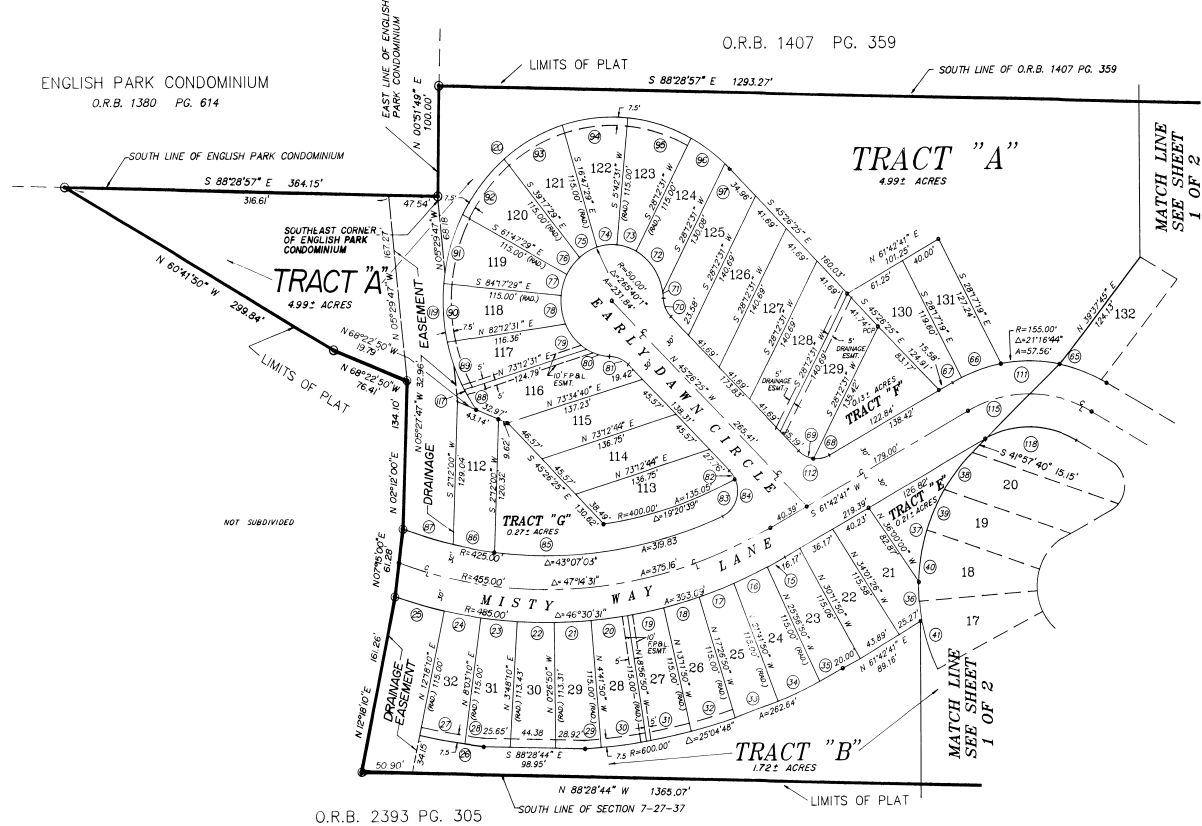
CURVE DATA			
NO.	RADIUS	DELTA	ARC
36	165.00'	12°30'26"	36.02'
37	165.00'	45°54'08"	130.75'
38	165.00'	14°58'22"	43.12'
39	165.00'	14°01'44"	40.40'
40	165.00'	22°30'00"	64.80'
41	165.00'	22°30'00"	64.80'
42	165.00'	22°30'00"	64.80'
43	165.00'	20°49'03"	59.95'
44	165.00'	09°56'31"	28.63'
45	165.00'	01°15'00"	3.60'
46	25.00'	91°02'21"	39.72'
47	25.00'	99°45'41"	43.53'
48	25.00'	09°04'27"	3.96'
49	25.00'	42°30'00"	18.69'
50	50.00'	39°14'17"	34.53'
51	50.00'	51°35'22"	45.02'
52	50.00'	22°30'00"	19.63'
53	50.00'	22°30'00"	19.64'
54	50.00'	22°30'00"	19.63'
55	50.00'	22°30'00"	19.63'
56	50.00'	22°30'00"	19.63'
57	50.00'	24°38'01"	21.06'
58	50.00'	37°52'37"	33.05'
59	25.00'	27°21'32"	11.94'
60	25.00'	15°28'28"	6.75'
61	25.00'	71°10'02"	31.05'
62	70.00'	22°25'34"	27.40'
63	70.00'	05°50'55"	6.27'
64	155.00'	02°12'14"	5.96'
65	155.00'	15°49'21"	42.80'
66	155.00'	15°05'49"	40.84'
67	155.00'	03°46'04"	8.84'
68	25.00'	35°46'36"	15.87'
69	25.00'	37°04'41"	16.18'
70	25.00'	42°50'00"	18.69'

CURVE DATA			
NO.	RADIUS	DELTA	ARC
71	50.00'	06°02'40"	5.26'
72	50.00'	53°00'16"	46.37'
73	50.00'	22°30'00"	19.64'
74	50.00'	22°30'00"	19.64'
75	50.00'	22°30'00"	19.64'
76	50.00'	22°30'00"	19.64'
77	50.00'	22°30'00"	19.64'
78	50.00'	29°30'22"	25.75'
79	50.00'	35°49'28"	31.26'
80	50.00'	26°39'08"	25.00'
81	25.00'	42°50'00"	18.69'
82	25.00'	20°19'27"	8.67'
83	25.00'	91°47'27"	40.05'
84	25.00'	112°06'51"	48.92'
85	425.00'	30°17'25"	227.76'
86	425.00'	05°32'21"	41.09'
87	425.00'	06°57'11"	51.59'
88	165.00'	07°30'50"	21.65'
89	165.00'	16°05'44"	46.35'
90	165.00'	18°17'35"	52.68'
91	165.00'	22°30'00"	64.80'
92	165.00'	22°30'00"	64.80'
93	165.00'	22°30'00"	64.80'
94	165.00'	22°30'00"	64.80'
95	165.00'	22°30'00"	64.80'
96	165.00'	14°01'50"	40.41'
97	165.00'	27°19'15"	6.68'
98	165.00'	21°00'09"	60.48'
99	165.00'	22°30'00"	64.80'
100	165.00'	22°30'00"	64.80'
101	165.00'	12°47'20"	36.83'
102	165.00'	22°30'00"	64.80'
103	165.00'	22°30'00"	64.80'
104	165.00'	14°00'24"	40.34'
105	165.00'	14°26'12"	41.67'

CURVE DATA			
NO.	RADIUS	DELTA	ARC
106	165.00'	17°06'44"	49.38'
107	165.00'	00°52'30"	2.52'
108	25.00'	108°49'58"	47.49'
109	25.00'	42°50'00"	18.69'
110	70.00'	27°33'29"	33.67'
111	155.00'	57°40'12"	156.01'
112	25.00'	72°50'44"	31.79'
113	25.00'	122°34'38"	53.48'
114	130.00'	27°33'29"	62.53'
115	125.00'	57°40'12"	128.82'
116	100.00'	27°33'29"	46.10'
117	165.00'	15°51'30"	45.67'
118	35.00'	57°40'12"	95.62'
119	165.00'	29°40'15"	85.45'
120	165.00'	125°13'15"	360.61'



SCALE - 1"=60'



### LEGEND

- ⊙ INDICATES PRM LABELED P.L.S. 4262
- INDICATES PCP

**ALLEN** Engineering, Inc.  
 ENGINEERS - SURVEYORS  
 106 DIXIE LANE (P.O. BOX 1321)  
 COCOA BEACH, FLORIDA 32931  
 305/783-7443

# 840090