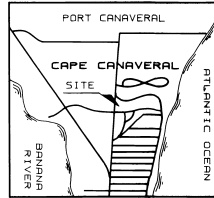


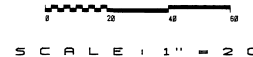
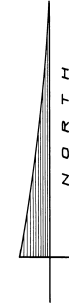
GIZELLA TOWNHOMES PHASE FOUR

SECTION 14, TOWNSHIP 24 SOUTH, RANGE 37 EAST
CITY OF CAPE CANAVERAL, FLORIDA



VICINITY MAP (N.T.S.)

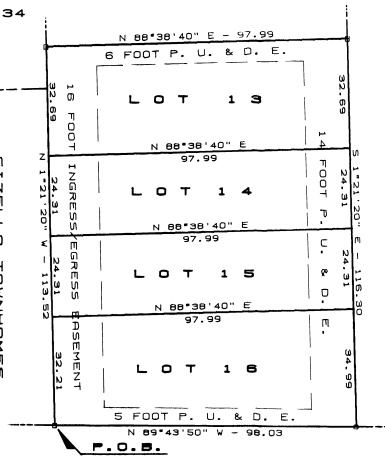
LEGAL DESCRIPTION
BEGIN AT THE SOUTHEAST CORNER OF LOT 1, GIZELLA TOWNHOMES PHASE ONE AS RECORDED IN PLAT BOOK 33, PAGE 95 OF THE PUBLIC RECORDS OF BREVARD COUNTY, FLORIDA, THENCE N 01° 21' 20" W, ALONG THE EAST LINE OF SAID PLAT, A DISTANCE OF 113.52 FEET TO THE SOUTH LINE OF GIZELLA TOWNHOMES PHASE III, THENCE N 88° 38' 40" E, ALONG SAID LINE, A DISTANCE OF 97.99 FEET, S 01° 21' 20" E, A DISTANCE OF 116.30 FEET, THENCE N 89° 43' 50" W, A DISTANCE OF 98.03 FEET TO THE POINT-OF-BEGINNING,
CONTAINING 0.26 ACRES, MORE OR LESS.



SCALE: 1" = 20'

GIZELLA TOWNHOMES PHASE II PLAT BOOK 34 PAGE 86
GIZELLA TOWNHOMES PHASE III PLAT BOOK 35 PAGE 74

GIZELLA TOWNHOMES PHASE ONE PLAT BOOK 33 PAGE 95



NOT PLATTED

DEED BOOK 395 PAGE 478

- SURVEYOR'S NOTES**
- INDICATES PERMANENT REFERENCE MONUMENT.
 - BEARINGS DEPICTED HEREON REFER TO GIZELLA TOWNHOMES PHASE III, PLAT BOOK 35, PAGE 74.
 - EASEMENTS AS SHOWN BY DASHED LINES ARE RESERVED FOR MAINTENANCE AND/OR INSTALLATION OF PUBLIC UTILITIES.
 - THERE MAY BE ADDITIONAL RESTRICTIONS THAT ARE NOT RECORDED ON THE PLAT THAT MAY BE FOUND IN THE PUBLIC RECORDS OF BREVARD COUNTY, FLORIDA, AND SHALL ALSO BE EASEMENTS FOR THE CONSTRUCTION, INSTALLATION, OPERATION AND MAINTENANCE OF CABLE TELEVISION SERVICE.

FOR JOINDER SEE O.R. MEM
FOR RESTRICTIONS SEE O.R. 2337 pg 1586

BEACH MAPPING AND SURVEYING
707 HULLING AND SURVEYING
CAPE CANAVERAL, FLORIDA 32920

DEDICATION

KNOW ALL MEN BY THESE PRESENTS, That the Corporation named below, being the owner in fee simple of the lands described in

GIZELLA TOWNHOMES PHASE FOUR
hereby dedicates said lands and plat for the uses and purposes therein expressed and dedicates all roads, streets, alleys, thoroughfares, parks, canals, drainage easements, utility easements, lakes, pathways, open spaces and other rights of way, easements shown hereon to the perpetual use of the public, and
IN WITNESS WHEREOF, has caused these presents to be signed and attested to by the officers named below and its corporate seal to be affixed hereto on

By William Bennix President
Attest: William Bennix Secretary

Signed and sealed in the presence of Joseph R. Sutter

STATE OF FLORIDA COUNTY OF BREVARD
THIS IS TO CERTIFY, That on May 18, 1989
before me, an officer duly authorized to take acknowledgments in the State and County aforesaid, personally appeared William Bennix
and
respectively William Bennix President and
of the above named corporation incorporated under the laws of the State of FLORIDA to me known to be the individuals and officers described in and who executed the foregoing Dedication and severally acknowledged the execution thereof to be their free act and deed as such officers thereunto duly authorized; that the official seal of said corporation is duly affixed thereto; and that the said Dedication is the act and deed of said corporation.

IN WITNESS WHEREOF, I have hereto set my hand and seal on the above date.
Joseph R. Sutter
NOTARY PUBLIC

My Commission Expires 07-01-89 SEAL

CERTIFICATE OF SURVEYOR
KNOW ALL MEN BY THESE PRESENTS, That the undersigned, being a licensed and registered land surveyor, does hereby certify that on MAY 18, 1989 he completed the survey of the lands as shown in the foregoing plat; that said plat is a correct representation of the lands therein described and platted; that permanent reference monuments have been placed as shown thereon as required by Chapters 177 & 472 Florida Statutes; and that said land is located in Brevard County, Florida. Dated 5-18-89
Edwin Mills
EDWIN MILLS P.L.L.C. Registration No. 3807

CERTIFICATE OF APPROVAL BY MUNICIPALITY
THIS IS TO CERTIFY, That on June 29, 1989 the Cape Canaveral City Council approved the foregoing plat.
Joy C. Salamone Mayor
Janet A. Luce City Clerk

CERTIFICATE OF ACCEPTANCE OF DEDICATION BY BOARD OF COUNTY COMMISSIONERS
THIS IS TO CERTIFY That the Board of County Commissioners hereby accept all roads, streets, alleys, thoroughfares, parks, canals, drainage easements, utility easements, lakes, pathways, open spaces and other rights of way, easements and areas dedicated for public use on this plat.
Chairman of the Board
ATTEST: Clerk of the Board

CERTIFICATE OF APPROVAL BY BOARD OF COUNTY COMMISSIONERS
THIS IS TO CERTIFY, That on the foregoing plat was approved by the Board of County Commissioners of Brevard County, Florida.
Chairman of the Board
ATTEST: Approved County Engineer

CERTIFICATE OF APPROVAL BY PLANNING AND ZONING COMMISSION
THIS IS TO CERTIFY, That on June 25, 1989 the Zoning Commission of the above approved the foregoing plat.
Planning and Zoning Director

CERTIFICATE OF CLERK
I HEREBY CERTIFY, That I have examined the foregoing plat and find that it complies in form with all the requirements of Chapter 177, Florida Statutes, and was filed for record on July 24, 1989 at 1:05 PM File No. 89-0000000000
R. C. Winters
Clerk of the Circuit Court, City of Sebring, Inc. and for Brevard County, Fla.