

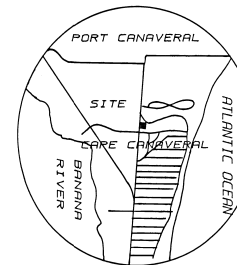
GIZELLA TOWNHOMES PHASE I II

SECTION 14, TOWNSHIP 24 SOUTH, RANGE 37 EAST

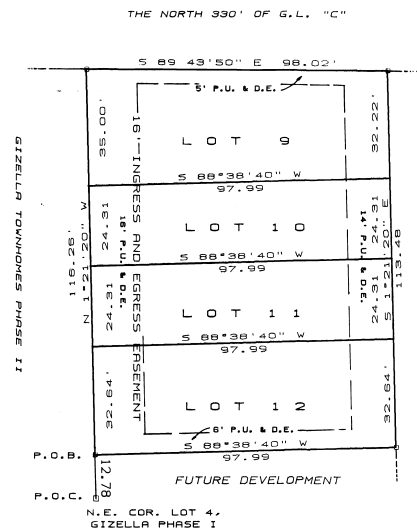
CITY OF CAPE CANAVERAL, FLORIDA

DESCRIPTION

COMMENCE AT THE NORTHEAST CORNER OF LOT 4, GIZELLA TOWNHOMES PHASE I AS RECORDED IN PLAT BOOK 33, PAGE 95, PUBLIC RECORDS OF BREVARD COUNTY, FLORIDA; THENCE N 1 21'20" W, A DISTANCE OF 12.78 FEET TO THE POINT-OF-BEGINNING; THENCE CONTINUE N 1 21'20" W, A DISTANCE OF 116.26 FEET; THENCE S 89 43'50" E, A DISTANCE OF 98.02 FEET; THENCE S 1 21'20" E, A DISTANCE OF 113.48 FEET; THENCE S 89 38'40" W, A DISTANCE OF 97.99 FEET TO THE POINT-OF-BEGINNING. CONTAINING 0.26 ACRES, MORE OR LESS.



N. T. S.



SURVEYOR'S NOTES :

1. 0 INDICATES PERMANENT REFERENCE MONUMENTS.
2. BEARINGS ASSUMED FOR CALCULATION PURPOSES.
3. EASEMENTS AS SHOWN BY DASHED LINES ARE RESERVED FOR MAINTENANCE AND/OR INSTALLATION OF PUBLIC UTILITIES.
4. THERE MAY BE ADDITIONAL RESTRICTIONS THAT ARE NOT RECORDED ON THE PLAT THAT MAY BE FOUND IN THE PUBLIC RECORDS OF BREVARD COUNTY, FLORIDA AND SHALL ALSO BE EASEMENTS FOR THE CONSTRUCTION, INSTALLATION, OPERATION AND MAINTENANCE OF CABLE TELEVISION SERVICE.

FOR JOINDER SEE O.R. _____ PG. _____
FOR RESTRICTIONS SEE O.R. 2891 PG. 1586

BEACH MAPPING AND SURVEYING
707 MULLETT DRIVE
SUITE 206
CAPE CANAVERAL, FLORIDA 32920
(407) 783-4174

DEDICATION

KNOW ALL MEN BY THESE PRESENTS, That the Corporation named below, being the owner in fee simple of the lands described in

GIZELLA TOWNHOMES PHASE III

hereby dedicates said lands and plat for the uses and purposes therein expressed and dedicates all roads, streets, alleys, thoroughfares, parks, canals, drainage easements, utility easements, lakes, pathways, open spaces and other rights of way, easements shown hereon to the perpetual use of the public, and

IN WITNESS WHEREOF, has caused these presents to be signed and attested to by the officers named below, and its corporate seal to be affixed hereto on September 9, 1988.

By William Bennix
President

Attest: William Bennix
President

Signed and sealed in the presence of Zella, Inc.
Janet S. Leman

STATE OF FLORIDA COUNTY OF BREVARD
THIS IS TO CERTIFY, That on September 9, 1988 before me, an officer duly authorized to take acknowledgments in the State and County aforesaid, personally appeared William Bennix and Janet S. Leman respectively, President and _____ of the above named corporation incorporated under the laws of the State of FLORIDA, to me known to be the individuals and officers described in and who executed the foregoing Dedication and severally acknowledged the execution thereof to be their free act and deed as such officers thereunto duly authorized; that the official seal of said corporation is duly affixed thereto, and that the said Dedication is the act and deed of said corporation.

IN WITNESS WHEREOF, I have hereto set my hand and seal on the above date.

Lucretia B. Hutchinson
NOTARY PUBLIC

My Commission Expires July 01, 1989

CERTIFICATE OF SURVEYOR

KNOW ALL MEN BY THESE PRESENTS, That the undersigned, being a licensed and registered land surveyor, does hereby certify, that on JULY 15, 1988 he completed the survey of the lands as shown in the foregoing plat; that said plat is a correct representation of the lands therein described and plotted; that permanent reference monuments have been placed as shown thereon as required by Chapters 177 & 472 Florida Statutes; and that said land is located in Brevard County, Florida. Dated JULY 15, 1988

Edwin Hill, P.L.S. Registration No. 3807

CERTIFICATE OF APPROVAL BY MUNICIPALITY

THIS IS TO CERTIFY, That on October 18, 1988 the Cape Canaveral City Council approved the foregoing plat.

Patrick Lee MAYOR
Janet S. Leman CITY CLERK

CERTIFICATE OF ACCEPTANCE OF DEDICATION BY BOARD OF COUNTY COMMISSIONERS

THIS IS TO CERTIFY That the Board of County Commissioners hereby accept all roads, streets, alleys, thoroughfares, parks, canals, drainage easements, utility easements, lakes, pathways, open spaces and other rights of way, easements and areas dedicated for public use on this plat.

Chairman of the Board _____
Clerk of the Board _____

CERTIFICATE OF APPROVAL BY BOARD OF COUNTY COMMISSIONERS

THIS IS TO CERTIFY, That on _____ the foregoing plat was approved by the Board of County Commissioners of Brevard County, Florida.

Chairman of the Board _____
Clerk of the Board _____

Approved _____
County Engineer

CERTIFICATE OF APPROVAL BY PLANNING AND ZONING COMMISSION

THIS IS TO CERTIFY, That on September 14, 1988 the Zoning Commission of the above _____ approved the foregoing plat.

R. A. Russell
Planning and Zoning Director

CERTIFICATE OF CLERK

I HEREBY CERTIFY, That I have examined the foregoing plat and find that it complies in form with all the requirements of Chapter 177, Florida Statutes, and was filed for record on March 21, 1989 at 11:30 AM File No. 64072

R. C. Winters
Clerk of the Circuit Court
in and for Brevard County, Fla.