

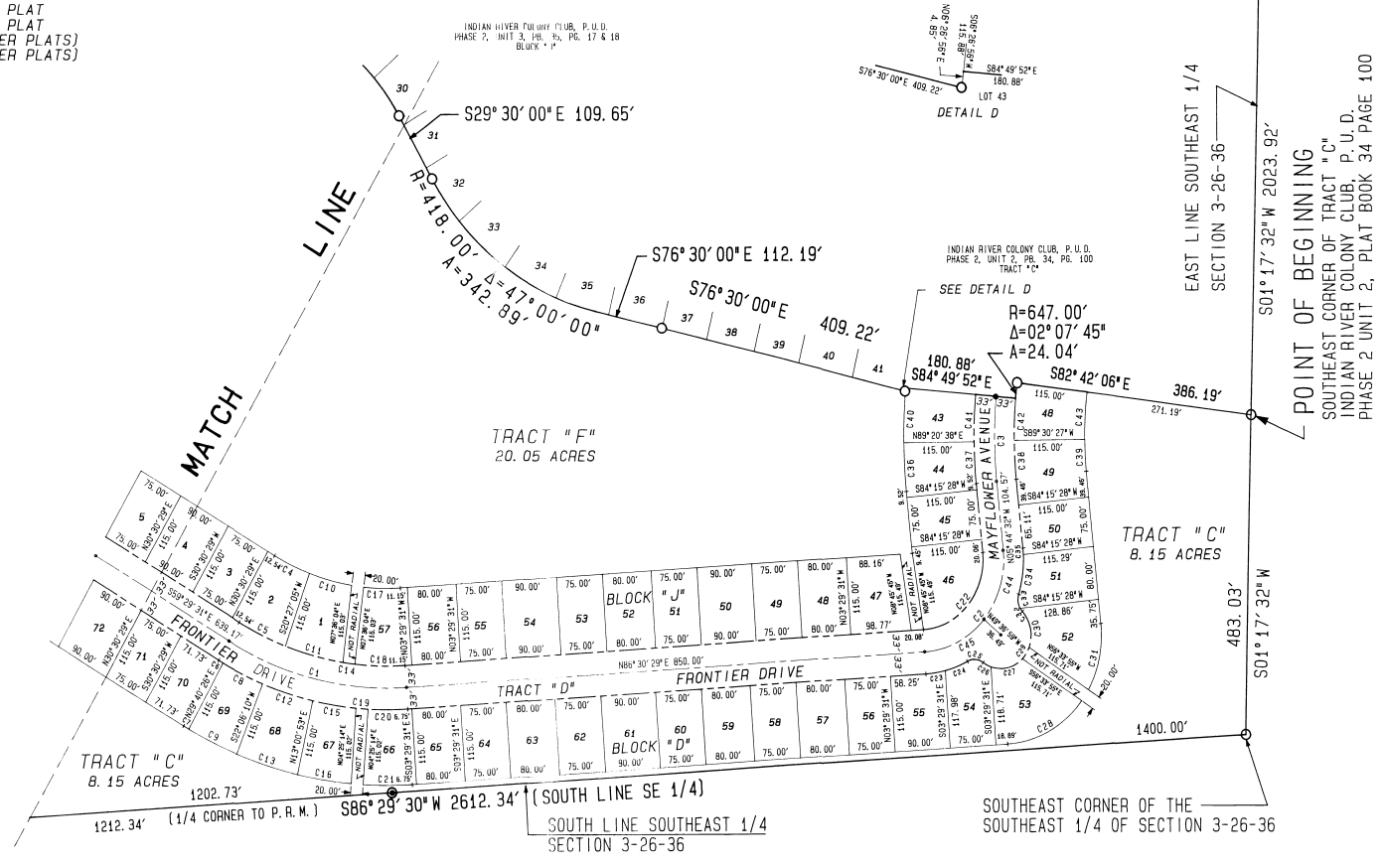
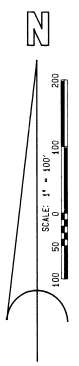
# INDIAN RIVER COLONY CLUB P. U. D., PHASE 2, UNIT 4

A SUBDIVISION OF A PORTION OF  
SECTION 3, TOWNSHIP 26 SOUTH, RANGE 36 EAST  
PREVARD COUNTY, FLORIDA

**JLP**  
**PEREZ**  
ASSOCIATES, INC.  
ENGINEERS AND LAND SURVEYORS  
134 FIFTH AVENUE, SUITE 103  
INDIAN RIVER, FLORIDA 32903  
TELEPHONE 1-407-951-0584

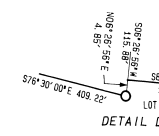
Station	Radius	Bella	Length	Tangent	Chord/Btg
11	144.00'	34°00'00"	302.64'	155.92'	298.22' N76°29'31.00W
12	137.80'	42°15'01"	221.87'	143.32'	198.67' N40°22'58.56E
13	160.00'	107°54'41"	129.50'	64.95'	129.50' S00°17'11.56E
14	160.00'	107°03'24"	63.54'	31.85'	63.54' N84°31'13.29W
15	177.00'	107°03'24"	83.72'	41.97'	83.72' N84°31'13.29W
16	144.00'	0°50'04"	7.94'	3.95'	7.94' N89°54'33.00W
17	168.00'	0°50'04"	9.58'	4.79'	9.58' N89°54'32.98W
18	144.00'	7°34'15"	71.75'	35.93'	71.75' N64°06'42.70W
19	144.00'	7°34'15"	86.85'	43.54'	86.85' N64°06'42.69W
20	160.00'	11°16'04"	71.19'	35.71'	71.09' N75°04'22.00W
21	177.00'	11°30'58"	96.98'	48.66'	96.81' N75°22'23.20W
22	144.00'	9°09'17"	86.13'	43.16'	86.04' N75°26'28.00W
23	168.00'	9°09'17"	104.37'	52.29'	104.26' N75°26'28.90W
24	177.00'	2°24'09"	20.00'	10.00'	20.00' N85°23'56.50W
25	144.00'	7°32'18"	71.44'	35.77'	71.39' N85°25'15.90W
26	168.00'	7°32'18"	88.69'	44.41'	88.62' N85°25'16.70W
27	160.00'	9°30'39"	60.98'	30.11'	60.92' N88°44'11.90W
28	177.00'	9°30'39"	82.35'	41.28'	82.56' N88°28'16.90W
29	144.00'	2°06'38"	20.00'	10.00'	20.00' N89°34'44.50W
30	144.00'	6°51'28"	64.98'	32.53'	64.84' S91°17'23.90W
31	168.00'	7°02'31"	80.87'	40.49'	80.82' N89°58'15.30W
32	168.00'	9°15'01"	168.74'	109.00'	168.74' N40°22'58.56E
33	176.80'	10°42'50"	31.94'	16.02'	31.89' S91°05'23.20W
34	176.80'	17°59'07"	38.71'	19.44'	38.63' S69°18'13.20W
35	144.00'	6°27'26.56"	27.25'	13.15'	27.25' S85°51'54.66E
36	144.00'	16°13'07"	14.44'	7.27'	14.39' N83°01'01.70W
37	144.00'	6°37'44.07"	55.62'	31.08'	55.62' S76°50'21.40W
38	168.00'	4°27'26.56"	142.83'	78.24'	138.32' N81°42'31.22E
39	144.00'	7°34'04.26"	20.14'	10.21'	20.00' S33°26'04.90W
40	168.00'	6°27'26.56"	57.94'	32.71'	54.75' S11°17'49.16E
41	168.00'	7°24'42.00"	102.81'	53.14'	101.18' N5°26'34.36E
42	144.00'	12°09'10"	5.30'	2.66'	6.30' N10°24'51.70W
43	144.00'	5°07'17.40"	20.95'	11.74'	21.25' N87°11'29.00W
44	176.80'	7°22'26.45"	60.72'	30.70'	60.43' S14°46'59.70W
45	176.80'	3°19'09"	9.89'	4.95'	9.89' S04°04'56.96E
46	176.80'	5°29'10"	73.59'	36.77'	73.57' N83°25'02.40W
47	144.00'	5°05'10"	63.29'	31.67'	63.48' N80°29'33.80W
48	144.00'	5°14'59"	58.28'	29.66'	59.26' N83°07'02.40W
49	144.00'	5°14'59"	48.74'	24.39'	48.90' N80°25'31.77E
50	176.80'	5°28'23"	79.33'	39.70'	79.30' N82°05'19.66E
51	144.00'	5°49'34"	72.49'	36.28'	72.46' N82°15'23.76E
52	144.00'	5°38'43"	63.34'	31.69'	63.91' N85°00'17.96E
53	144.00'	7°47'27"	72.34'	36.23'	72.28' N83°24'09.86E
54	137.80'	48°07'59"	110.84'	58.67'	107.90' S1°19'14.40W
55	137.80'	48°07'28"	110.93'	58.67'	107.96' S63°26'44.90W

- LEGEND**
- INDICATES P. C. P. THIS PLAT
  - ⊙ INDICATES P. R. M. THIS PLAT
  - INDICATES P. C. P. (OTHER PLATS)
  - INDICATES P. R. M. (OTHER PLATS)



POINT OF COMMENCEMENT  
NORTHEAST CORNER OF SECTION 3-26-36

EAST LINE NORTHEAST 1/4 SECTION 3-26-36  
S01°17'09\"/>



SEE DETAIL D  
R=647.00'  
Δ=02°07'45\"/>

TRACT "C"  
8.15 ACRES

TRACT "D"  
8.15 ACRES

FRONTIER DRIVE

SOUTH LINE SE 1/4 SECTION 3-26-36

SOUTHEAST CORNER OF THE SOUTHEAST 1/4 OF SECTION 3-26-36