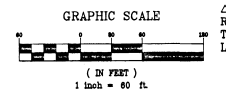
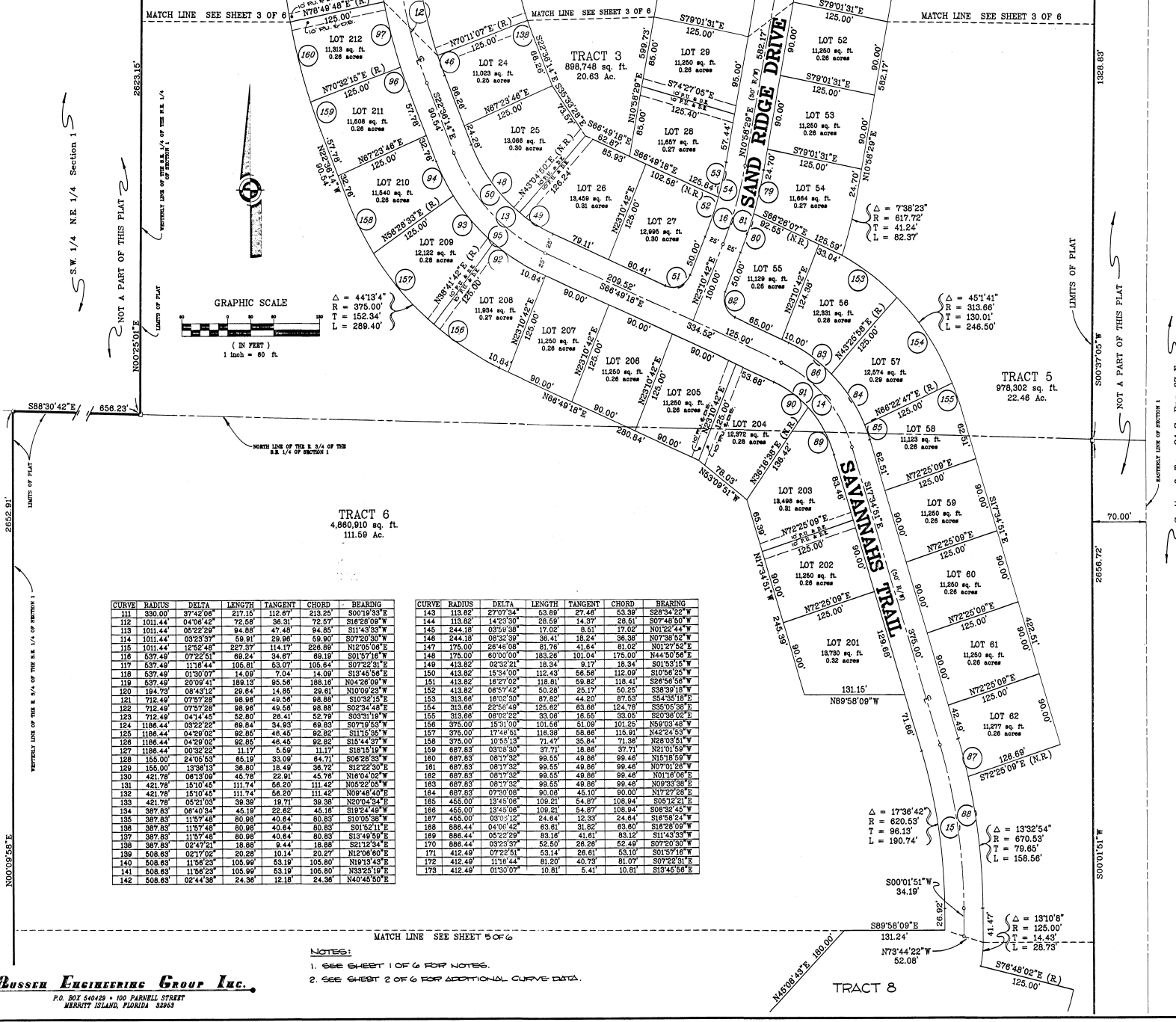


THE SAVANNAHS P.U.D.

A Subdivision lying in Sections 1 and 12, Township 24 South, Range 36 East, of Brevard County, Florida



CURVE	RADIUS	DELTA	LENGTH	TANGENT	CHORD	BEARING
111	330.00	37°42'06"	217.15	112.67	213.23	S00°19'33"E
112	1011.44	04°06'42"	72.68	36.31	72.57	S19°29'00"W
113	1011.44	05°22'29"	94.88	47.48	94.85	S11°43'33"W
114	1011.44	09°23'37"	59.91	29.96	59.90	S07°20'30"W
115	1011.44	12°52'49"	227.37	114.17	226.89	N10°05'08"E
116	537.49	07°22'51"	69.24	34.67	69.19	S01°57'16"W
117	537.49	11°16'44"	106.81	53.07	105.84	S07°22'31"E
118	537.49	01°30'07"	14.09	7.04	14.09	S19°45'58"E
119	537.49	23°08'41"	183.13	95.58	189.18	N04°29'00"W
120	194.73	08°43'12"	29.84	14.86	29.61	N10°09'23"W
121	712.49	07°57'28"	98.98	49.58	98.88	S10°32'15"E
122	712.49	07°57'28"	98.98	49.58	98.88	S02°34'40"E
123	712.49	04°14'45"	52.80	26.41	52.78	S09°31'19"W
124	1186.44	03°22'22"	69.84	34.93	69.83	S07°19'53"W
125	1186.44	04°29'02"	92.86	46.45	92.82	S11°15'59"W
126	1186.44	04°29'02"	92.86	46.45	92.82	S15°44'57"W
127	1186.44	00°32'22"	11.74	5.89	11.77	S18°15'19"W
128	155.00	24°05'53"	85.19	33.09	84.71	S08°28'38"W
129	155.00	13°38'13"	36.80	18.49	36.72	S12°22'50"E
130	421.78	08°13'00"	45.70	22.81	45.70	S18°24'02"W
131	421.78	16°10'45"	111.74	56.20	111.42	N05°22'05"W
132	421.78	16°10'45"	111.74	56.20	111.42	N09°48'40"E
133	421.78	05°21'03"	39.39	19.71	39.38	S04°24'54"E
134	387.83	06°40'34"	45.19	22.62	45.18	S19°24'40"W
135	387.83	11°57'45"	80.98	40.64	80.83	S10°05'38"W
136	387.83	11°57'45"	80.98	40.64	80.83	S01°52'11"E
137	387.83	11°57'45"	80.98	40.64	80.83	S13°49'03"E
138	387.83	02°47'21"	18.88	9.44	18.88	S12°12'34"E
139	508.83	02°17'02"	20.28	10.14	20.27	N12°08'00"E
140	508.83	11°58'25"	105.90	53.19	105.80	N10°19'43"E
141	508.83	11°58'25"	105.90	53.19	105.80	N03°25'19"E
142	508.83	02°44'38"	24.36	12.18	24.36	N40°40'50"E

CURVE	RADIUS	DELTA	LENGTH	TANGENT	CHORD	BEARING
143	113.82	27°07'34"	53.59	27.46	53.39	S23°34'22"W
144	113.82	14°23'30"	38.69	14.37	38.61	S07°48'50"W
145	244.18	03°59'38"	17.02	8.51	17.02	N01°22'44"W
146	244.18	08°32'38"	36.41	18.24	36.38	N07°38'52"W
147	175.00	28°40'08"	81.78	41.84	81.02	N01°22'52"E
148	175.00	60°00'00"	183.28	101.04	175.00	N44°50'58"E
149	413.82	02°32'21"	18.34	9.17	18.34	S01°53'15"W
150	413.82	15°34'00"	112.43	56.56	112.09	S10°56'23"E
151	413.82	19°27'02"	118.81	59.82	118.41	S28°54'58"W
152	413.82	08°57'42"	60.28	25.17	60.25	S38°39'18"W
153	313.86	16°06'30"	87.82	44.20	87.53	S44°35'18"E
154	313.86	22°36'49"	125.82	63.86	124.78	S33°03'38"E
155	313.86	08°06'22"	39.08	19.55	39.05	S20°38'02"E
156	375.00	15°31'00"	101.58	51.09	101.25	N59°03'48"W
157	375.00	17°44'51"	118.38	58.88	115.91	N42°24'53"W
158	375.00	10°51'13"	71.47	35.94	71.38	N28°23'51"W
159	687.83	03°08'30"	37.71	18.86	37.71	N101°50'59"W
160	687.83	09°17'32"	69.55	49.88	69.48	N15°18'59"W
161	687.83	09°17'32"	69.55	49.88	69.48	N07°01'28"W
162	687.83	09°17'32"	69.55	49.88	69.48	N01°16'05"E
163	687.83	09°17'32"	69.55	49.88	69.48	N08°33'58"E
164	687.83	07°30'08"	80.08	45.10	80.00	N17°27'28"E
165	455.00	13°43'08"	109.21	54.87	108.94	S05°12'21"E
166	455.00	13°43'08"	109.21	54.87	108.94	S08°33'45"W
167	455.00	03°01'12"	24.84	12.33	24.84	S18°58'24"W
168	886.44	04°06'42"	63.61	31.82	63.60	S18°25'08"W
169	886.44	04°06'42"	63.61	31.82	63.61	S14°43'38"E
170	886.44	03°23'37"	63.60	28.28	63.48	S07°20'30"W
171	412.49	07°22'51"	53.14	26.61	53.10	S01°57'18"W
172	412.49	07°22'51"	53.14	26.61	53.10	S03°22'33"E
173	412.49	01°30'07"	10.81	5.41	10.81	S13°45'58"E

MATCH LINE SEE SHEET 5 OF 6

- NOTES:
1. SEE SHEET 1 OF 6 FOR NOTES.
2. SEE SHEET 2 OF 6 FOR ADDITIONAL CURVE DATA.