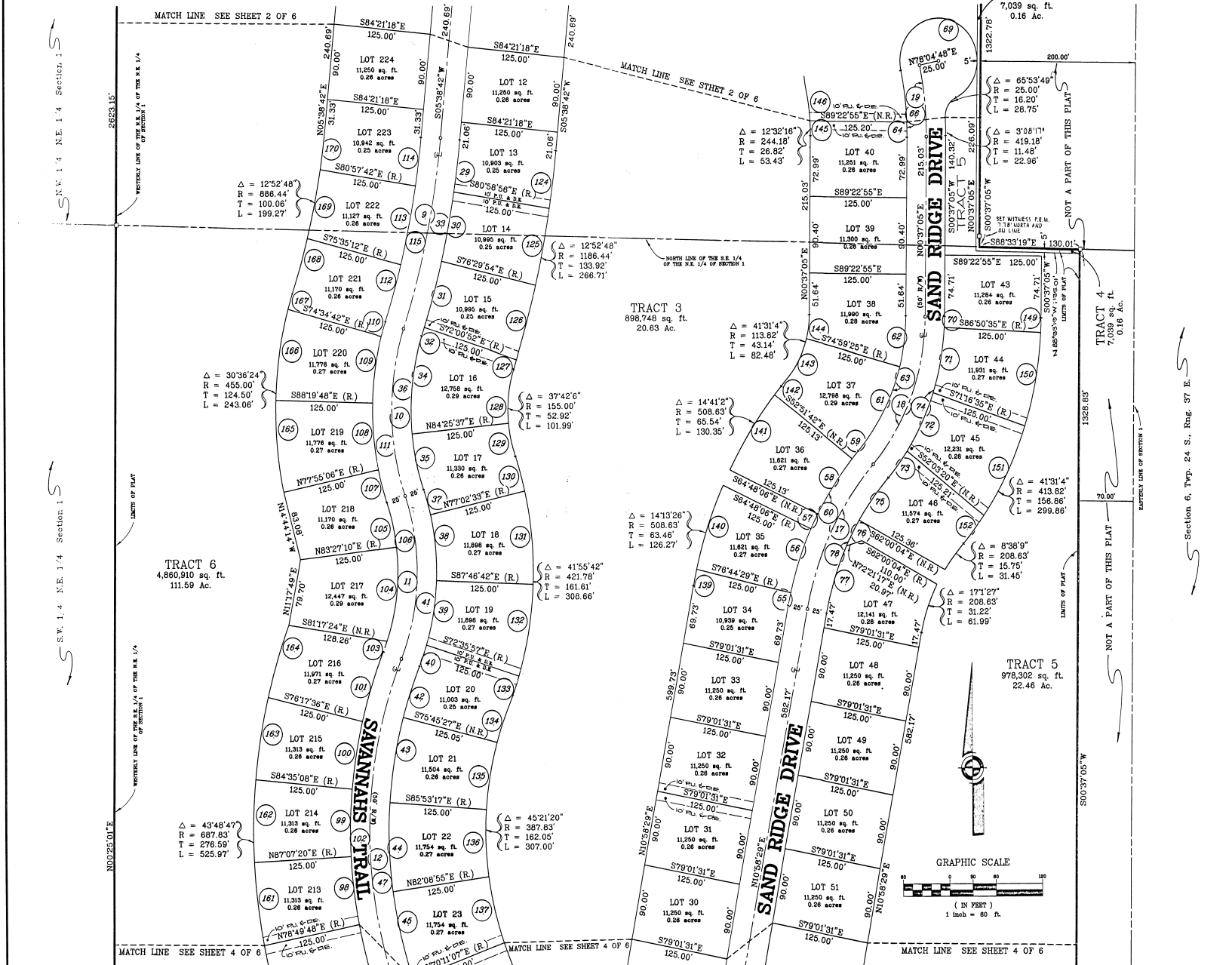


THE SAVANNAHS P.U.D.

A Subdivision lying in Sections 1 and 12, Township 24 South, Range 36 East, of Brevard County, Florida



NOTES:
1. SEE SHEET 1 OF 6 FOR NOTES.
2. SEE SHEETS 2 AND 4 OF 6 FOR CURVE DATA.