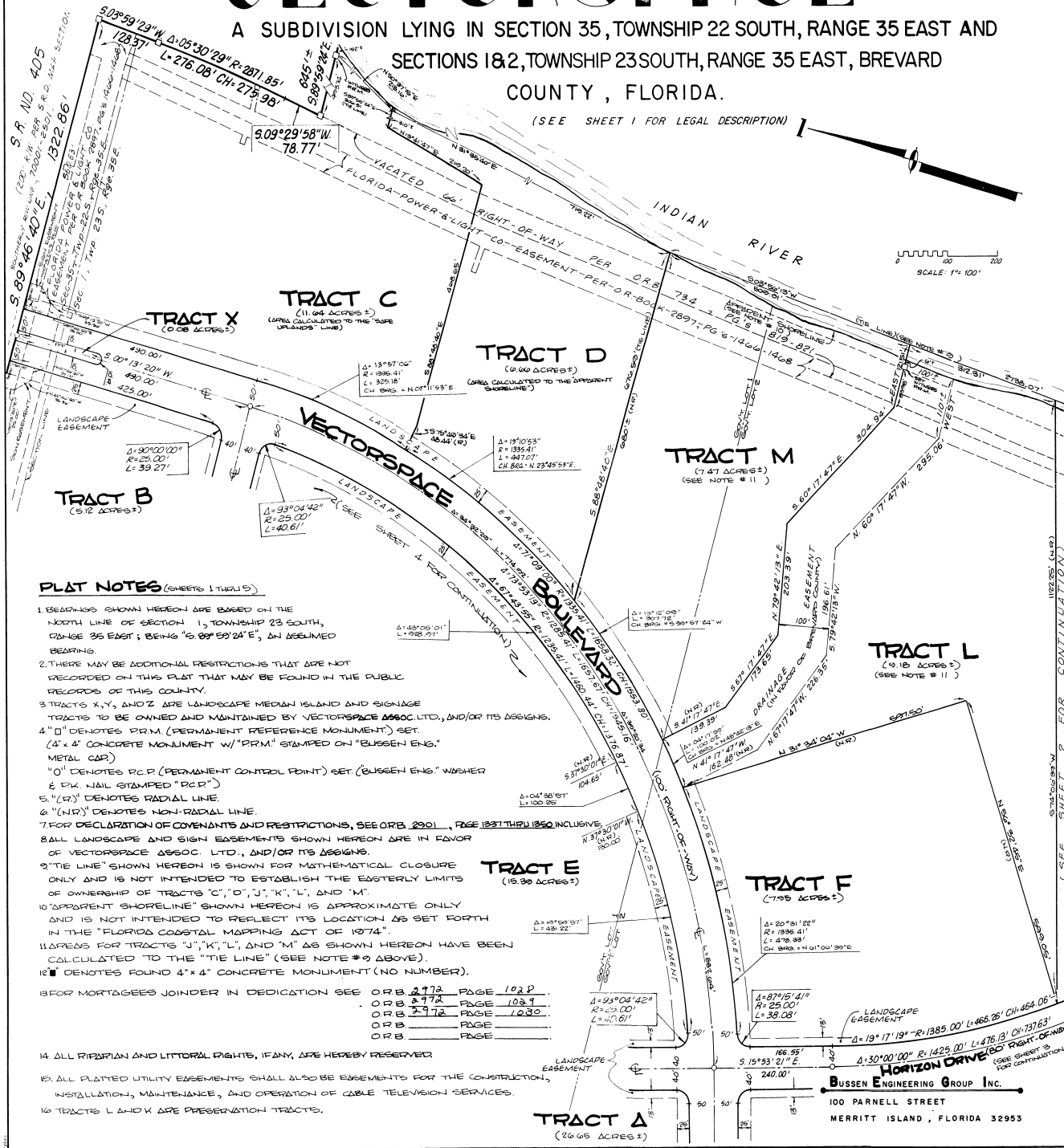


VECTORSPACE

A SUBDIVISION LYING IN SECTION 35, TOWNSHIP 22 SOUTH, RANGE 35 EAST AND SECTIONS 1&2, TOWNSHIP 23 SOUTH, RANGE 35 EAST, BREVARD COUNTY, FLORIDA.

(SEE SHEET 1 FOR LEGAL DESCRIPTION)



PLAT NOTES (SHEETS 1 THRU 5)

- BEARINGS SHOWN HEREON ARE BASED ON THE NORTH LINE OF SECTION 1, TOWNSHIP 23 SOUTH, RANGE 35 EAST; BEING "S 09° 59' 24\" E", AN ASSUMED BEARING.
- THERE MAY BE ADDITIONAL RESTRICTIONS THAT ARE NOT RECORDED ON THIS PLAT THAT MAY BE FOUND IN THE PUBLIC RECORDS OF THIS COUNTY.
- TRACTS X, Y, AND Z ARE LANDSCAPE MEDIAN ISLAND AND SIGNAGE TRACTS TO BE OWNED AND MAINTAINED BY VECTORSPACE ASSOC. LTD., AND/OR ITS ASSIGNS.
- "O" DENOTES P.R.M. (PERMANENT REFERENCE MONUMENT) SET. (4' x 4' CONCRETE MONUMENT W/ "P.R.M." STAMPED ON "BUSSEN ENG." METAL CAP)
"O" DENOTES P.C.P. (PERMANENT CONTROL POINT) SET. ("BUSSEN ENG." WASHED & P.K. NAIL STAMPED "P.C.P.")
- "(R)" DENOTES RADIAL LINE.
- "(NR)" DENOTES NON-RADIAL LINE.
- FOR DECLARATION OF COVENANTS AND RESTRICTIONS, SEE ORB 2901, PAGE 1827 THRU 1850 INCLUSIVE.
- ALL LANDSCAPE AND SIGN EASEMENTS SHOWN HEREON ARE IN FAVOR OF VECTORSPACE ASSOC. LTD., AND/OR ITS ASSIGNS.
- "TIE LINE" SHOWN HEREON IS SHOWN FOR MATHEMATICAL CLOSURE ONLY AND IS NOT INTENDED TO ESTABLISH THE EASTERLY LIMITS OF OWNERSHIP OF TRACTS "C", "D", "J", "K", "L", AND "M".
- "APPARENT SHORELINE" SHOWN HEREON IS APPROXIMATE ONLY AND IS NOT INTENDED TO REFLECT ITS LOCATION AS SET FORTH IN THE "FLORIDA COASTAL MAPPING ACT OF 1974".
- AREAS FOR TRACTS "J", "K", "L", AND "M" AS SHOWN HEREON HAVE BEEN CALCULATED TO THE "TIE LINE" (SEE NOTE #9 ABOVE).
- "■" DENOTES FOUND 4' x 4' CONCRETE MONUMENT (NO NUMBER).
- FOR MORTGAGEES JOINDER IN DEDICATION SEE ORB 2972 PAGE 102 P.
ORB 2972 PAGE 102 P.
ORB 2972 PAGE 102 P.
ORB PAGE
ORB PAGE
- ALL RIPARIAN AND LITTORAL RIGHTS, IF ANY, ARE HEREBY RESERVED.
- ALL PLATTED UTILITY EASEMENTS SHALL ALSO BE EASEMENTS FOR THE CONSTRUCTION, INSTALLATION, MAINTENANCE, AND OPERATION OF CABLE TELEVISION SERVICES.
- TRACTS L AND K ARE PRESENTATION TRACTS.

PLAT BOOK 35 PAGE 47
SHEET 5 OF 5
SECTION 35 (42) TWP 22 S, RANGE 35 E.

DEDICATION

KNOW ALL MEN BY THESE PRESENTS, That the Corporation named below, being the owner in fee simple of the lands described in **VECTORSPACE - TRACT C** hereby dedicates said lands and plat for the uses and purposes therein expressed and dedicates all roads, streets, alleys, thoroughfares, parks, canals, drainage easements, utility easements, lakes, pathways, open spaces and other right of way, easements shown hereon to the perpetual use of the public, and IN WITNESS WHEREOF, has caused these presents to be signed and attested to by the officers named below and its corporate seal to be affixed hereto on DECEMBER 15, 1988 (DATE).

By George M. Beason, Jr. President
Attest: Kelley Wilson Secretary

Signed and sealed in the presence of
ONE TRAVELERLY BASE Rob Street Tague
MONTICELLO, ALABAMA

U.S. SPACE CAMP FOUNDATION, INC. COUNTY OF MADISON
STATE OF ALABAMA
THIS IS TO CERTIFY, That on DECEMBER 15, 1988 before me, an officer duly authorized to take acknowledgments in this State and County aforesaid, personally appeared GEORGE M. BEASON, JR. and KELLEY WILSON respectively, President and ASSISTANT SECRETARY of the above named corporation incorporated under the laws of the State of ALABAMA, to me known to be the individuals and officers described in and who executed the foregoing Dedication and severally acknowledged the execution thereof to be their free act and deed as such officers thereto duly authorized; that the official seal of said corporation is duly affixed thereto; and that the said Dedication is the act and deed of said corporation.

IN WITNESS WHEREOF, I have here set my hand, and seal on the above date.
Rob Street Tague
NOTARY PUBLIC

My Commission Expires 6-8-91
SEE SHEETS 1, 2, 3, 4 FOR ADDITIONAL DEDICATIONS

CERTIFICATE OF SURVEYOR
KNOW ALL MEN BY THESE PRESENTS, That the undersigned, being a licensed and registered land surveyor, does hereby certify that an accurate and correct survey of the lands shown on this plat has been completed and that the representation of the lands therein described and platted; that permanent reference monuments have been placed as shown thereon and that the same comply with Chapters 177 & 472 Florida Statutes; and that said land is located in Brevard County, Florida. Dated _____
Registration No. _____

CERTIFICATE OF APPROVAL BY MUNICIPALITY
THIS IS TO CERTIFY, That on _____ the _____ approved the foregoing plat.
SEAL
ATTEST: _____ MAYOR.
_____ CITY CLERK.

CERTIFICATE OF ACCEPTANCE OF DEDICATION BY BOARD OF COUNTY COMMISSIONERS
THIS IS TO CERTIFY, That the Board of County Commissioners hereby accepts all roads, streets, alleys, thoroughfares, parks, canals, drainage easements, utility easements, lakes, pathways, open spaces and other rights of way, easements of areas dedicated for public use on this plat.
Chairman of the Board _____
ATTEST: _____ Clerk of the Board.

CERTIFICATE OF APPROVAL BY BOARD OF COUNTY COMMISSIONERS
THIS IS TO CERTIFY, That _____ the foregoing plat was approved by the Board of County Commissioners of Brevard County, Florida.
Chairman of the Board _____
ATTEST: _____ Clerk of the Board.
Approved _____ County Engineer

CERTIFICATE OF APPROVAL BY PLANNING AND ZONING COMMISSION
THIS IS TO CERTIFY, That _____ the foregoing plat was approved by the Planning and Zoning Commission of the above _____ Planning and Zoning Director

CERTIFICATE OF CLERK
I HEREBY CERTIFY, That I have examined the foregoing plat and find that it complies in form with all the requirements of Chapter 177, Florida Statutes, and was filed for record on _____ File No. _____
Clerk of the Circuit Court in and for Brevard County, Fla.