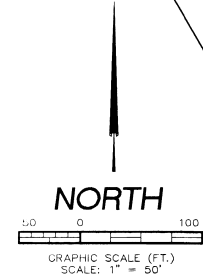
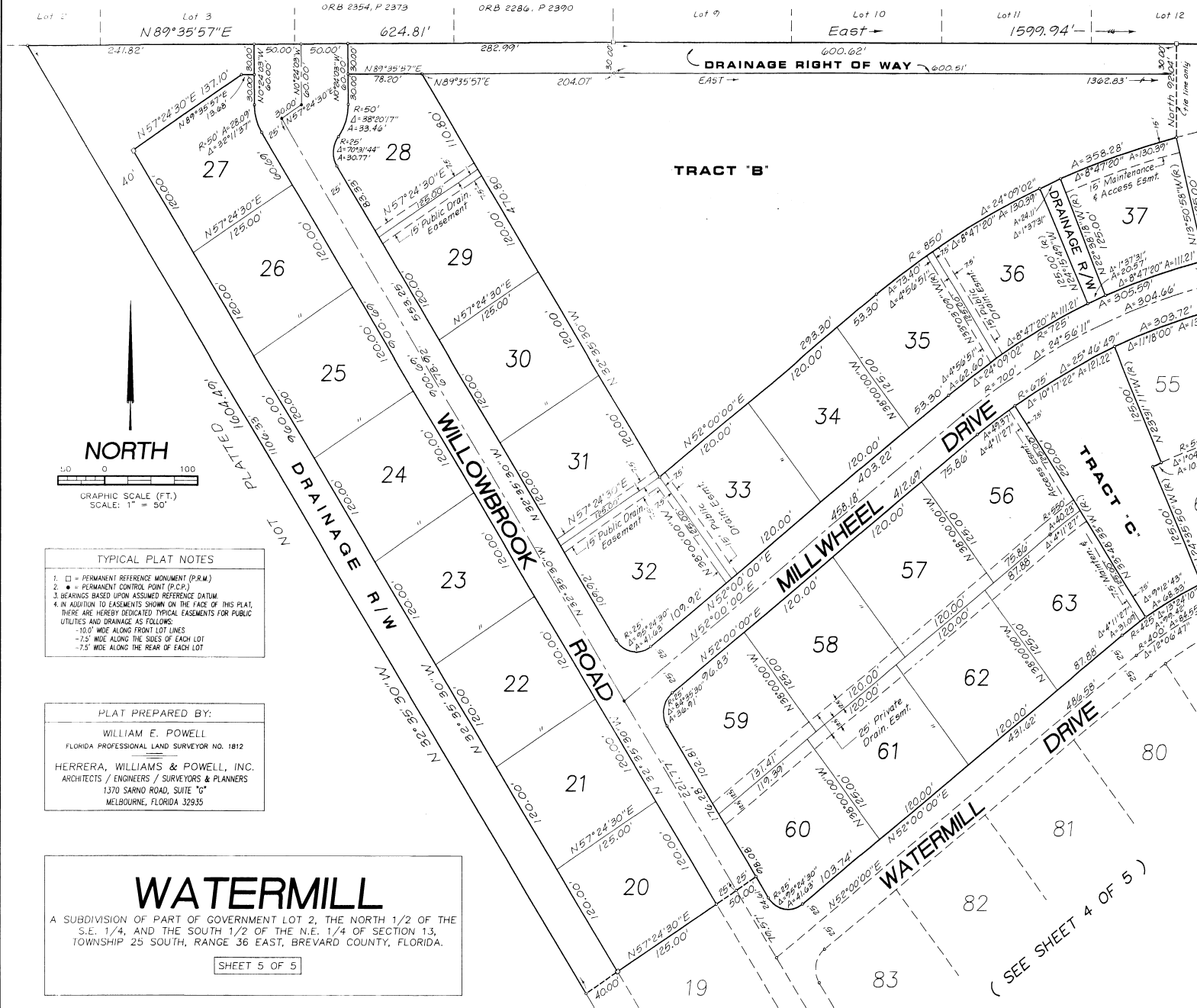


SOUTH MERRITT ESTATES LAKE SECTION
 R.B. 28, P. 56

SOUTH MERRITT ESTATES PINELAND SECTION
 R.B. 14, P. 10



TYPICAL PLAT NOTES

- = PERMANENT REFERENCE MONUMENT (P.R.M.)
- = PERMANENT CONTROL POINT (P.C.P.)
- BEARINGS BASED UPON ASSUMED REFERENCE DATUM
- IN ADDITION TO EASEMENTS SHOWN ON THE FACE OF THIS PLAT, THERE ARE HEREBY DEDICATED TYPICAL EASEMENTS FOR PUBLIC UTILITIES AND DRAINAGE AS FOLLOWS:
 -10.0' WIDE ALONG FRONT LOT LINES
 -7.5' WIDE ALONG THE SIDES OF EACH LOT
 -7.5' WIDE ALONG THE REAR OF EACH LOT

PLAT PREPARED BY:
 WILLIAM E. POWELL
 FLORIDA PROFESSIONAL LAND SURVEYOR NO. 1812
 HERRERA, WILLIAMS & POWELL, INC.
 ARCHITECTS / ENGINEERS / SURVEYORS & PLANNERS
 1370 SARNO ROAD, SUITE "G"
 MELBOURNE, FLORIDA 32935

WATERMILL
 A SUBDIVISION OF PART OF GOVERNMENT LOT 2, THE NORTH 1/2 OF THE S.E. 1/4, AND THE SOUTH 1/2 OF THE N.E. 1/4 OF SECTION 13, TOWNSHIP 25 SOUTH, RANGE 36 EAST, BREVARD COUNTY, FLORIDA.

SHEET 5 OF 5

(SEE SHEET 2 OF 5)

(SEE SHEET 4 OF 5)