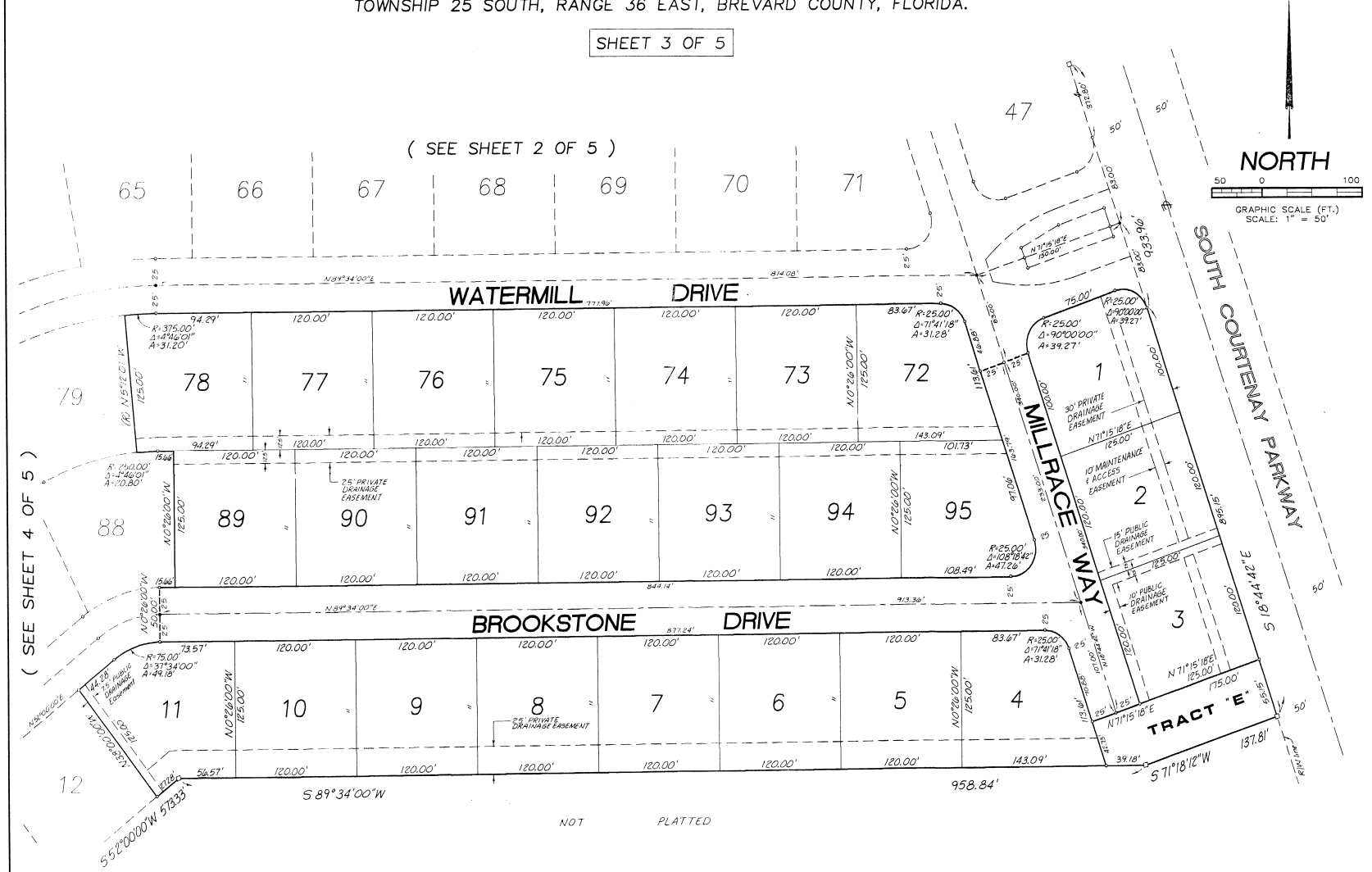


WATERMILL

A SUBDIVISION OF PART OF GOVERNMENT LOT 2, THE NORTH 1/2 OF THE S.E. 1/4, AND THE SOUTH 1/2 OF THE N.E. 1/4 OF SECTION 13, TOWNSHIP 25 SOUTH, RANGE 36 EAST, BREVARD COUNTY, FLORIDA.

SHEET 3 OF 5



(SEE SHEET 4 OF 5)

(SEE SHEET 2 OF 5)

- TYPICAL PLAT NOTES**
1. □ = PERMANENT REFERENCE MONUMENT (P.R.M.)
 2. ● = PERMANENT CONTROL POINT (P.C.P.)
 3. BEARINGS BASED UPON ASSUMED REFERENCE DATUM.
 4. IN ADDITION TO EASEMENTS SHOWN ON THE FACE OF THIS PLAT, THERE ARE HEREBY DEDICATED TYPICAL EASEMENTS FOR PUBLIC UTILITIES AND DRAINAGE AS FOLLOWS:
 - 10.0' WIDE ALONG FRONT LOT LINES
 - 7.5' WIDE ALONG THE SIDES OF EACH LOT
 - 7.5' WIDE ALONG THE REAR OF EACH LOT

PLAT PREPARED BY:
 WILLIAM E. POWELL
 FLORIDA PROFESSIONAL LAND SURVEYOR NO. 1812
 HERRERA, WILLIAMS & POWELL, INC.
 ARCHITECTS / ENGINEERS / SURVEYORS & PLANNERS
 1370 SARNO ROAD, SUITE "G"
 MELBOURNE, FLORIDA 32935

NOT PLATTED