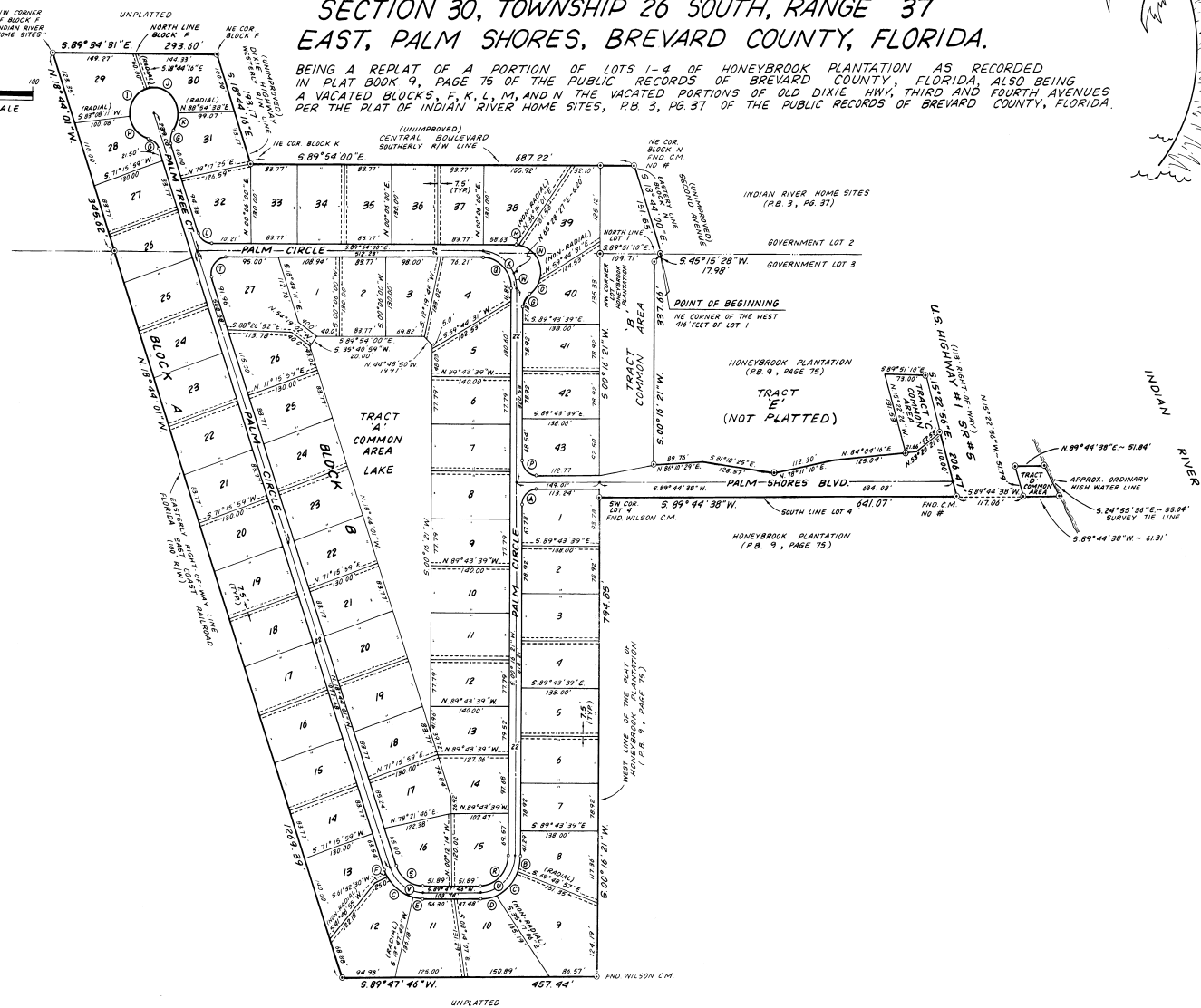
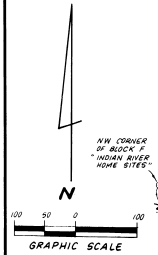
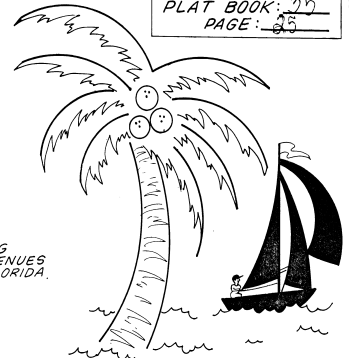


PALM SHORE ESTATES

A SUBDIVISION OF A PORTION OF SECTION 30, TOWNSHIP 26 SOUTH, RANGE 37 EAST, PALM SHORES, BREVARD COUNTY, FLORIDA.

BEING A REPLAT OF A PORTION OF LOTS 1-4 OF HONEYBROOK PLANTATION AS RECORDED IN PLAT BOOK 9, PAGE 75 OF THE PUBLIC RECORDS OF BREVARD COUNTY, FLORIDA, ALSO BEING A VACATED BLOCKS, F, K, L, M, AND N THE VACATED PORTIONS OF OLD DIXIE HWY, THIRD AND FOURTH AVENUES PER THE PLAT OF INDIAN RIVER HOME SITES, P.B. 3, PG. 37 OF THE PUBLIC RECORDS OF BREVARD COUNTY, FLORIDA.



DRAWN BY: M. BATCHELOR

PREPARED BY:
BRIEL & ASSOCIATES
LAND SURVEYORS, INC.
SATELLITE BEACH, FLORIDA
(407) 777-4075