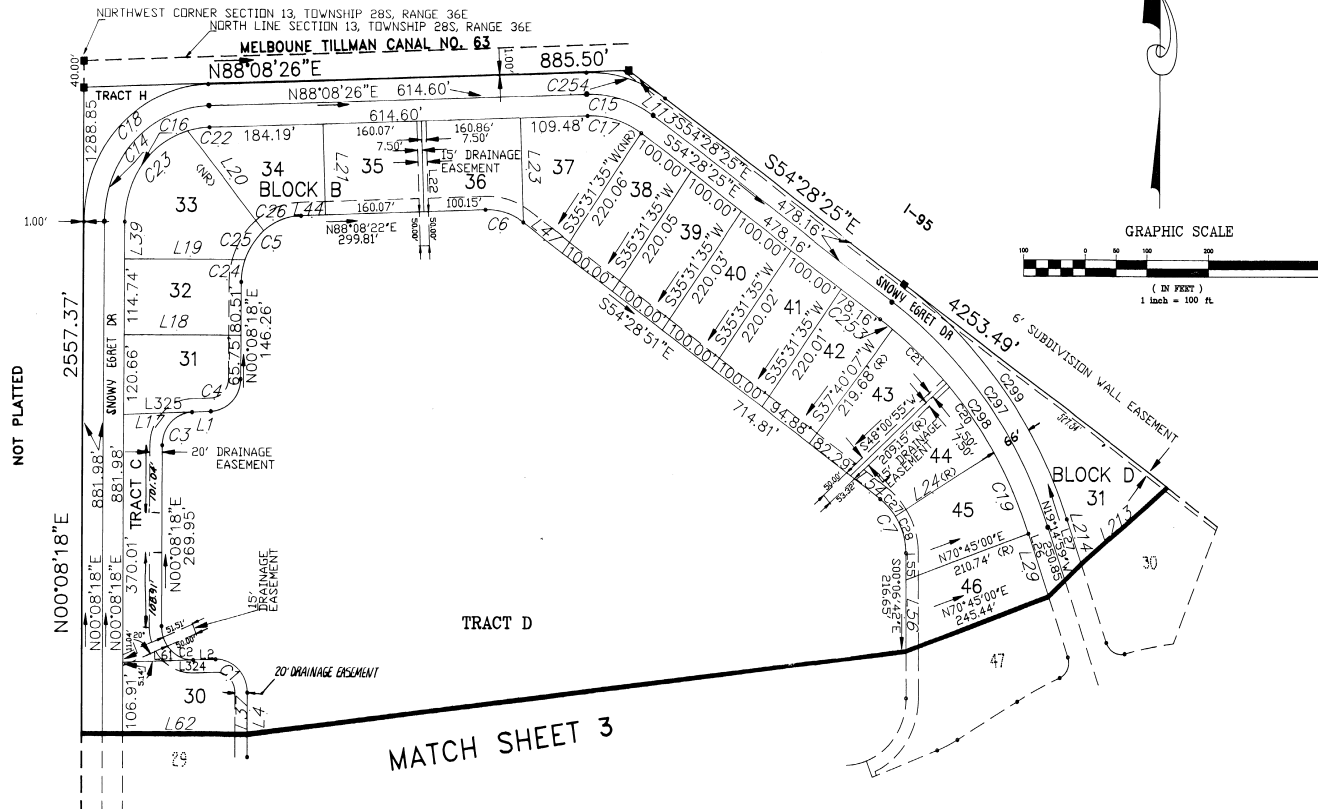


CARRIAGE GATE SUBDIVISION

A RESUBDIVISION OF A PORTION OF JUNE PARK ADDITION NO. 2 AS RECORDED IN PLAT BOOK 6, PAGE 32, PUBLIC RECORDS OF BREVARD COUNTY, FLORIDA, TOGETHER WITH THE NORTHWEST 1/4 OF THE NORTHWEST 1/4 AND THE NORTHEAST 1/4 OF SECTION 13, TOWNSHIP 28 SOUTH, RANGE 36 EAST, ALL LYING SOUTH OF INTERSTATE 95, BREVARD COUNTY, FLORIDA.



- LEGEND
- PRM LABELED PLS 1761
 - PCP MARKED PLS 1761
 - R RADIAL LINE
 - NR NON-RADIAL LINE
 - REFERENCE POINT

PREPARED BY:
H.J. SMITH LAND SURVEYING, INC.
1400 PALM BAY ROAD
PALM BAY, FL 32905
(407)724-2940
AND
BSE CONSULTANTS, INC.
325 FIFTH AVE., SUITE 202
INDIANLAND, FL 32903
(407)725-3674