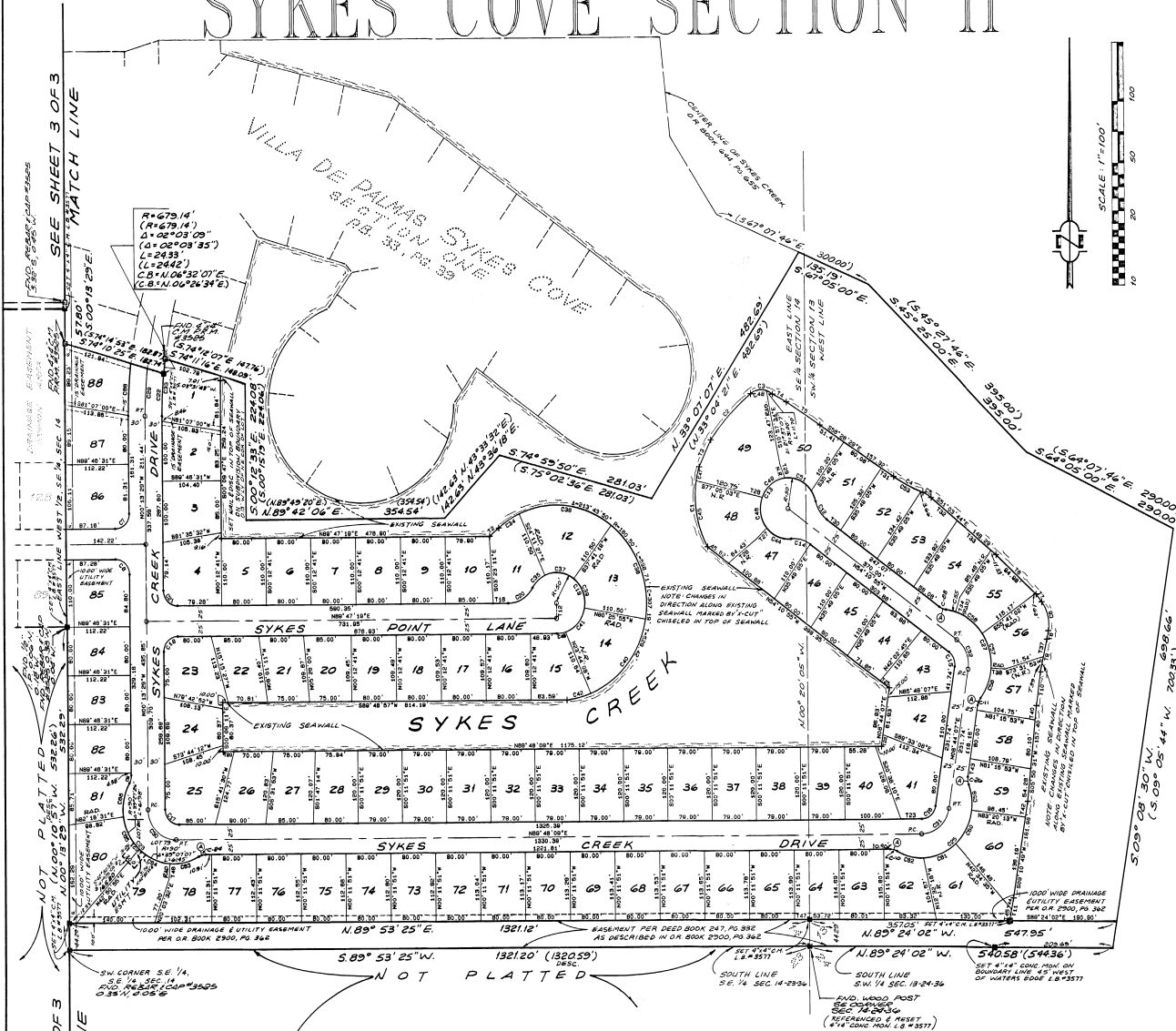


# Villa De Palmas SYKES COVE SECTION II



**(A) CURVE DATA**  
 $\Delta = 29^\circ 35' 31''$   
 $R = 25.00'$   
 $L = 12.91'$

- NOTES:
1. TRACT "A" IS DEDICATED AS A COMMON AREA FOR PARK PURPOSES (SEE GENERAL NOTES PAGE ONE).
  2. DRAINAGE EASEMENT FOR WATER RETENTION IS DEDICATED AS A COMMON AREA (SEE GENERAL NOTES PAGE ONE).
  3. SEE PAGE ONE FOR CURVE AND LINE TABLES.
  4. SEE PAGE ONE FOR SCHEDULE OF EASEMENTS.

**CDG**  
**THE CIVIL DESIGN GROUP**  
 INC.  
 ENGINEERS • SURVEYORS • PLANNERS  
 ORLANDO, FLORIDA

**DEDICATION**

KNOW ALL MEN BY THESE PRESENTS, That the Corporation named below, being the owner in fee simple of the lands described in

\_\_\_\_\_ hereby dedicates said lands and plat for the uses and purposes herein expressed and dedicates all roads, streets, alleys, thoroughfares, parks, canals, drainage easements, utility easements, lakes, pathways, open spaces and other rights of way, easements shown hereon for the perpetual use of the public; and

IN WITNESS WHEREOF, has caused these presents to be signed and attested to by the officers named below and its corporate seal to be affixed hereto on \_\_\_\_\_

By \_\_\_\_\_  
 President

Attest \_\_\_\_\_  
 Secretary

Signed and sealed in the presence of \_\_\_\_\_

---

STATE OF \_\_\_\_\_ COUNTY OF \_\_\_\_\_

THIS IS TO CERTIFY, That on \_\_\_\_\_ before me, an officer duly authorized to take acknowledgments in the State and County aforesaid, personally appeared \_\_\_\_\_ and \_\_\_\_\_ respectively, of the above named corporation incorporated under the laws of the State of \_\_\_\_\_, to me known to be the individuals and officers described in and who executed the foregoing Dedication and severally acknowledged the execution thereof to be their free act and deed as such officers thereunto duly authorized; that the official seal of said corporation is duly affixed thereto; and that the said Dedication is the act and deed of said corporation.

IN WITNESS WHEREOF, I have hereunto set my hand and seal on the above date.

---

NOTARY PUBLIC  
 My Commission Expires \_\_\_\_\_ SEAL

---

**CERTIFICATE OF SURVEYOR**

KNOW ALL MEN BY THESE PRESENTS, That the undersigned, being a licensed and registered land surveyor, does hereby certify that an accurate and correct survey of the lands as shown in the foregoing plat; that said plat is a correct representation of the lands therein described and plotted; that permanent reference monuments have been placed as shown thereon as required by Chapters 177 & 472, Florida Statutes; and that said land is located in Brevard County, Florida. Dated \_\_\_\_\_

\_\_\_\_\_  
 Registration No. \_\_\_\_\_

---

**CERTIFICATE OF APPROVAL BY MUNICIPALITY**

THIS IS TO CERTIFY, That on \_\_\_\_\_ the \_\_\_\_\_ approved the foregoing plat.

\_\_\_\_\_  
 SEAL  
 MAYOR  
 CITY CLERK

---

**CERTIFICATE OF ACCEPTANCE OF DEDICATION BY BOARD OF COUNTY COMMISSIONERS**

THIS IS TO CERTIFY, That the Board of County Commissioners hereby accept all roads, streets, alleys, thoroughfares, parks, canals, drainage easements, utility easements, lakes, pathways, open spaces and other rights of way, easements and areas dedicated for public use on this plat.

\_\_\_\_\_  
 Chairman of the Board

---

**CERTIFICATE OF APPROVAL BY BOARD OF COUNTY COMMISSIONERS**

THIS IS TO CERTIFY, That on \_\_\_\_\_ the \_\_\_\_\_ approved the foregoing plat/ass approved by the Board of County Commissioners of Brevard County, Florida.

\_\_\_\_\_  
 Chairman of the Board

---

**CERTIFICATE OF APPROVAL BY PLANNING AND ZONING COMMISSION**

THIS IS TO CERTIFY, That on \_\_\_\_\_ the \_\_\_\_\_ approved the foregoing plat.

\_\_\_\_\_  
 Planning and Zoning Director

---

**CERTIFICATE OF CLERK**

I HEREBY CERTIFY, That I have examined the foregoing plat and find that it complies in form with all the requirements of Chapter 177, Florida Statutes, and was filed for record on \_\_\_\_\_ at \_\_\_\_\_ File No. \_\_\_\_\_

\_\_\_\_\_  
 Clerk of the Circuit Court  
 in and for Brevard County, Fla.