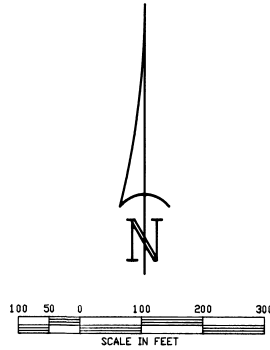
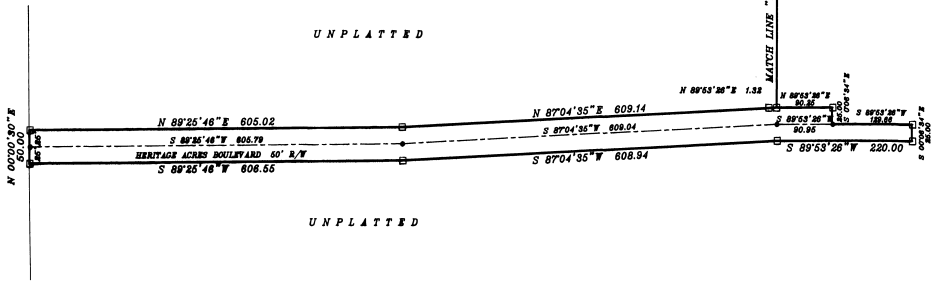


# HERITAGE ACRES

SECTION 16, TOWNSHIP 25 SOUTH, RANGE 36 EAST  
CITY OF ROCKLEDGE, BREVARD COUNTY, FLORIDA



FISKE BOULEVARD 200' R/W



**BENCHMARK**  
Engineering and  
Surveying  
305-636-1830  
563 Barton Blvd, Suite # & Rockledge, Florida 32955  
DAG

**DEDICATION**

KNOW ALL MEN BY THESE PRESENTS, That the Corporation named below, being the owner in fee simple of the lands described in HERITAGE ACRES

hereby dedicates said lands and plat for the uses and purposes therein expressed and dedicates of roads, streets, alleys, thoroughfares, parks, canals, drainage easements, utility easements, lakes, pathways, open spaces and other rights of way, easements shown hereon to the perpetual use of the public, and

IN WITNESS WHEREOF, has caused these presents to be signed and attested to by the officers named below and its corporate seal to be affixed hereto on

By \_\_\_\_\_ President

Attest: \_\_\_\_\_

Signed and sealed in the presence of \_\_\_\_\_

STATE OF \_\_\_\_\_ COUNTY OF \_\_\_\_\_

THIS IS TO CERTIFY, That on \_\_\_\_\_ before me, an officer duly authorized to take acknowledgments in the State and County aforesaid, personally appeared \_\_\_\_\_ and \_\_\_\_\_ respectively \_\_\_\_\_ President and \_\_\_\_\_ of the above named corporation incorporated under the laws of the State of \_\_\_\_\_ to me known to be the individuals and officers described in and who executed the foregoing Dedication and severally acknowledged the execution thereof to be their free act and deed as such officers thereunto duly authorized; that the official seal of said corporation is duly affixed thereto, and that the said Dedication is the act and deed of said corporation.

IN WITNESS WHEREOF, I have hereto set my hand and seal on the above date.

NOTARY PUBLIC  
My Commission Expires \_\_\_\_\_ SEAL

**CERTIFICATE OF SURVEYOR**

KNOW ALL MEN BY THESE PRESENTS, That the undersigned, being a licensed and registered land surveyor, does hereby certify that on JULY 14, 1988 he completed the survey of the lands as shown in the foregoing plat, that said plat is a correct representation of the lands therein described and platted; that permanent reference monuments have been placed as shown thereon as required by Chapters 177 & 472 Florida Statutes; and that said land is located in Brevard County, Florida. Dated JULY 27, 1988

Registration No. 4202

**CERTIFICATE OF APPROVAL BY MUNICIPALITY**

THIS IS TO CERTIFY, That on August 3, 1988 the City Council of the City of Rockledge, Florida approved the foregoing plat.

ATTEST: \_\_\_\_\_ MAYOR  
Donna Hamilton CITY CLERK

**CERTIFICATE OF ACCEPTANCE OF DEDICATION BY BOARD OF COUNTY COMMISSIONERS**

THIS IS TO CERTIFY That the Board of County Commissioners hereby accepts all roads, streets, alleys, thoroughfares, parks, canals, drainage easements, utility easements, lakes, pathways, open spaces and other rights of way, easements and areas dedicated for public use on this plat.

Chairman of the Board  
ATTEST: \_\_\_\_\_

**CERTIFICATE OF APPROVAL BY BOARD OF COUNTY COMMISSIONERS**

THIS IS TO CERTIFY, That on \_\_\_\_\_ the foregoing plat was approved by the Board of County Commissioners of Brevard County, Florida.

Chairman of the Board  
ATTEST: \_\_\_\_\_

Clerk of the Board  
Approved \_\_\_\_\_ County Engineer

**CERTIFICATE OF APPROVAL BY PLANNING AND ZONING COMMISSION**

THIS IS TO CERTIFY, That on \_\_\_\_\_ the Zoning Commission of the above \_\_\_\_\_ approved the foregoing plat.  
Planning and Zoning Director

**CERTIFICATE OF CLERK**

I HEREBY CERTIFY, That I have examined the foregoing plat and find that it complies in form with all the requirements of Chapter 177, Florida Statute, and was filed for record on AUGUST 10, 1988 at 2:12 P.M. File No. 844783  
R.C. Hamilton  
Clerk of the Circuit Court  
in and for Brevard County, Fla.