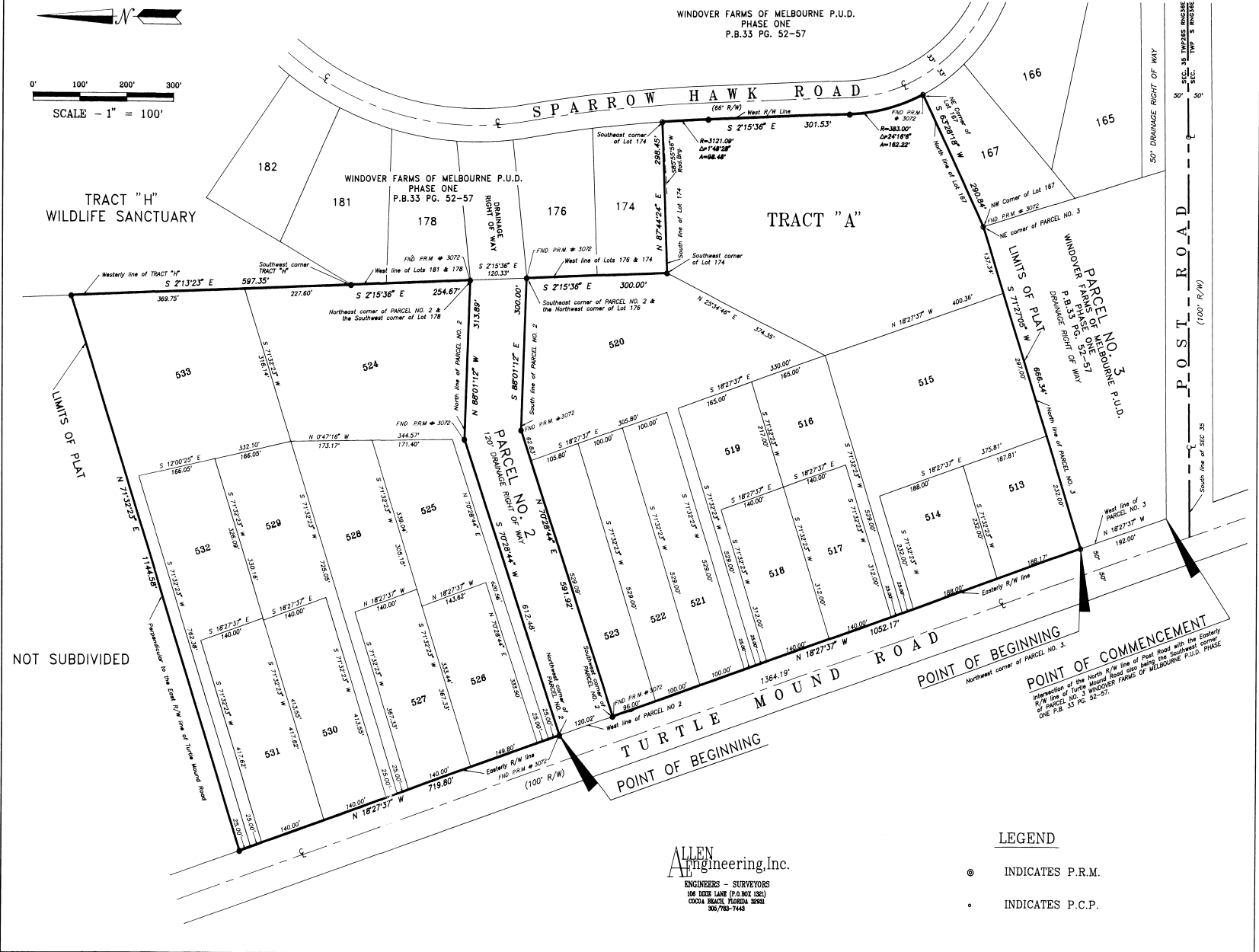
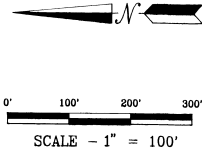


# WINDOVER FARMS OF MELBOURNE, P.U.D., PHASE THREE, UNIT ONE

PLAT BOOK 34 PAGE 88  
SHEET 2 OF 2  
SECTION 35, TWP.26S., RANGE 36E.



**ALLEN**  
Engineering Inc.  
ENGINEERS - SURVEYORS  
106 BEEBE LANE (P.O. BOX 1282)  
COOLA SPRING, MISSOURI 65024  
365/783-7443

- LEGEND**
- INDICATES P.R.M.
  - INDICATES P.C.P.