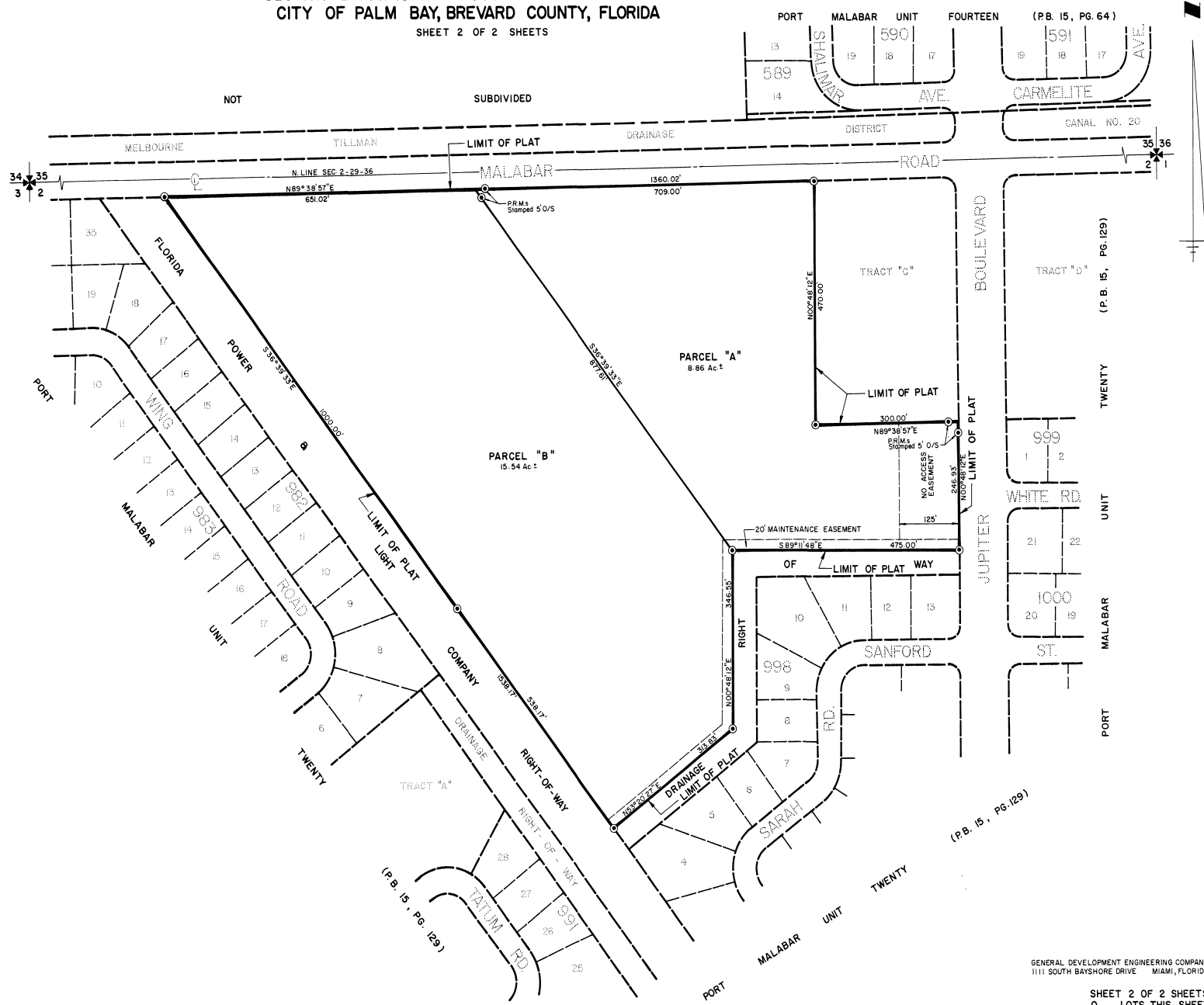
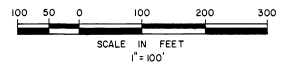


34-53

# FIRST REPLAT IN PORT MALABAR UNIT TWENTY

PLAT BOOK 34  
AND PAGE 53

ALL OF TRACT "B" OF PORT MALABAR UNIT TWENTY (P.B. 15, PG. 129)  
SECTION 2 TOWNSHIP 29 SOUTH RANGE 36 EAST  
CITY OF PALM BAY, BREVARD COUNTY, FLORIDA  
SHEET 2 OF 2 SHEETS



CALCULATED BY NF  
DRAWN BY JEB  
CHECKED BY NF  
APPROVED BY \_\_\_\_\_

GENERAL DEVELOPMENT ENGINEERING COMPANY  
1111 SOUTH BAYSHORE DRIVE MIAMI, FLORIDA

SHEET 2 OF 2 SHEETS  
0 LOTS THIS SHEET

PM 20R1