

THE CLOISTERS

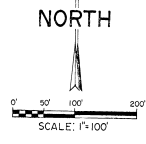
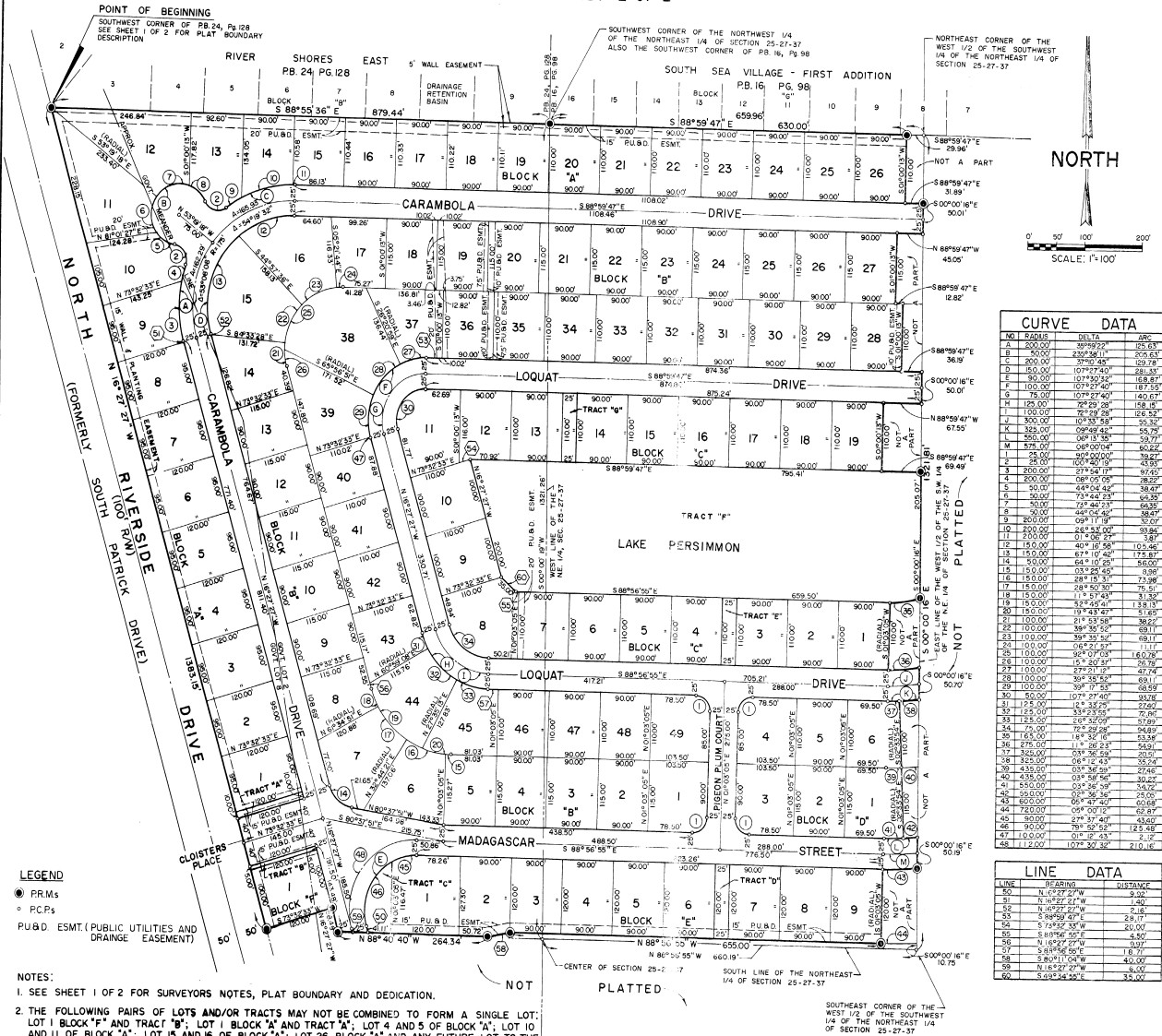
PHASE I

A SUBDIVISION IN FRACTIONAL SECTION 25, TOWNSHIP 27 SOUTH, RANGE 37 EAST
BREVARD COUNTY, FLORIDA

SHEET 2 OF 2

PLAT BOOK 34 PAGE 43

SHEET 2 OF 2
SECTION 25 TWP. 27 S., RANGE 37 E.



CURVE DATA			
NO.	RADIUS	DELTA	ARC
A	200.00	38°59'47"	25.63
B	50.00	28°58'11"	27.63
C	200.00	37°40'40"	59.78
D	150.00	107°52'32"	155.87
E	90.00	107°52'32"	140.07
F	100.00	107°22'40"	158.35
G	100.00	107°22'40"	158.35
H	125.00	28°23'28"	158.15
I	100.00	76°09'58"	106.52
J	300.00	10°33'58"	55.32
K	225.00	08°09'42"	55.75
L	250.00	08°13'52"	59.77
M	375.00	08°00'04"	60.82
N	25.00	100°42'13"	38.27
O	25.00	100°42'13"	43.95
P	200.00	27°54'19"	97.65
Q	200.00	08°05'05"	28.22
R	50.00	48°16'48"	28.47
S	50.00	73°44'28"	60.35
T	50.00	72°44'23"	66.35
U	50.00	44°13'46"	28.47
V	200.00	09°11'19"	37.07
W	200.00	24°43'07"	93.84
X	210.00	01°40'22"	3.87
Y	150.00	40°15'58"	93.84
Z	150.00	67°10'40"	175.87
AA	150.00	64°10'20"	166.00
AB	150.00	03°24'40"	6.98
AC	150.00	28°15'31"	73.98
AD	150.00	24°50'00"	75.50
AE	150.00	11°57'53"	31.53
AF	150.00	19°43'43"	57.65
AG	100.00	21°03'58"	36.22
AH	100.00	38°30'35"	69.11
AI	100.00	38°35'52"	69.11
AJ	100.00	10°00'00"	11.11
AK	100.00	88°07'03"	160.78
AL	100.00	15°50'34"	34.69
AM	100.00	27°21'12"	47.74
AN	100.00	38°35'58"	69.11
AO	100.00	38°17'35"	68.59
AP	50.00	107°27'40"	93.78
AQ	125.00	14°43'25"	22.60
AR	125.00	33°23'25"	72.84
AS	125.00	108°32'00"	137.86
AT	75.00	72°09'28"	94.89
AU	75.00	11°26'53"	25.00
AV	275.00	03°56'24"	20.51
AW	325.00	03°56'24"	25.74
AX	435.00	03°56'24"	27.46
AY	435.00	03°56'24"	34.22
AZ	550.00	03°56'24"	34.22
BA	600.00	03°56'24"	60.69
BB	600.00	03°56'24"	62.87
BC	90.00	78°52'52"	123.48
BD	12.00	107°22'32"	2.17
BE	12.00	107°22'32"	210.16

LINE DATA		
LINE	BEARING	DISTANCE
10	N. 0°00'00" W.	0.00
11	N. 88°59'47" W.	2.40
12	N. 0°00'00" W.	2.40
13	S. 88°59'47" E.	2.40
14	S. 0°00'00" W.	2.40
15	N. 88°59'47" E.	2.40
16	N. 0°00'00" W.	2.40
17	N. 88°59'47" W.	2.40
18	N. 0°00'00" W.	2.40
19	S. 88°59'47" E.	2.40
20	S. 0°00'00" W.	2.40

LEGEND
 ● PRMs
 ○ P.C.Ps
 P.U.B. ESMT (PUBLIC UTILITIES AND DRAINAGE EASEMENT)

NOTES:
 1. SEE SHEET 1 OF 2 FOR SURVEYORS NOTES, PLAT BOUNDARY AND DEDICATION.
 2. THE FOLLOWING PAIRS OF LOTS AND/OR TRACTS MAY NOT BE COMBINED TO FORM A SINGLE LOT:
 LOT 1 BLOCK 'F' AND TRACT 'B'; LOT 1 BLOCK 'A' AND TRACT 'A'; LOT 4 AND 5 OF BLOCK 'A'; LOT 10
 AND 11 OF BLOCK 'A'; LOT 15 AND 16 OF BLOCK 'A'; LOT 26 BLOCK 'A' AND ANY FUTURE LOT TO THE
 EAST; LOT 6 AND 7 OF BLOCK 'B'; LOT 10 AND 11 OF BLOCK 'B'; LOT 15 AND 16 OF BLOCK 'B'; LOT 19
 AND 20 OF BLOCK 'B'; LOT 26 AND 27 OF BLOCK 'B'; LOT 27 BLOCK 'B' AND ANY FUTURE LOT TO THE
 EAST; LOT 6 AND 7 OF BLOCK 'B'; LOT 10 AND 11 OF BLOCK 'B'; LOT 15 AND 16 OF BLOCK 'B'; LOT 19
 AND 20 OF BLOCK 'B'; LOT 26 AND 27 OF BLOCK 'B'; LOT 27 BLOCK 'B' AND ANY FUTURE LOT TO THE
 EAST; LOT 28 BLOCK 'B' AND ANY FUTURE LOT TO THE EAST; LOT 28 BLOCK 'B' AND ANY FUTURE LOT TO THE EAST;
 LOT 7 AND 8 OF BLOCK 'C'; LOT 9 AND 10 OF BLOCK 'C'; LOT 12 AND 13 OF BLOCK 'C'; LOT 19 BLOCK 'C' AND ANY FUTURE LOT TO THE EAST; LOT 1 BLOCK 'D' AND ANY FUTURE LOT
 TO THE EAST; LOT 6 BLOCK 'D' AND ANY FUTURE LOT TO THE EAST.

NOTE:
 THERE ARE NOT RECORDED RESTRICTIONS THAT ARE NOT RECORDED ON THIS PLAT THAT MAY BE FOUND IN THE PUBLIC RECORDS OF THIS COUNTY.

Prepared by: ALLEN ENGINEERING, INC.
 106 DIXIE LANE
 COCOA BEACH, FLORIDA
 32931

34-44