

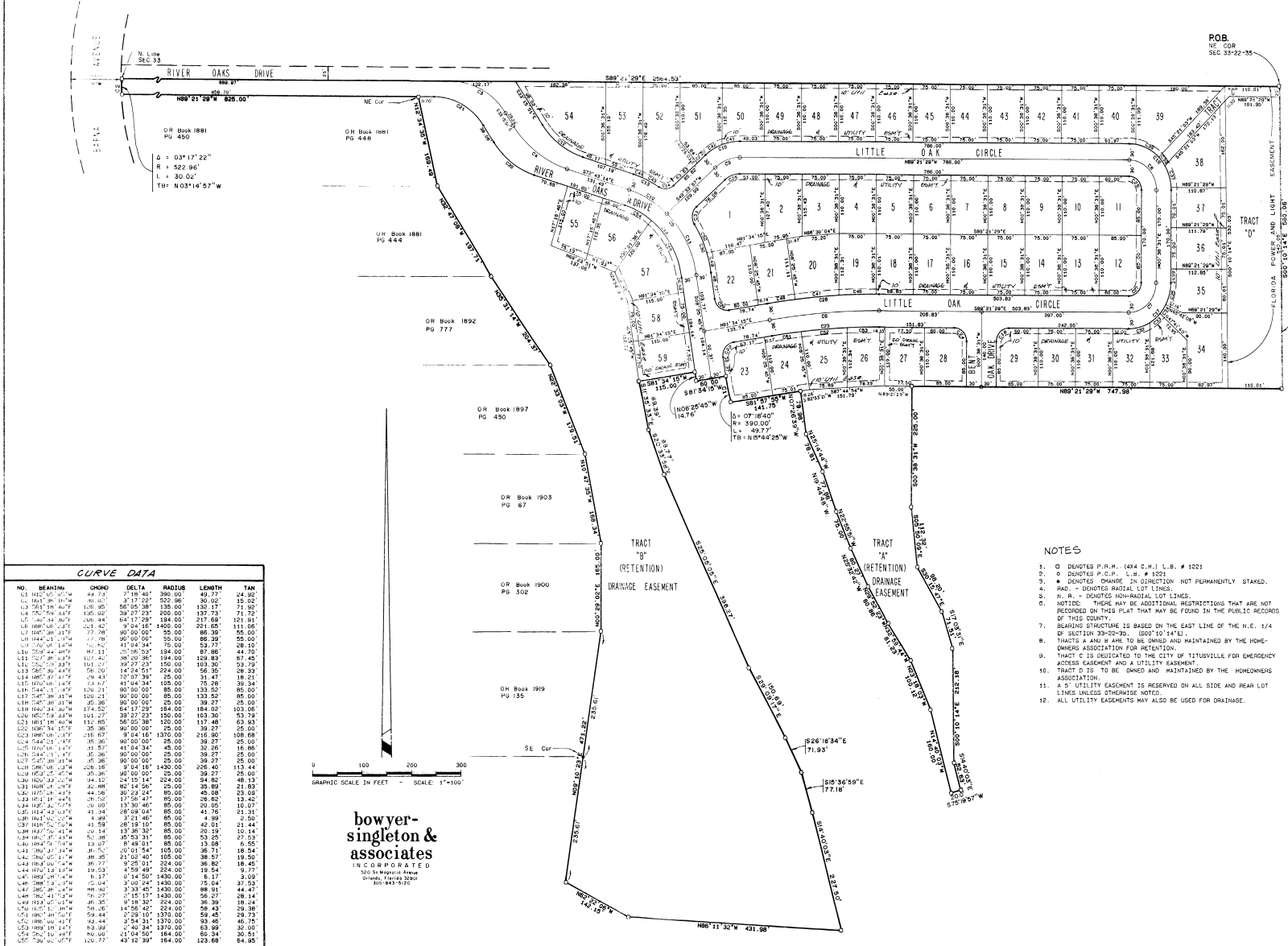
THE OAKTRAILS AT MEADOWRIDGE

SECTION 33, TOWNSHIP 22 SOUTH, RANGE 35 EAST
CITY OF TITUSVILLE, BREVARD COUNTY, FLORIDA

PLAT BOOK 34 PAGE 11

SHEET 2 of 2

SECTION 33 TWP. 22 S., RANGE 35 E.



Q = 03°17'22"
R = 522.96'
L = 30.02'
TH = N03°14'57"W

POB.
NE COR
SEC 33-22-35

NO.	BEARING	CHORD	DELTA	RADIUS	LENGTH	TAN
L1	N42°00'00"W	44.73	7°18'40"	396.00	43.77	24.82
L2	N42°00'00"W	46.01	9°17'22"	352.96	50.65	23.02
L3	N42°00'00"W	136.95	56°05'38"	136.00	130.17	71.90
L4	N42°00'00"W	135.00	20°07'29"	350.00	137.73	21.73
L5	N42°00'00"W	140.44	64°17'29"	184.00	217.69	121.81
L6	N42°00'00"W	142.42	90°04'16"	140.00	251.65	111.05
L7	N42°00'00"W	77.78	90°00'00"	55.00	86.39	55.00
L8	N42°00'00"W	77.78	90°00'00"	55.00	86.39	55.00
L9	N42°00'00"W	77.78	90°00'00"	55.00	86.39	55.00
L10	N42°00'00"W	77.78	90°00'00"	55.00	86.39	55.00
L11	N42°00'00"W	77.78	90°00'00"	55.00	86.39	55.00
L12	N42°00'00"W	77.78	90°00'00"	55.00	86.39	55.00
L13	N42°00'00"W	77.78	90°00'00"	55.00	86.39	55.00
L14	N42°00'00"W	77.78	90°00'00"	55.00	86.39	55.00
L15	N42°00'00"W	77.78	90°00'00"	55.00	86.39	55.00
L16	N42°00'00"W	77.78	90°00'00"	55.00	86.39	55.00
L17	N42°00'00"W	77.78	90°00'00"	55.00	86.39	55.00
L18	N42°00'00"W	77.78	90°00'00"	55.00	86.39	55.00
L19	N42°00'00"W	77.78	90°00'00"	55.00	86.39	55.00
L20	N42°00'00"W	77.78	90°00'00"	55.00	86.39	55.00
L21	N42°00'00"W	77.78	90°00'00"	55.00	86.39	55.00
L22	N42°00'00"W	77.78	90°00'00"	55.00	86.39	55.00
L23	N42°00'00"W	77.78	90°00'00"	55.00	86.39	55.00
L24	N42°00'00"W	77.78	90°00'00"	55.00	86.39	55.00
L25	N42°00'00"W	77.78	90°00'00"	55.00	86.39	55.00
L26	N42°00'00"W	77.78	90°00'00"	55.00	86.39	55.00
L27	N42°00'00"W	77.78	90°00'00"	55.00	86.39	55.00
L28	N42°00'00"W	77.78	90°00'00"	55.00	86.39	55.00
L29	N42°00'00"W	77.78	90°00'00"	55.00	86.39	55.00
L30	N42°00'00"W	77.78	90°00'00"	55.00	86.39	55.00
L31	N42°00'00"W	77.78	90°00'00"	55.00	86.39	55.00
L32	N42°00'00"W	77.78	90°00'00"	55.00	86.39	55.00
L33	N42°00'00"W	77.78	90°00'00"	55.00	86.39	55.00
L34	N42°00'00"W	77.78	90°00'00"	55.00	86.39	55.00
L35	N42°00'00"W	77.78	90°00'00"	55.00	86.39	55.00
L36	N42°00'00"W	77.78	90°00'00"	55.00	86.39	55.00
L37	N42°00'00"W	77.78	90°00'00"	55.00	86.39	55.00
L38	N42°00'00"W	77.78	90°00'00"	55.00	86.39	55.00
L39	N42°00'00"W	77.78	90°00'00"	55.00	86.39	55.00
L40	N42°00'00"W	77.78	90°00'00"	55.00	86.39	55.00
L41	N42°00'00"W	77.78	90°00'00"	55.00	86.39	55.00
L42	N42°00'00"W	77.78	90°00'00"	55.00	86.39	55.00
L43	N42°00'00"W	77.78	90°00'00"	55.00	86.39	55.00
L44	N42°00'00"W	77.78	90°00'00"	55.00	86.39	55.00
L45	N42°00'00"W	77.78	90°00'00"	55.00	86.39	55.00
L46	N42°00'00"W	77.78	90°00'00"	55.00	86.39	55.00
L47	N42°00'00"W	77.78	90°00'00"	55.00	86.39	55.00
L48	N42°00'00"W	77.78	90°00'00"	55.00	86.39	55.00
L49	N42°00'00"W	77.78	90°00'00"	55.00	86.39	55.00
L50	N42°00'00"W	77.78	90°00'00"	55.00	86.39	55.00
L51	N42°00'00"W	77.78	90°00'00"	55.00	86.39	55.00
L52	N42°00'00"W	77.78	90°00'00"	55.00	86.39	55.00
L53	N42°00'00"W	77.78	90°00'00"	55.00	86.39	55.00
L54	N42°00'00"W	77.78	90°00'00"	55.00	86.39	55.00
L55	N42°00'00"W	77.78	90°00'00"	55.00	86.39	55.00

- NOTES**
1. O DENOTES P.P.M. (404 C.M.) L.B. # 1021
 2. S DENOTES P.C.P. L.B. # 1021
 3. * DENOTES CHANGE IN DIRECTION NOT PERMANENTLY STAKED.
 4. RAD. - DENOTES RADIAL LOT LINES.
 5. N. R. - DENOTES NON-RADIAL LOT LINES.
 6. NOTICED: THERE MAY BE ADDITIONAL RESTRICTIONS THAT ARE NOT RECORDED ON THIS PLAT THAT MAY BE FOUND IN THE PUBLIC RECORDS OF THIS COUNTY.
 7. SURVEYING STRUCTURE IS BASED ON THE EAST LINE OF THE N.E. 1/4 OF SECTION 33-22-35.
 8. TRACTS A AND B ARE TO BE OWNED AND MAINTAINED BY THE HOMEOWNERS ASSOCIATION FOR RETENTION.
 9. TRACT C IS DEDICATED TO THE CITY OF TITUSVILLE FOR EMERGENCY ACCESS EASEMENT AND A UTILITY EASEMENT.
 10. TRACT D IS TO BE OWNED AND MAINTAINED BY THE HOMEOWNERS ASSOCIATION.
 11. A 5' UTILITY EASEMENT IS RESERVED ON ALL SIDE AND REAR LOT LINES UNLESS OTHERWISE NOTED.
 12. ALL UTILITY EASEMENTS MAY ALSO BE USED FOR DRAINAGE.

bower-singleton & associates
INCORPORATED
120 S. W. 10th Avenue
Orlando, Florida 32801
Tel: 407-520-1200