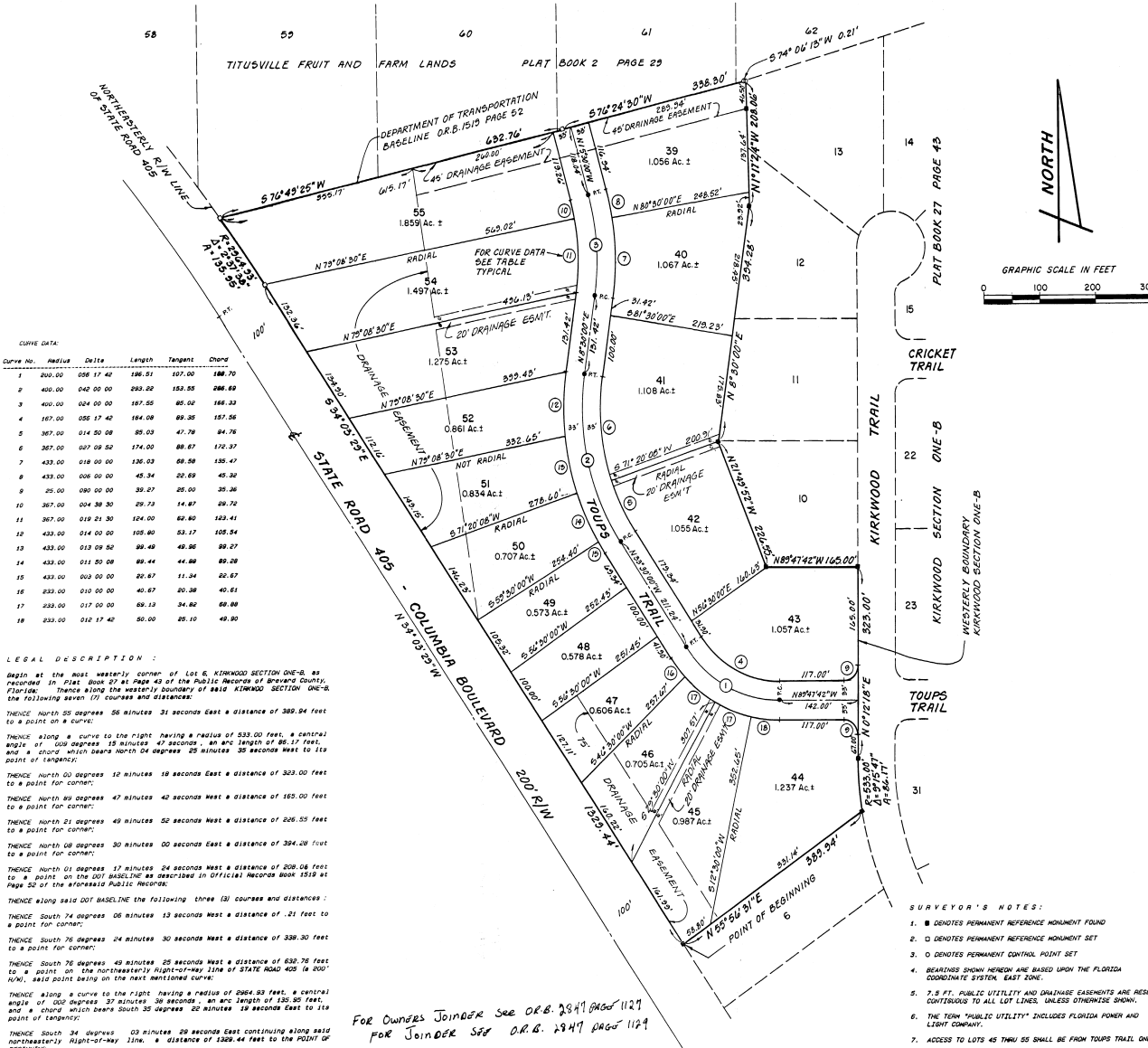


CATHEDRAL ESTATES

BREVARD COUNTY, FLORIDA

A REPLAT OF A PORTION OF LOTS 59, 60, 61, 62, 67, 68, 69, 70, 92, 93, AND 94, SECTION 29, TOWNSHIP 22 SOUTH, RANGE 35 EAST, ALL ACCORDING TO THE PLAT OF TITUSVILLE FRUIT AND FARM LANDS COMPANY SUBDIVISION, AS RECORDED IN PLAT BOOK 2 AT PAGE 29 OF THE PUBLIC RECORDS OF BREVARD COUNTY, FLORIDA. TOGETHER WITH A PART OF A VACATED UN-NAMED 20' R/W AS SHOWN ON SAID PLAT.



CURVE DATA

Curve No.	Radius	Delta	Length	Tangent	Chord
1	200.00	108° 17' 40"	186.51	107.00	186.70
2	400.00	104° 00' 00"	283.29	163.85	286.63
3	400.00	104° 00' 00"	187.55	85.00	187.23
4	107.00	108° 17' 40"	184.08	89.35	187.56
5	367.00	114° 50' 08"	35.03	47.78	54.76
6	367.00	107° 08' 30"	174.00	88.67	172.37
7	433.00	118° 00' 00"	136.03	88.58	135.47
8	433.00	106° 00' 00"	45.34	20.69	45.36
9	25.00	090° 00' 00"	35.67	25.00	35.36
10	367.00	104° 30' 30"	29.73	14.87	29.70
11	367.00	118° 21' 30"	104.00	62.40	123.41
12	433.00	114° 00' 00"	105.80	53.17	105.54
13	433.00	113° 09' 52"	96.49	49.96	96.27
14	433.00	111° 50' 08"	89.44	44.88	89.28
15	433.00	109° 00' 00"	20.67	11.34	20.67
16	233.00	110° 00' 00"	40.67	20.38	40.61
17	233.00	117° 00' 00"	69.13	34.82	68.80
18	233.00	112° 17' 40"	80.00	25.10	49.90

LEGAL DESCRIPTION:

Begin at the most westerly corner of Lot 6, KIRKWOOD SECTION ONE-B, as recorded in Plat Book 27 at Page 43 of the Public Records of Brevard County, Florida. Thence along the westerly boundary of said KIRKWOOD SECTION ONE-B the following seven (7) courses and distances:

THENCE North 55 degrees 56 minutes 31 seconds East a distance of 389.94 feet to a point on a curve;

THENCE along a curve to the right having a radius of 533.00 feet, a central angle of 100 degrees 19 minutes 47 seconds, an arc length of 86.11 feet, and a chord which bears North 04 degrees 58 minutes 35 seconds West to its point of beginning;

THENCE North 00 degrees 10 minutes 18 seconds East a distance of 323.00 feet to a point for corner;

THENCE North 89 degrees 47 minutes 42 seconds West a distance of 160.00 feet to a point for corner;

THENCE North 21 degrees 49 minutes 52 seconds West a distance of 266.55 feet to a point for corner;

THENCE North 08 degrees 30 minutes 00 seconds East a distance of 394.28 feet to a point for corner;

THENCE North 01 degrees 17 minutes 24 seconds West a distance of 208.08 feet to a point on the 200' BASELINE as described in Official Record Book 1518 at Page 52 of the aforesaid Public Records;

THENCE along said 200' BASELINE the following three (3) courses and distances:

THENCE South 74 degrees 06 minutes 13 seconds West a distance of .21 feet to a point for corner;

THENCE South 76 degrees 24 minutes 30 seconds East a distance of 338.30 feet to a point for corner;

THENCE South 76 degrees 40 minutes 25 seconds West a distance of 630.76 feet to a point on the northeasterly right-of-way line of STATE ROAD 405 (a 200' R/W), said point being on the next mentioned curve;

THENCE along a curve to the right having a radius of 686.92 feet, a central angle of 100 degrees 37 minutes 38 seconds, an arc length of 135.56 feet, and a chord which bears South 35 degrees 22 minutes 19 seconds East to its point of beginning;

THENCE South 34 degrees 03 minutes 29 seconds East continuing along said northeasterly right-of-way line, a distance of 1329.44 feet to the POINT OF BEGINNING.

Containing 38.98 acres more or less.

FOR OWNERS JOINDER SEE O.R.B. 2847 PAGE 1127
 FOR JOINDER SEE O.R.B. 2847 PAGE 1124

FOR JOINDER IN DEDICATION SEE O.R.B. 2847 PAGE 1131
 FOR DECLARATION OF RESTRICTIONS SEE O.R.B. 2847 PAGE 1133

NOTICE: There may be additional restrictions that are not recorded on this plat. One may be found in the public records of this county.

prepared by: LOYS WARD AND COMPANY
 TITUSVILLE, FLORIDA

PLAT BOOK 34
 AND PAGE 5

DEDICATION
 KNOW ALL MEN BY THESE PRESENTS That the Corporation named below, being the owner in fee simple of the lands described herein to be known as: CATHEDRAL ESTATES

hereby dedicates said lands and plat for the uses and purposes therein expressed and dedicates the streets, alleys, thoroughfares, parks, canals and drainage easements shown hereon to the perpetual use of the public, and
 IN WITNESS WHEREOF, has caused these presents to be signed and attested to by the officer named below and its corporate seal to be affixed hereto on September 25, 1986

Cathedral Holdings, Inc.
 2480 Presidential Way
 West Palm Beach, Florida 33405
 Signed and sealed in the presence of

William Wilgton
 Vice President
John N. Collette
Stephen J. Paul

STATE OF FLORIDA COUNTY OF BREVARD
 THIS IS TO CERTIFY, That on September 25, 1986 before me, an officer duly authorized to take acknowledgments in the State and County aforesaid, personally appeared _____

IN WITNESS WHEREOF, I have hereto set my hand and seal on the above date.

John N. Collette
 NOTARY PUBLIC

My Commission Expires September 23, 1989

CERTIFICATE OF SURVEYOR

KNOW ALL MEN BY THESE PRESENTS, That the undersigned, being a licensed and registered land surveyor, does hereby certify that on October 17, 1984, he completed the survey of the lands as shown in the foregoing plat; that said plat is a correct representation of the lands therein described and plotted; that permanent reference monuments have been placed as shown thereon as required by Chapter 177, Florida Statutes; and that said land is located in Brevard County, Florida. Dated: July 15, 1986

Registration No. 2396

CERTIFICATE OF APPROVAL BY MUNICIPALITY

THIS IS TO CERTIFY, That on _____ the _____ approved the foregoing plat.

ATTEST: _____ MAYOR
 _____ CITY CLERK

CERTIFICATE OF ACCEPTANCE OF DEDICATION BY BOARD OF COUNTY COMMISSIONERS

THIS IS TO CERTIFY That the Board of County Commissioners hereby accepts of roads, streets, alleys, thoroughfares, parks, canals, drainage easements, utility easements, lakes, pathways, open space and other rights of way, easements and areas dedicated for public use on this plat.

ATTEST: *Andrew W. Mingo*
 Chairman of the Board

CERTIFICATE OF APPROVAL BY BOARD OF COUNTY COMMISSIONERS

THIS IS TO CERTIFY, That on August 4, 1987 the foregoing plat was approved by the Board of County Commissioners of Brevard County, Florida.

ATTEST: *R.C. Wintstead Jr.*
 Clerk of the Board

Approved: _____ County Engineer

CERTIFICATE OF APPROVAL BY PLANNING AND ZONING COMMISSION

THIS IS TO CERTIFY, That on August 14, 1987 the Zoning Commission of Brevard County approved the foregoing plat.

Approved: _____ Planning and Zoning Director

CERTIFICATE OF CLERK

I HEREBY CERTIFY, That I have examined the foregoing plat and find that it complies in form with all the requirements of Chapter 177, Florida Statutes, and was filed for record on 10-7-1987 at 2:29 PM. File No. 43810

ATTEST: *R.C. Wintstead Jr.*
 Clerk of the Circuit Court and for Brevard County, Fla.