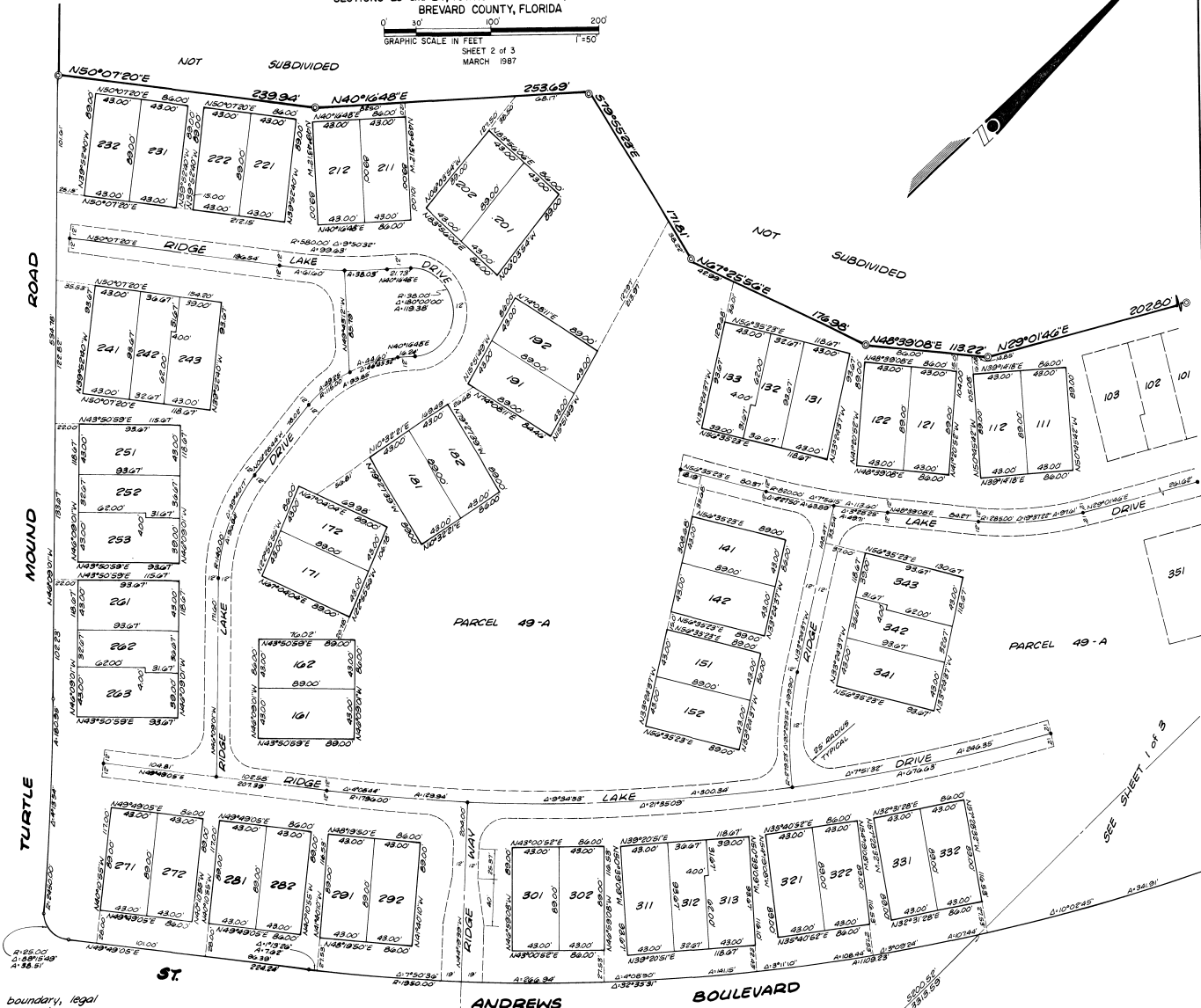
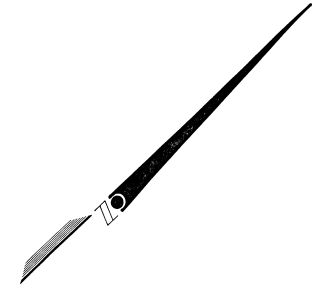


QUAIL RIDGE AT SUNTREE
SUNTREE PLANNED UNIT DEVELOPMENT STAGE 5, TRACT 49
A SUBDIVISION OF A PORTION OF
SECTIONS 23 AND 24, TOWNSHIP 26 SOUTH, RANGE 36 EAST
BREVARD COUNTY, FLORIDA

GRAPHIC SCALE IN FEET
SHEET 2 OF 3
MARCH 1987



NOTES:

1. See Sheet 3 of 3 for overall plot boundary, legal description, surveyors notes and general notes.
2. All lot lines are parallel with or perpendicular to the bearings shown.

SEE SHEET 3 OF 3

SEE SHEET 1 OF 3

PHD. 4 x 4 CM W/IMP

Stotler Stagg & Associates
8640 Astronaut Boulevard
Cape Canaveral, Florida 32920

DRAWING NUMBER
33-80

DRAWING NUMBER

DRAWING NUMBER

DRAWING NUMBER