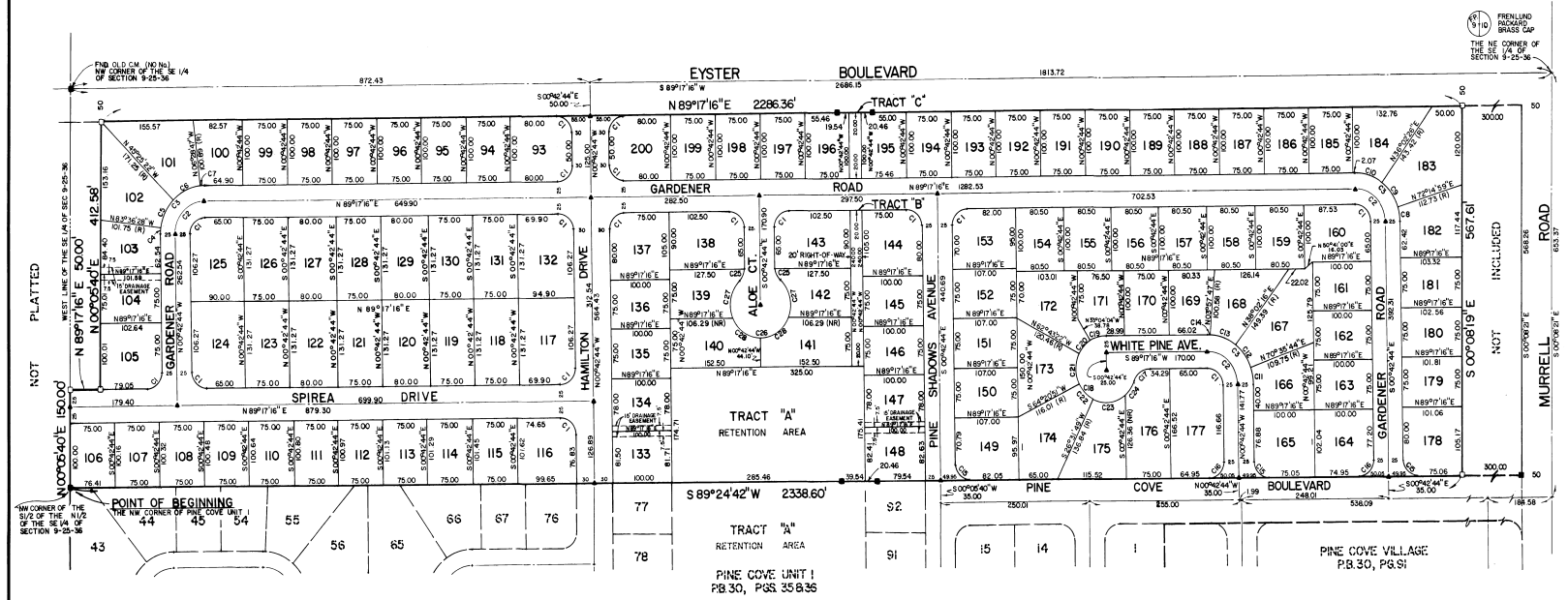


# PINE COVE UNIT 2



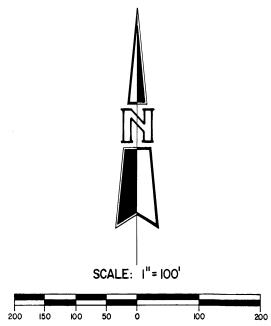
NOT PLATTED  
WEST LINE OF THE SE 1/4 OF SEC. 28-36  
N 89°17'16" E 5000'  
N 00°05'40" E 412.56'

PRELIMINARY  
BRASS CAP  
THE NE CORNER OF  
THE SE 1/4 OF  
SECTION 9-25-36

**CURVE DATA**

DELTA	RADIUS	ASC	TANGENT	CHORD
1. 90°00'00"	25.00	39.27	23.00	33.36
2. 90°00'00"	50.00	78.54	50.00	70.71
3. 90°00'00"	75.00	117.81	100.00	108.07
4. 07°06'18"	75.00	9.30	4.86	9.29
5. 38°11'07"	75.00	49.98	25.96	49.06
6. 38°56'30"	75.00	50.98	26.52	50.00
7. 09°46'03"	75.00	7.55	3.78	7.55
8. 17°50'17"	75.00	22.30	11.23	22.22
9. 36°12'33"	75.00	47.40	24.52	46.61
10. 36°40'10"	75.00	48.11	24.92	47.29
11. 18°41'38"	75.00	24.47	12.34	23.36
12. 35°33'28"	75.00	42.62	21.90	42.06
13. 34°04'29"	75.00	44.60	22.98	43.95
14. 04°40'31"	75.00	6.12	3.06	6.12
15. 89°26'34"	25.00	39.22	24.95	35.32
16. 90°07'36"	25.00	39.32	25.05	35.39
17. 70°31'44"	25.00	30.77	17.68	28.87
18. 250°31'44"	50.00	218.63	—	81.65
19. 30°21'00"	50.00	28.24	14.51	27.86
20. 29°39'18"	50.00	25.88	13.24	25.59
21. 52°25'47"	50.00	46.19	24.89	44.57
22. 37°49'02"	50.00	33.00	17.15	32.41
23. 64°06'44"	50.00	55.95	31.31	53.08
24. 33°50'30"	50.00	29.57	15.12	28.90
25. 46°11'23"	25.00	21.03	11.18	20.41
26. 276°22'46"	50.00	241.19	—	66.67
27. 70°48'45"	50.00	81.56	38.43	59.62
28. 67°32'40"	50.00	56.94	33.44	55.96

- GENERAL NOTES & LEGEND**
- BEARINGS ARE BASED ON PINE COVE UNIT 1, P.B. 30, PGS. 35 B, 36, OF THE PUBLIC RECORDS OF BREVARD COUNTY, FLORIDA.
  - DENOTES A 4"x4" CONCRETE MONUMENT SET AS A PERMANENT REFERENCE MONUMENT (PERM.) L.S. NO. 3970.
  - △ DENOTES A NAIL AND CAP SET AS A PERMANENT CONTROL POINT (CP). L.S. NO. 3970.
  - (R) DENOTES A LINE RADIAL TO CURVE.
  - (NR) DENOTES A LINE NOT RADIAL TO CURVE.
  - DENOTES A FOUND 4"x4" CONCRETE MONUMENT L.S. NO. 3970.
  - CURVES ARE ASSIGNED A CURVE NUMBER (C#), AND LISTED IN THE CURVE DATA TABLE.
  - ALL DIMENSIONS ARE ROUNDED TO NEAREST 0.01' OR 0.00'01" VERTICAL ACCESS RIGHTS OF LOTS 93-101 AND 183-200 TO EYSTER BOULEVARD AND LOTS 149, 184, 185 AND 174-178 TO PINE COVE BOULEVARD, ARE HEREBY DEDICATED TO THE CITY OF ROCKLEDGE, BREVARD COUNTY, FLORIDA.
  - A 5.00' UTILITY EASEMENT IS DEDICATED TO THE CITY OF ROCKLEDGE ON THE REAR AND SIDE ADJACENT LINES OF ALL LOTS EXCEPT THOSE LOT LINES ADJACENT TO STREET RIGHT-OF-WAYS.



Plat prepared by,  
HOEPNER & ASSOCIATES  
Civil Engineering / Land Surveying  
3346 Curry Ford Road  
Orlando, Florida 32806  
Phone: (305) 898-6388