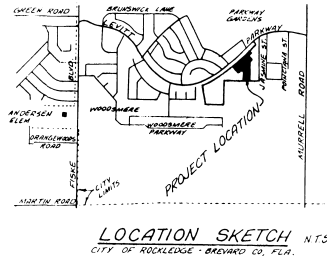


BUCKINGHAM AT LEVITT PARK

SECTION SEVEN - PHASE 2

A PORTION OF THE NORTH 1/2 OF SECTION 16, TOWNSHIP 25 SOUTH, RANGE 36 EAST, IN THE CITY OF ROCKLEDGE, BREVARD COUNTY, FLORIDA
PREPARED BY: PARAMOUNT ENGINEERING GROUP AUGUST, 1986

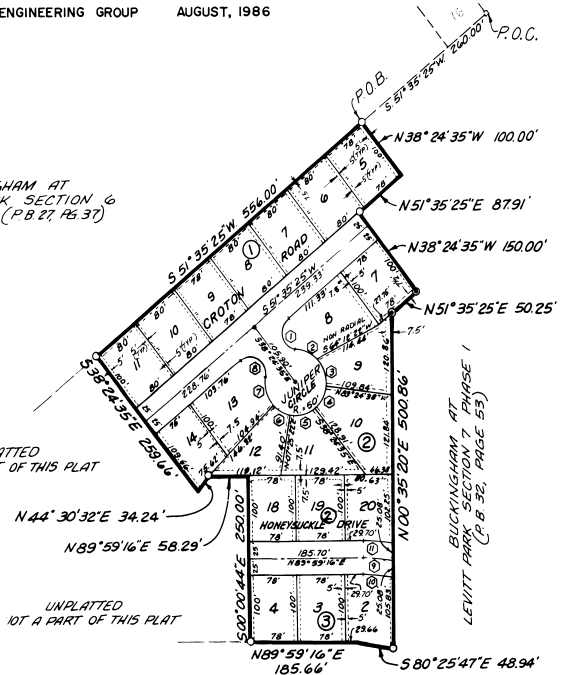


LEGAL DESCRIPTION

A PARCEL OF LAND LYING IN SECTION 16, TOWNSHIP 25 SOUTH, RANGE 36 EAST, BREVARD COUNTY, FLORIDA, MORE PARTICULARLY DESCRIBED AS FOLLOWS:
COMMENCING AT THE SOUTHEASTERLY CORNER OF LOT 16, BUCKINGHAM AT LEVITT PARK SECTION SIX, PART ONE, AS RECORDED IN PLAT BOOK 27, PAGE 37, PUBLIC RECORDS OF BREVARD COUNTY, FLORIDA, THENCE SOUTH 51° 35' 25" WEST ALONG THE SOUTH LINE OF SAID BUCKINGHAM AT LEVITT PARK, SECTION 6, PART 1, (BEARINGS BASED ON SAID PLAT), A DISTANCE OF 260.00 FEET TO THE POINT OF BEGINNING; THENCE CONTINUE ALONG THE SOUTH LINE OF SAID BUCKINGHAM AT LEVITT PARK SECTION SIX PART ONE, SOUTH 51° 35' 25" WEST, A DISTANCE OF 556.00 FEET; THENCE SOUTH 38° 24' 35" EAST, A DISTANCE OF 259.66 FEET; THENCE NORTH 44° 30' 32" EAST, A DISTANCE OF 34.24 FEET; THENCE NORTH 89° 59' 16" EAST A DISTANCE OF 58.29 FEET; THENCE SOUTH 00° 00' 44" EAST, A DISTANCE OF 250.00 FEET TO A POINT OF INTERSECTION WITH THE NORTH LINE OF A 50.00 FOOT DRAINAGE RIGHT OF WAY, BEING PART OF THE PLAT OF BUCKINGHAM AT LEVITT PARK, SECTION SEVEN, PHASE 1, AS RECORDED IN PLAT BOOK 32, PAGE 53, PUBLIC RECORDS OF BREVARD COUNTY FLORIDA; THENCE ALONG THE NORTH LINE OF SAID DRAINAGE RIGHT OF WAY, NORTH 89° 59' 16" EAST, A DISTANCE OF 185.66 FEET; THENCE CONTINUE ALONG SAID NORTH LINE SOUTH 80° 25' 47" EAST, A DISTANCE OF 48.94 FEET TO A POINT OF THE WEST LINE OF BUCKINGHAM AT LEVITT PARK, SECTION SEVEN, PHASE 1; THENCE FOR THE NEXT FIVE COURSES CONTINUE ALONG SAID WEST LINE NORTH 00° 35' 20" EAST, A DISTANCE OF 500.86 FEET; THENCE NORTH 51° 38' 25" EAST, A DISTANCE OF 50.25 FEET; THENCE NORTH 38° 24' 35" WEST, A DISTANCE OF 150.00 FEET; THENCE NORTH 51° 35' 25" EAST, A DISTANCE OF 87.91 FEET; THENCE NORTH 38° 24' 35" WEST, A DISTANCE OF 100.00 FEET TO THE POINT OF BEGINNING.
CONTAINING 5.095 ACRES MORE OR LESS.

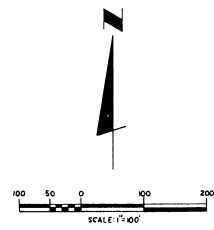
BUCKINGHAM AT LEVITT PARK SECTION 6 PART 1 (P.B. 27, PG. 37)

UNPLATTED NOT A PART OF THIS PLAT



UNPLATTED NOT A PART OF THIS PLAT

BUCKINGHAM AT LEVITT PARK SECTION 7 PHASE 1 (P.B. 32, PG. 53)



CURVE DATA CHART

1	R=25.00' Δ=138°11'23"	L=60.30'
2	R=50.00' Δ=41°24'58"	L=36.14'
3	R=50.00' Δ=51°46'22"	L=45.18'
4	R=50.00' Δ=45°00'00"	L=39.27'
5	R=50.00' Δ=45°50'00"	L=40.00'
6	R=50.00' Δ=37°05'10"	L=32.36'
7	R=50.00' Δ=55°16'13"	L=48.23'
8	R=25.00' Δ=138°11'23"	L=60.30'
9	R=550.00' Δ=05°10'22"	L=49.66'
10	R=525.00' Δ=05°23'27"	L=49.40'
11	R=575.00' Δ=04°58'25"	L=49.91'

SURVEYOR'S NOTES

- PERMANENT CONTROL POINT
- 7.5' Wide easement for utility and drainage purposes on rear lot lines
- 5.0' Wide easement for utility and drainage purposes on each side of side lot lines
- Found permanent reference monument P.B.S. 1908
- Indicates set permanent reference monument
- Bearings based on Plat of Buckingham at Levitt Park, Section 6 Part 1 as recorded in P.B. 27, Pg. 37, Public Records of Brevard County, Florida
- Lot lines, where applicable, are radial unless otherwise noted.
- Building setback lines to conform to City Ordinances of Rockledge, Florida.

FOR JOINER SEE O.R.B. 2769 PAGE 1766

DEDICATION
KNOW ALL MEN BY THESE PRESENTS, That the End Partnership named below, being the owner in fee simple of the lands described in the plat of BUCKINGHAM AT LEVITT PARK SECTION SEVEN PHASE 2 hereby dedicates said lands and plat for the uses and purposes therein expressed and dedicates the streets, thoroughfares, drainage rights of way and easements shown hereon to the perpetual use of the public, and IN WITNESS WHEREOF, has caused these presents to be signed and attested to by the officers named below and whose corporate seals to be affixed hereon on 8-19-87

SWISS PINES LTD.
DOMINIC PARRIBATTI GENERAL PARTNER
ATTEST: ROY POLINARUCCI GENERAL PARTNER
WITNESS: *William R. Chiles*
WITNESS: *William R. Chiles*

STATE OF FLORIDA COUNTY OF BREVARD
THIS IS TO CERTIFY, That on 8-19-87 before me, an officer duly authorized to take acknowledgments in the State and County aforesaid, the official seal of said corporation is duly affixed thereto; and that the said Dedication is the act and deed of said corporation
The above named corporation incorporated under the laws of the State of Florida to me known to be the individuals and officers described in and who executed the foregoing Dedication and severally acknowledged the execution thereof to be their free act and deed as such officers thereunto duly authorized; that the official seal of said corporation is duly affixed thereto; and that the said Dedication is the act and deed of said corporation
IN WITNESS WHEREOF, I have hereto set my hand and seal on the above date
NOTARY PUBLIC *William R. Chiles*
My Commission Expires: *May 19, 1989* STATE SEAL

CERTIFICATE OF APPROVAL BY MUNICIPALITY
KNOW ALL MEN BY THESE PRESENTS, That the undersigned, being a licensed and registered land surveyor does hereby certify that on 8-19-87 he has completed the survey of the lands as shown in the foregoing plat; that said plat is a correct representation of the lands therein delineated; that permanent reference monuments have been placed as shown thereon as required by Chapter 129, Florida Statutes, and that said land is located in Brevard County, Florida Dated 01-19-87
William R. Chiles Registration No. 4051
THIS IS TO CERTIFY, That on *January 21, 1987* the City Council of the City of Rockledge, Florida, approved the foregoing plat.
WITNESS: *William R. Chiles* Mayor
WITNESS: *Ronald J. Hamilton* City Clerk

CERTIFICATE OF ACCEPTANCE OF DEDICATION BY BOARD OF COUNTY COMMISSIONERS
THIS IS TO CERTIFY, That the Board of County Commissioners hereby accept all roads, streets, alleys, thoroughfares, parks, canals, drainage easements, utility easements, lakes, pathways, storm drains and other rights of way, easements and areas dedicated for public use on this plat
Chairman of the Board
ATTEST: _____ Clerk of the Board

CERTIFICATE OF APPROVAL BY BOARD OF COUNTY COMMISSIONERS
THIS IS TO CERTIFY, That on _____ the foregoing plat was approved by the Board of County Commissioners of Brevard County, Florida
Chairman of the Board
ATTEST: _____ Clerk of the Board
County Engineer

CERTIFICATE OF APPROVAL BY PLANNING AND ZONING COMMISSION
THIS IS TO CERTIFY, That on _____ the Zoning Commission of the above _____ approved the foregoing plat
Planning and Zoning Director

CERTIFICATE OF CLERK
I HEREBY CERTIFY, that I have examined the foregoing plat and find that it complies in form with all the require rules of Chapter 129, Florida Statutes, and was filed for record on 8-22-1987 at 12:55 P.M., File No. 293902
R.E. Winkler Jr. By: *Anthony W. M...*
Clerk of the Circuit Court, Florida
In and for Brevard County, Florida