

DRAWING NUMBER
33-36

DRAWING NUMBER

DRAWING NUMBER

DRAWING NUMBER

PLAT BOOK 33
AND PAGE 36

PLAT BOOK 33
AND PAGE 36

PLAT BOOK 33
AND PAGE 36

PLAT BOOK 33
AND PAGE 36

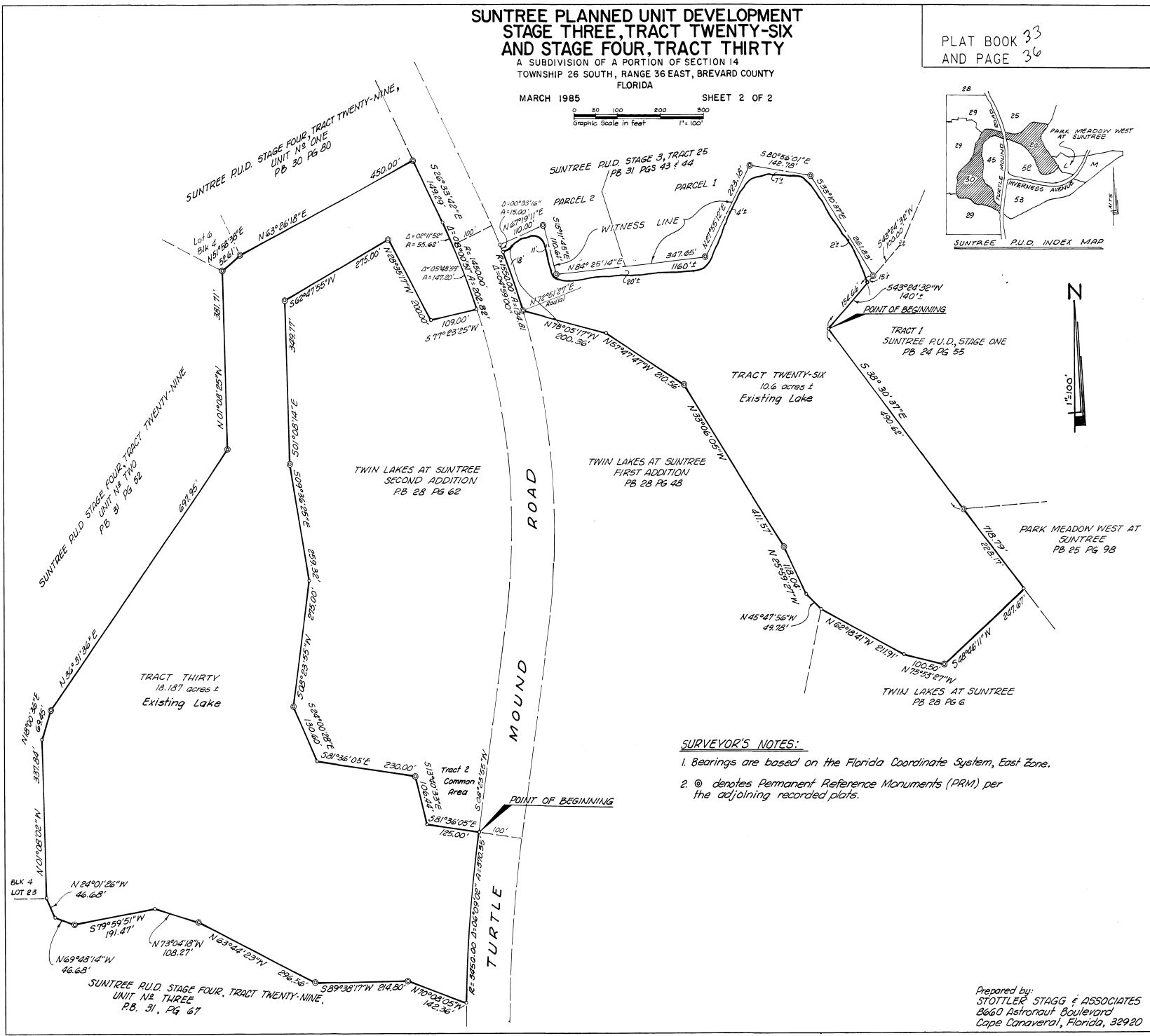
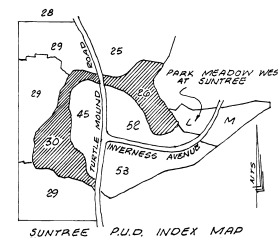
SUNTREE PLANNED UNIT DEVELOPMENT STAGE THREE, TRACT TWENTY-SIX AND STAGE FOUR, TRACT THIRTY

A SUBDIVISION OF A PORTION OF SECTION 14
TOWNSHIP 26 SOUTH, RANGE 36 EAST, BREVARD COUNTY
FLORIDA

MARCH 1985 SHEET 2 OF 2



PLAT BOOK 33
AND PAGE 36



SURVEYOR'S NOTES:
 1. Bearings are based on the Florida Coordinate System, East Zone.
 2. © denotes Permanent Reference Monuments (PRM) per the adjoining recorded plats.

Prepared by:
STOTTLE & STAGG & ASSOCIATES
 2660 Astronaut Boulevard
 Cape Canaveral, Florida, 32920