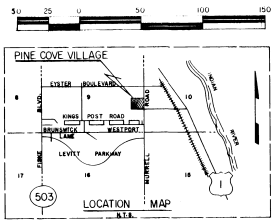
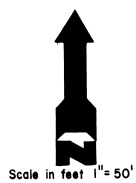


33-28

PINE COVE VILLAGE REPLAT

A REPLAT OF PINE COVE VILLAGE, P.B. 30, PG. 91, SECTION 9, TOWNSHIP 25 SOUTH, RANGE 36 EAST
CITY OF ROCKLEDGE, BREVARD COUNTY, FLORIDA



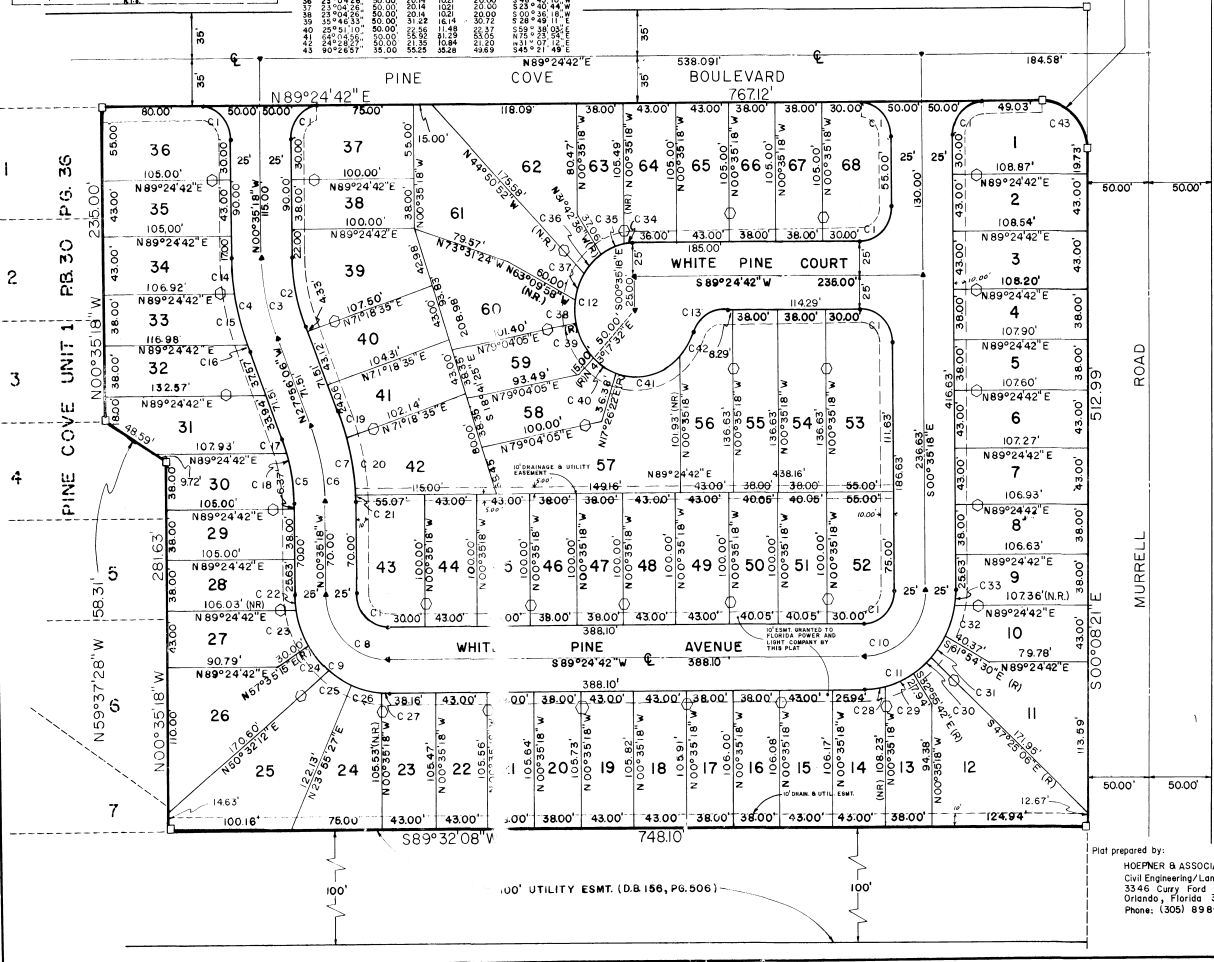
CURVE NO.	DELTA	BEAR	ARC	LAN	CHORD	CHORD BRG
1	90°00'00"	25.00	39.27	25.00	35.36	N11°45'42"W
2	22°50'48"	151.88	49.99	25.06	49.17	S11°45'42"E
3	22°50'48"	151.88	49.99	25.06	49.17	S11°45'42"E
4	22°50'48"	151.88	49.99	25.06	49.17	S11°45'42"E
5	22°50'48"	151.88	49.99	25.06	49.17	S11°45'42"E
6	22°50'48"	151.88	49.99	25.06	49.17	S11°45'42"E
7	22°50'48"	151.88	49.99	25.06	49.17	S11°45'42"E
8	22°50'48"	151.88	49.99	25.06	49.17	S11°45'42"E
9	22°50'48"	151.88	49.99	25.06	49.17	S11°45'42"E
10	22°50'48"	151.88	49.99	25.06	49.17	S11°45'42"E
11	22°50'48"	151.88	49.99	25.06	49.17	S11°45'42"E
12	22°50'48"	151.88	49.99	25.06	49.17	S11°45'42"E
13	22°50'48"	151.88	49.99	25.06	49.17	S11°45'42"E
14	22°50'48"	151.88	49.99	25.06	49.17	S11°45'42"E
15	22°50'48"	151.88	49.99	25.06	49.17	S11°45'42"E
16	22°50'48"	151.88	49.99	25.06	49.17	S11°45'42"E
17	22°50'48"	151.88	49.99	25.06	49.17	S11°45'42"E
18	22°50'48"	151.88	49.99	25.06	49.17	S11°45'42"E
19	22°50'48"	151.88	49.99	25.06	49.17	S11°45'42"E
20	22°50'48"	151.88	49.99	25.06	49.17	S11°45'42"E
21	22°50'48"	151.88	49.99	25.06	49.17	S11°45'42"E
22	22°50'48"	151.88	49.99	25.06	49.17	S11°45'42"E
23	22°50'48"	151.88	49.99	25.06	49.17	S11°45'42"E
24	22°50'48"	151.88	49.99	25.06	49.17	S11°45'42"E
25	22°50'48"	151.88	49.99	25.06	49.17	S11°45'42"E
26	22°50'48"	151.88	49.99	25.06	49.17	S11°45'42"E
27	22°50'48"	151.88	49.99	25.06	49.17	S11°45'42"E
28	22°50'48"	151.88	49.99	25.06	49.17	S11°45'42"E
29	22°50'48"	151.88	49.99	25.06	49.17	S11°45'42"E
30	22°50'48"	151.88	49.99	25.06	49.17	S11°45'42"E
31	22°50'48"	151.88	49.99	25.06	49.17	S11°45'42"E
32	22°50'48"	151.88	49.99	25.06	49.17	S11°45'42"E
33	22°50'48"	151.88	49.99	25.06	49.17	S11°45'42"E
34	22°50'48"	151.88	49.99	25.06	49.17	S11°45'42"E
35	22°50'48"	151.88	49.99	25.06	49.17	S11°45'42"E
36	22°50'48"	151.88	49.99	25.06	49.17	S11°45'42"E
37	22°50'48"	151.88	49.99	25.06	49.17	S11°45'42"E
38	22°50'48"	151.88	49.99	25.06	49.17	S11°45'42"E
39	22°50'48"	151.88	49.99	25.06	49.17	S11°45'42"E
40	22°50'48"	151.88	49.99	25.06	49.17	S11°45'42"E
41	22°50'48"	151.88	49.99	25.06	49.17	S11°45'42"E
42	22°50'48"	151.88	49.99	25.06	49.17	S11°45'42"E
43	22°50'48"	151.88	49.99	25.06	49.17	S11°45'42"E
44	22°50'48"	151.88	49.99	25.06	49.17	S11°45'42"E
45	22°50'48"	151.88	49.99	25.06	49.17	S11°45'42"E
46	22°50'48"	151.88	49.99	25.06	49.17	S11°45'42"E
47	22°50'48"	151.88	49.99	25.06	49.17	S11°45'42"E
48	22°50'48"	151.88	49.99	25.06	49.17	S11°45'42"E
49	22°50'48"	151.88	49.99	25.06	49.17	S11°45'42"E
50	22°50'48"	151.88	49.99	25.06	49.17	S11°45'42"E
51	22°50'48"	151.88	49.99	25.06	49.17	S11°45'42"E
52	22°50'48"	151.88	49.99	25.06	49.17	S11°45'42"E
53	22°50'48"	151.88	49.99	25.06	49.17	S11°45'42"E
54	22°50'48"	151.88	49.99	25.06	49.17	S11°45'42"E
55	22°50'48"	151.88	49.99	25.06	49.17	S11°45'42"E
56	22°50'48"	151.88	49.99	25.06	49.17	S11°45'42"E
57	22°50'48"	151.88	49.99	25.06	49.17	S11°45'42"E
58	22°50'48"	151.88	49.99	25.06	49.17	S11°45'42"E
59	22°50'48"	151.88	49.99	25.06	49.17	S11°45'42"E
60	22°50'48"	151.88	49.99	25.06	49.17	S11°45'42"E
61	22°50'48"	151.88	49.99	25.06	49.17	S11°45'42"E
62	22°50'48"	151.88	49.99	25.06	49.17	S11°45'42"E
63	22°50'48"	151.88	49.99	25.06	49.17	S11°45'42"E
64	22°50'48"	151.88	49.99	25.06	49.17	S11°45'42"E
65	22°50'48"	151.88	49.99	25.06	49.17	S11°45'42"E
66	22°50'48"	151.88	49.99	25.06	49.17	S11°45'42"E
67	22°50'48"	151.88	49.99	25.06	49.17	S11°45'42"E
68	22°50'48"	151.88	49.99	25.06	49.17	S11°45'42"E

DESCRIPTION
A Replat of Tract "B" of Pine Cove Unit 1, as plotted in Plat Book 30, Pages 30 & 36 of the Public Records of Brevard County, Florida. More particularly described as follows:
Beginning at the Southeast corner of Tract "B", also being the Southeast corner of Pine Cove Unit 1, thence running S89°32'08"W along the South line of Tract "B", a distance of 748.10 feet; thence N00°35'18"W a distance of 281.63 feet; thence N59°37'28"W a distance of 58.31 feet; thence N00°35'18"W a distance of 2,350.00 feet to the Southerly right-of-way of Pine Cove Boulevard; thence N89°24'42"E a distance of 767.12 feet to a point of curvature; thence along a curve having a radius of 35.00 feet, a central angle of 90°26'57", an arc distance of 552.55 feet to a point of tangency on the West right-of-way line of Murrell Road; thence S00°08'21"E along said right-of-way line a distance of 512.99 feet to the point of beginning.

- LEGEND & GENERAL NOTES**
- (1) Denotes a 4"x4" Concrete Monument/Permanent Reference Monument (PRM); R.L.S. No. 3970.
 - (2) Denotes change in direction, (not permanently staked)
 - (3) All dimensions are rounded to the nearest 0.01 of a foot or to the nearest 0.00'00" of an arc.
 - (4) Curves are assigned a Curve Number, (C#), and listed in the CURVE DATA TABLE.
 - (5) Denotes 5/16" Steel Spike/Permanent Control Point (PCP)
 - (6) Lot lines bearing this symbol have no building setbacks or utility easements.

A = 90°26'57"
R = 35.00'
A = 55.25'
T = 35.2'
Ch = 49.69'
Ch BRG = S45°21'49"E

Containing 9.7095 acres more or less.



PLAT BOOK 33 PAGE 28

PINE COVE VILLAGE REPLAT DEDICATION

KNOW ALL MEN BY THESE PRESENTS, That the Corporation named below, being the owner in fee simple of the lands described in the foregoing caption to this plat, hereby dedicates said lands and plat for the uses and purposes therein expressed and dedicates the STREETS, ALLEYS, THOROUGHFARES, RIGHTS-OF-WAY AND EASEMENTS shown hereon to the perpetual use of the public, and THE CITY OF ROCKLEDGE.

IN WITNESS WHEREOF, has caused these presents to be signed and attested by the officers named below and its corporate seal to be affixed hereto on Sept. 26, 1986.

CATALINA HOMES, INC. a Florida corporation
By: *William S. Orosz, Jr.*
William S. Orosz, Jr. President

Attest:
Shirley Stebbins
Shirley Stebbins, Secretary/Treasurer
Charles E. Thompson
Charles E. Thompson, Notary Public

STATE OF FLORIDA COUNTY OF BREVARD

THIS IS TO CERTIFY, That on Sept. 26, 1986 before me, an officer duly authorized to take acknowledgments in the State and County aforesaid, personally appeared William S. Orosz, Jr. and Jerry Staskley respectively, President and Secretary/Treasurer of the above named corporation incorporated under the laws of the State of Florida, to me known to be the individuals and officers described in and who executed the foregoing Dedication and severally acknowledged the execution thereof to be their free act and deed as such officers thereto duly authorized; that the official seal of said corporation is duly affixed thereto; and that the said Dedication is the act and deed of said corporation.

IN WITNESS WHEREOF, I have hereto set my hand and seal on the above date.

Charles E. Thompson
NOTARY PUBLIC
My Commission Expires Jan. 15, 1987

CERTIFICATE OF SURVEYOR

KNOW ALL MEN BY THESE PRESENTS, That the undersigned, being a licensed and registered land surveyor, does hereby certify that on November 24, 1985, he completed the survey of the lands as shown in the foregoing plat or plan; that said plat is a correct representation of the lands therein described and platted or subdivided; that permanent reference monuments have been placed as shown thereon as required by Chapter 177, Florida Statutes; and that said land is located in Brevard County, Florida. Dated, November 24, 1985.

Paul E. Wilson
Paul E. Wilson Registration No. 3970

CERTIFICATE OF APPROVAL BY MUNICIPALITY

THIS IS TO CERTIFY, That on December 3, 1986 the City Council of the City of Rockledge Florida approved the foregoing plat.

John G. Fata
MAYOR

Attest:
Kathleen L. Hamilton
CITY CLERK

CERTIFICATE OF APPROVAL BY ZONING COMMISSION

THIS IS TO CERTIFY, That on _____ the Zoning Commission of the above Municipality approved the foregoing plat.

_____, Chairman.

CERTIFICATE OF COUNTY CLERK

I HEREBY CERTIFY, That I have examined the foregoing plat and find that it complies in form with all the requirements of Chapter 177, Florida Statutes, and was filed for record on 12-8-1986 at 4:11 P.M. File No. 270478.

R.E. Winstanley Jr.
County Clerk
in and for Brevard County

By: *Anthony W. Moxo* D.C.

Plat prepared by:
HOEPNER & ASSOCIATES
Civil Engineering/Land Surveying
3346 Curry Ford Road
Orlando, Florida 32806
Phone: (305) 898-6388

FOR RESTRICTIONS SEE O.R.B. 2812 PAGE 478

FOR RESTRICTIONS SEE O.R.B. 2555 PG 2074