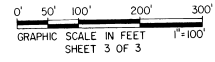
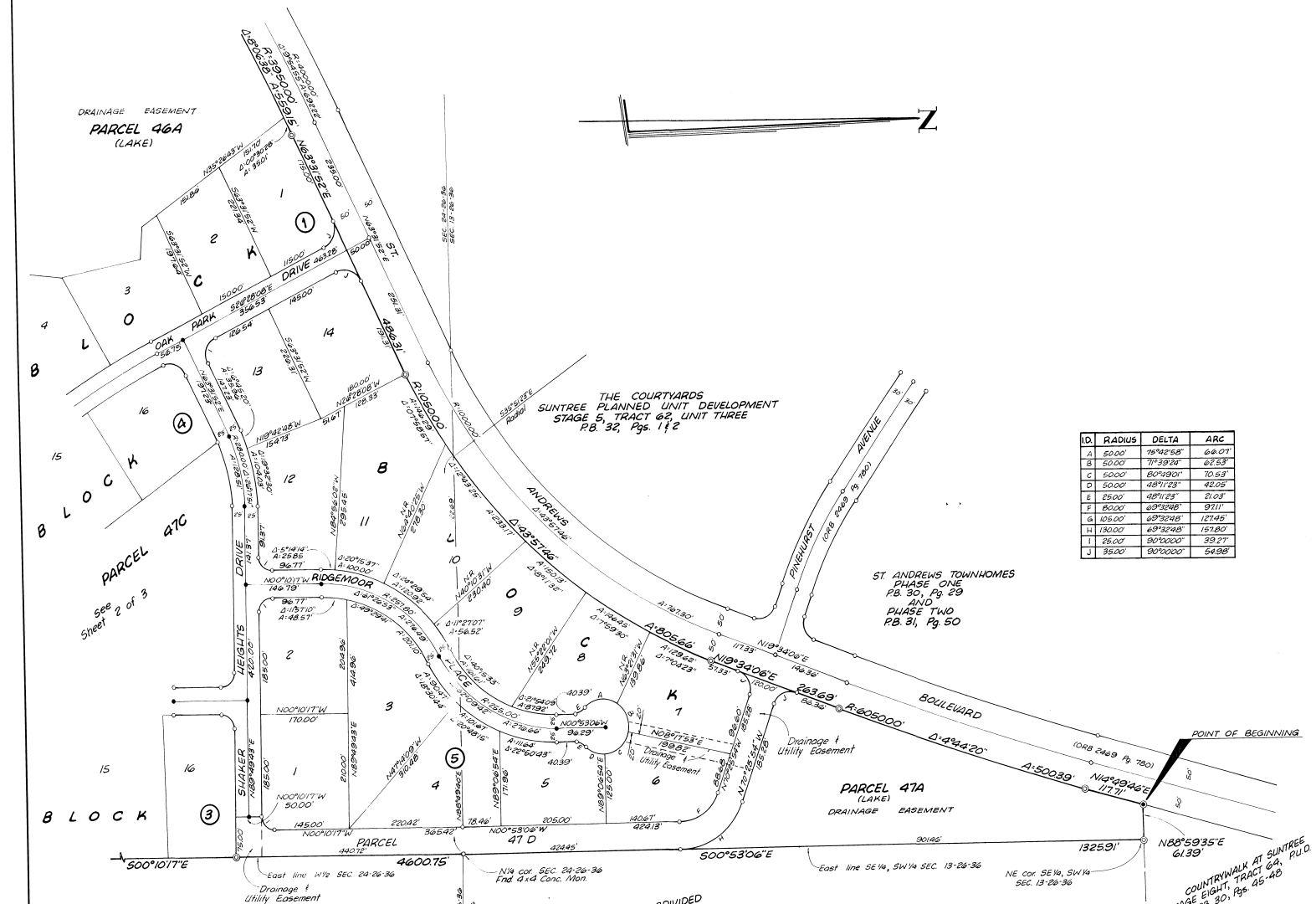


OAK PARK AT SUNTREE

SUNTREE PLANNED UNIT DEVELOPMENT
 STAGE 8, TRACT 47 AND PART OF TRACT 46
 A SUBDIVISION OF A PORTION OF
 SECTIONS 13 AND 24, TOWNSHIP 26 SOUTH, RANGE 36 EAST
 BREVARD COUNTY, FLORIDA



33-22



ID.	RADIUS	DELTA	ARC
A	50.00'	78°42'58"	68.01'
B	50.00'	71°39'24"	62.53'
C	50.00'	80°49'01"	70.53'
D	50.00'	48°11'23"	42.02'
E	25.00'	48°11'23"	21.01'
F	50.00'	69°36'08"	37.11'
G	105.00'	69°36'08"	121.45'
H	130.00'	49°22'43"	153.80'
I	25.00'	90°00'00"	39.27'
J	35.00'	90°00'00"	54.98'

Prepared By:
 Stottler Staggs and Associates
 8660 Astronaut Boulevard
 Cape Canaveral, Florida 32920

NOT SUBDIVIDED

COUNTRYWALK AT SUNTREE
 STAGE EIGHT, TRACT 6A, P.U.D.
 PB. 30, Pgs. 45-48