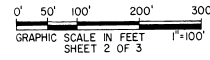


33-21

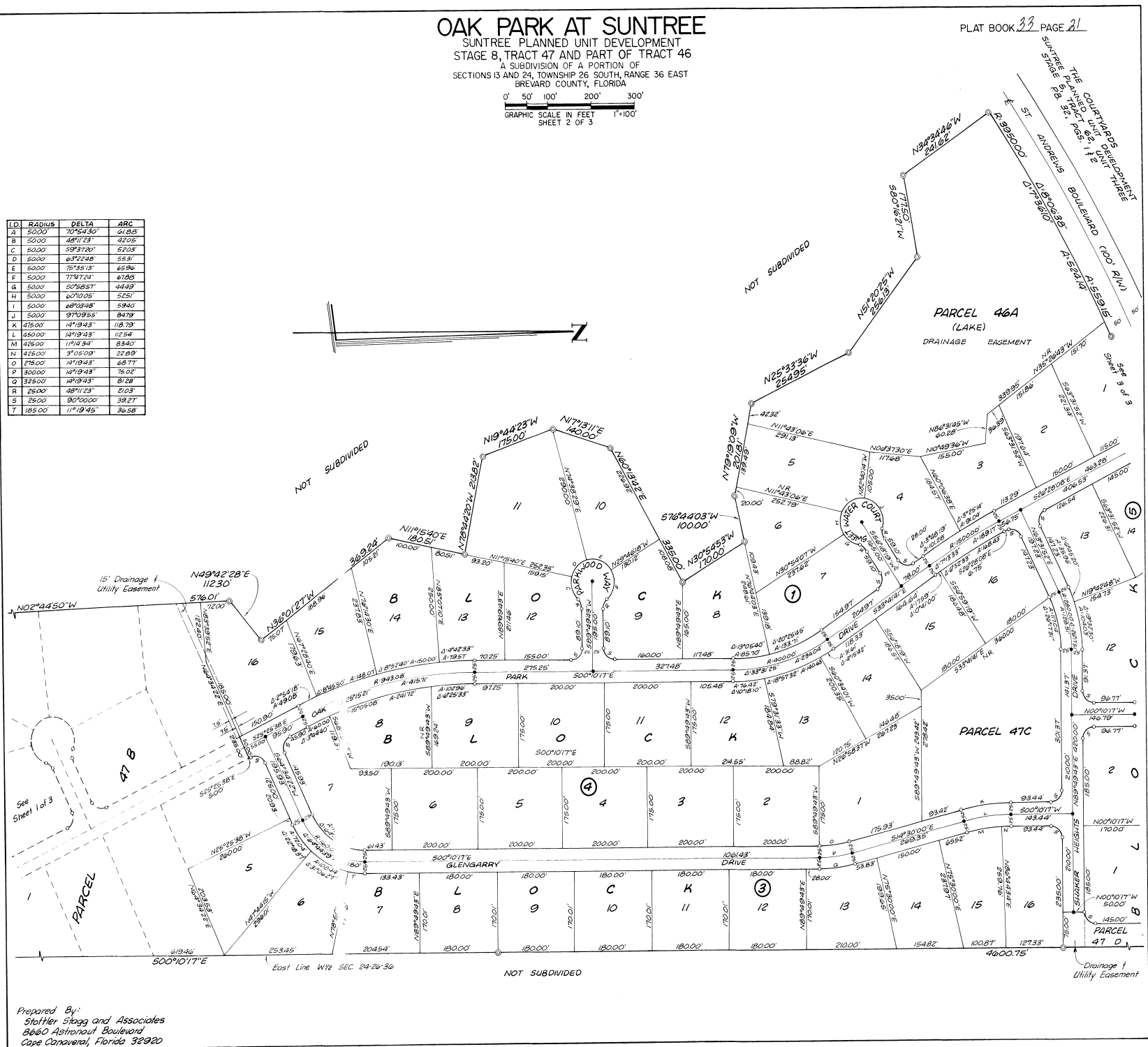
OAK PARK AT SUNTREE

SUNTREE PLANNED UNIT DEVELOPMENT
 STAGE 8, TRACT 47 AND PART OF TRACT 46
 A SUBDIVISION OF A PORTION OF
 SECTIONS 13 AND 24, TOWNSHIP 26 SOUTH, RANGE 36 EAST
 BREVARD COUNTY, FLORIDA

PLAT BOOK 33 PAGE 21



ID	RADIUS	DELTA	ARC
A	50.00	70°54'30"	51.85
B	50.00	48°17'23"	42.05
C	50.00	59°37'40"	52.03
D	50.00	63°22'48"	55.31
E	50.00	75°39'13"	65.96
F	50.00	77°47'31"	67.85
G	50.00	50°58'57"	44.42
H	50.00	60°10'05"	52.51
I	50.00	68°03'48"	59.40
J	50.00	97°09'55"	84.79
K	475.00	14°19'43"	118.79
L	450.00	14°19'43"	112.54
M	450.00	11°43'31"	83.40
N	425.00	3°25'09"	22.59
O	275.00	14°19'43"	68.77
P	300.00	14°19'43"	76.02
Q	325.00	14°19'43"	81.28
R	25.00	48°11'23"	21.03
S	25.00	80°00'00"	39.27
T	185.00	11°18'45"	36.58



Prepared By:
 Stettler Stagg and Associates
 8600 Astronaut Boulevard
 Cape Canaveral, Florida 32920