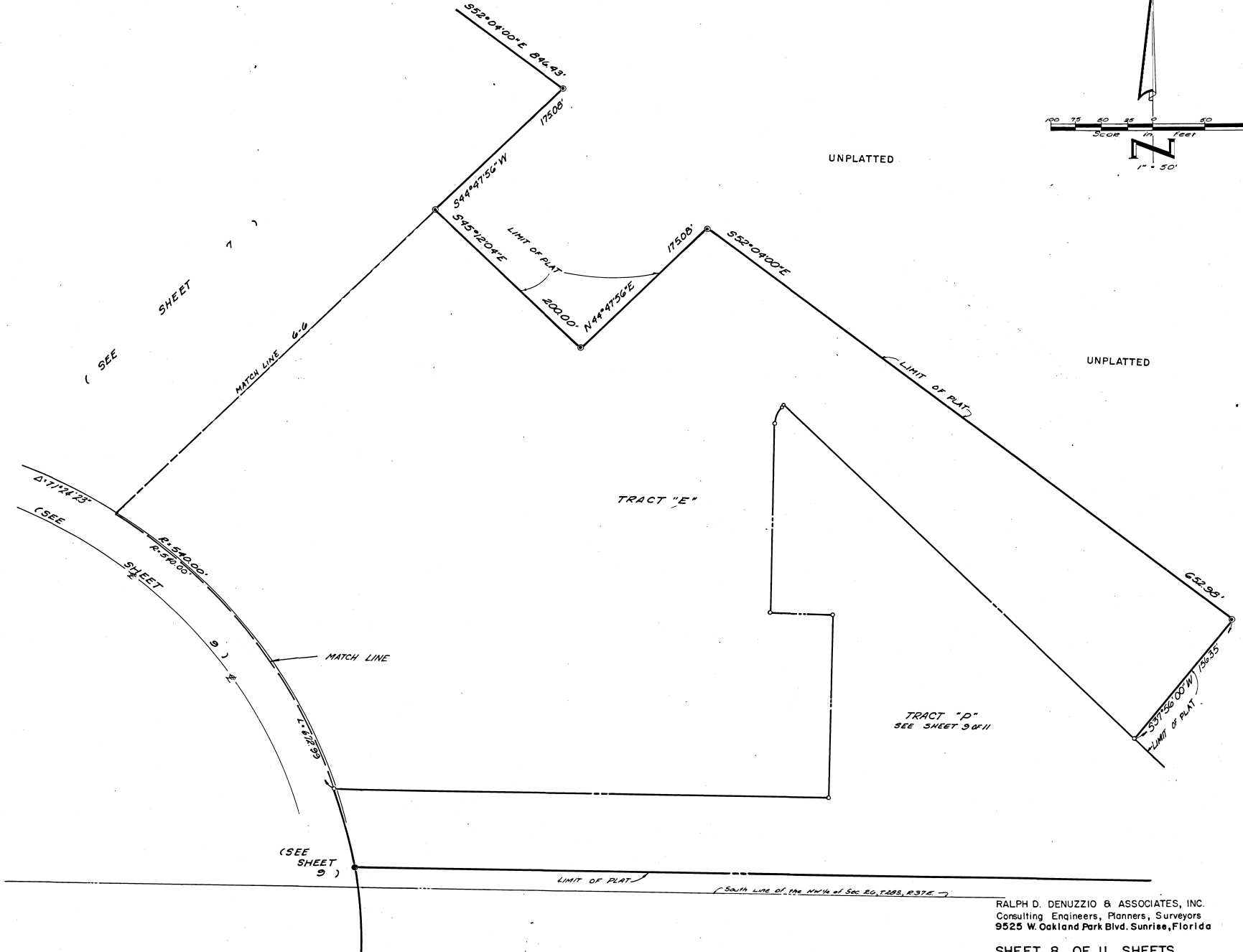
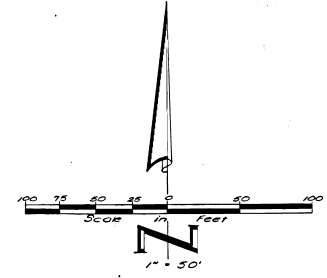


PORT MALABAR UNIT FIFTY-NINE  
 REPLAT OF A PORTION OF FLORIDA INDIAN RIVER LAND COMPANY (PLAT BOOK I, PAGE 164)  
 SECTIONS 26 & 27, TOWNSHIP 28 SOUTH, RANGE 37 EAST  
 CITY OF PALM BAY, BREVARD COUNTY, FLORIDA

PLAT BOOK 37  
 PAGE 85



UNPLATTED

UNPLATTED

TRACT "E"

TRACT "P"  
 SEE SHEET 9 OF 11

SEE SHEET 9 OF 11

RALPH D. DENUZZIO & ASSOCIATES, INC.  
 Consulting Engineers, Planners, Surveyors  
 9525 W. Oakland Park Blvd. Sunrise, Florida

SHEET 8 OF 11 SHEETS  
 0 LOTS THIS SHEET