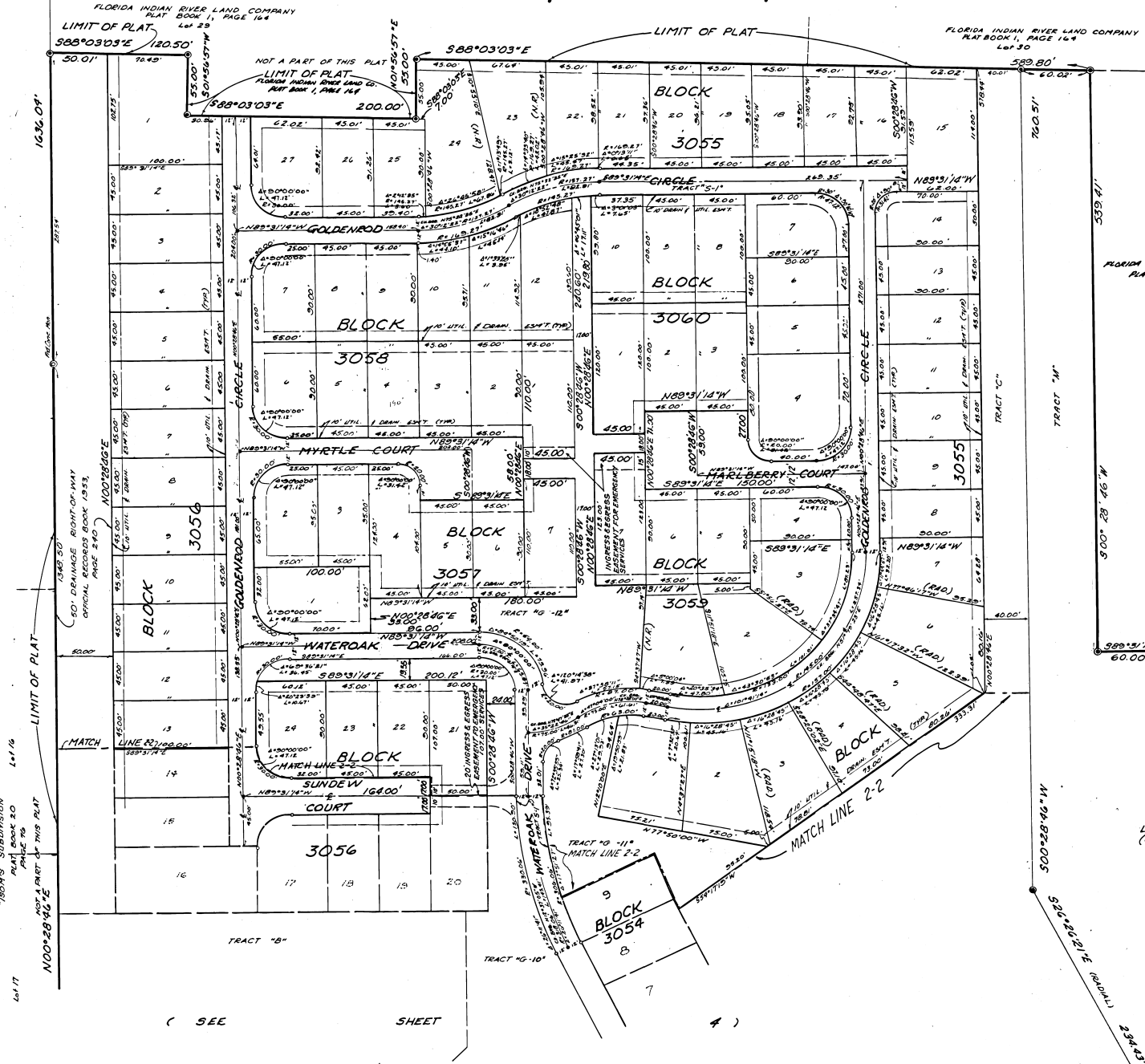


**PORT MALABAR UNIT FIFTY-NINE
 REPLAT OF A PORTION OF FLORIDA INDIAN RIVER LAND COMPANY (PLAT BOOK I, PAGE 164)
 SECTIONS 26 & 27, TOWNSHIP 28 SOUTH, RANGE 37 EAST
 CITY OF PALM BAY, BREVARD COUNTY, FLORIDA**

PLAT BOOK 33
 PAGE 30



FLORIDA INDIAN RIVER LAND COMPANY
 PLAT BOOK I, PAGE 164

LIMIT OF PLAT
 (SEE SHEET 4)

(SEE SHEET

RALPH D. DENUZZIO & ASSOCIATES, INC.
 Consulting Engineers, Planners, Surveyors
 9525 W. Oakland Park Blvd. Sunrise, Florida

SHEET 5 OF 11 SHEETS
 80 LOTS THIS SHEET