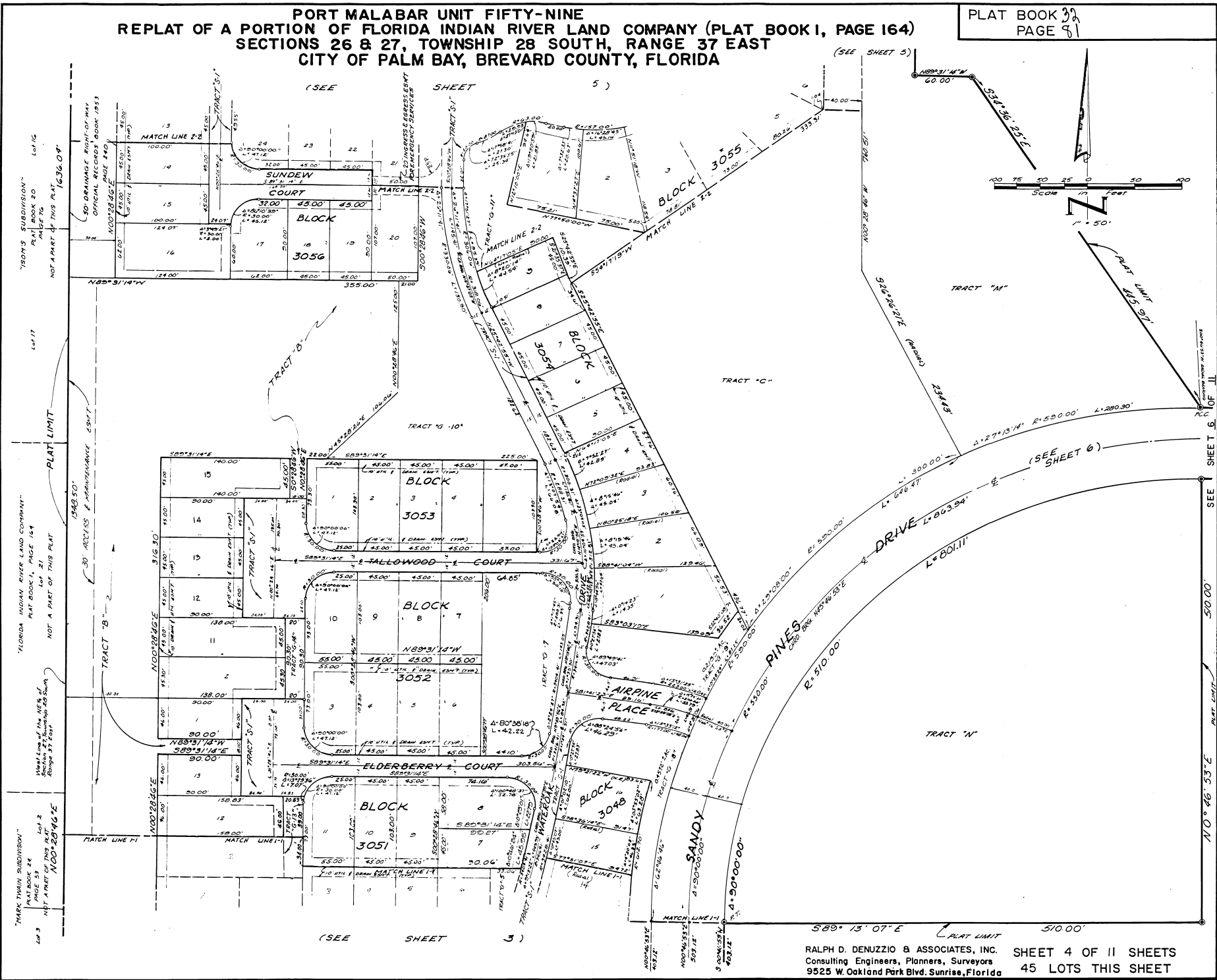


**PORT MALABAR UNIT FIFTY-NINE
REPLAT OF A PORTION OF FLORIDA INDIAN RIVER LAND COMPANY (PLAT BOOK I, PAGE 164)
SECTIONS 26 & 27, TOWNSHIP 28 SOUTH, RANGE 37 EAST
CITY OF PALM BAY, BREVARD COUNTY, FLORIDA**

PLAT BOOK 32
PAGE 81



"SONY SUBDIVISION"
PLAT BOOK 20
PAGE 20
NOT A PART OF THIS PLAT
1636.09'

"FLORIDA INDIAN RIVER LAND COMPANY"
PLAT BOOK I, PAGE 164
NOT A PART OF THIS PLAT

"MARK TRWIN SUBDIVISION"
PLAT BOOK 24
PAGE 53
NOT A PART OF THIS PLAT
N00°28'46"E

589° 13' 07" E PLAT LIMIT 510.00'

RALPH D. DENUZZIO & ASSOCIATES, INC. SHEET 4 OF 11 SHEETS
Consulting Engineers, Planners, Surveyors
9525 W. Oakland Park Blvd. Sunrise, Florida 45 LOTS THIS SHEET