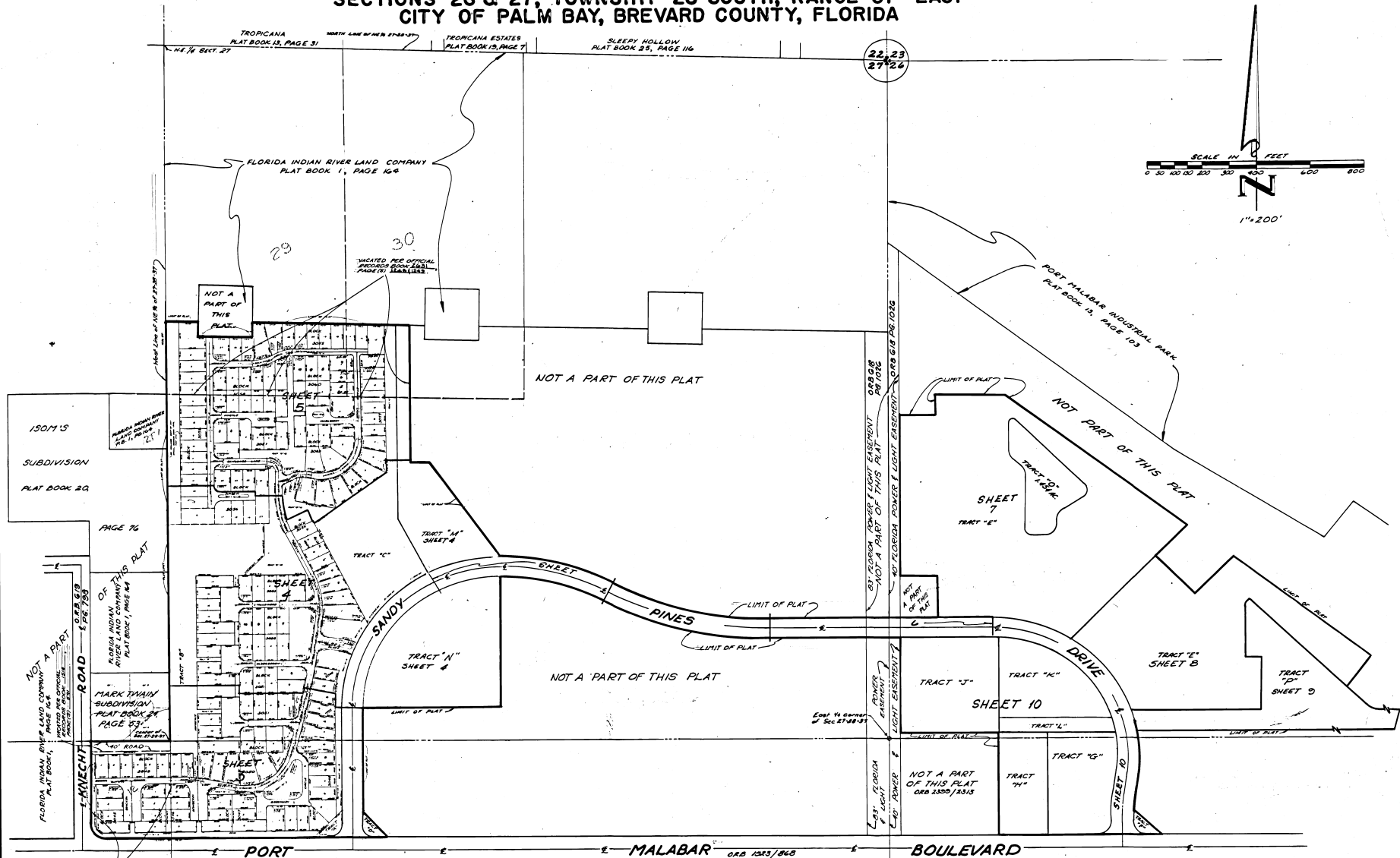


**PORT MALABAR UNIT FIFTY-NINE  
REPLAT OF A PORTION OF FLORIDA INDIAN RIVER LAND COMPANY (PLAT BOOK I, PAGE 164)  
SECTIONS 26 & 27, TOWNSHIP 28 SOUTH, RANGE 37 EAST  
CITY OF PALM BAY, BREVARD COUNTY, FLORIDA**

PLAT BOOK 32  
PAGE 79



FIRST REPLAT IN PORT MALABAR UNIT FIVE  
PLAT BOOK 18, PAGE 22

**LOCATION & KEY MAP**  
SECTIONS 26 & 27, TOWNSHIP 28 SOUTH, RANGE 37 EAST  
CITY OF PALM BAY  
BREVARD COUNTY, FLORIDA

RALPH D. DENUZZIO & ASSOCIATES, INC.  
Consulting Engineers, Planners, Surveyors  
9525 W. Oakland Park Blvd. Sunrise, Florida

SHEET 2 OF 11 SHEETS  
182 TOTAL NO. OF LOTS