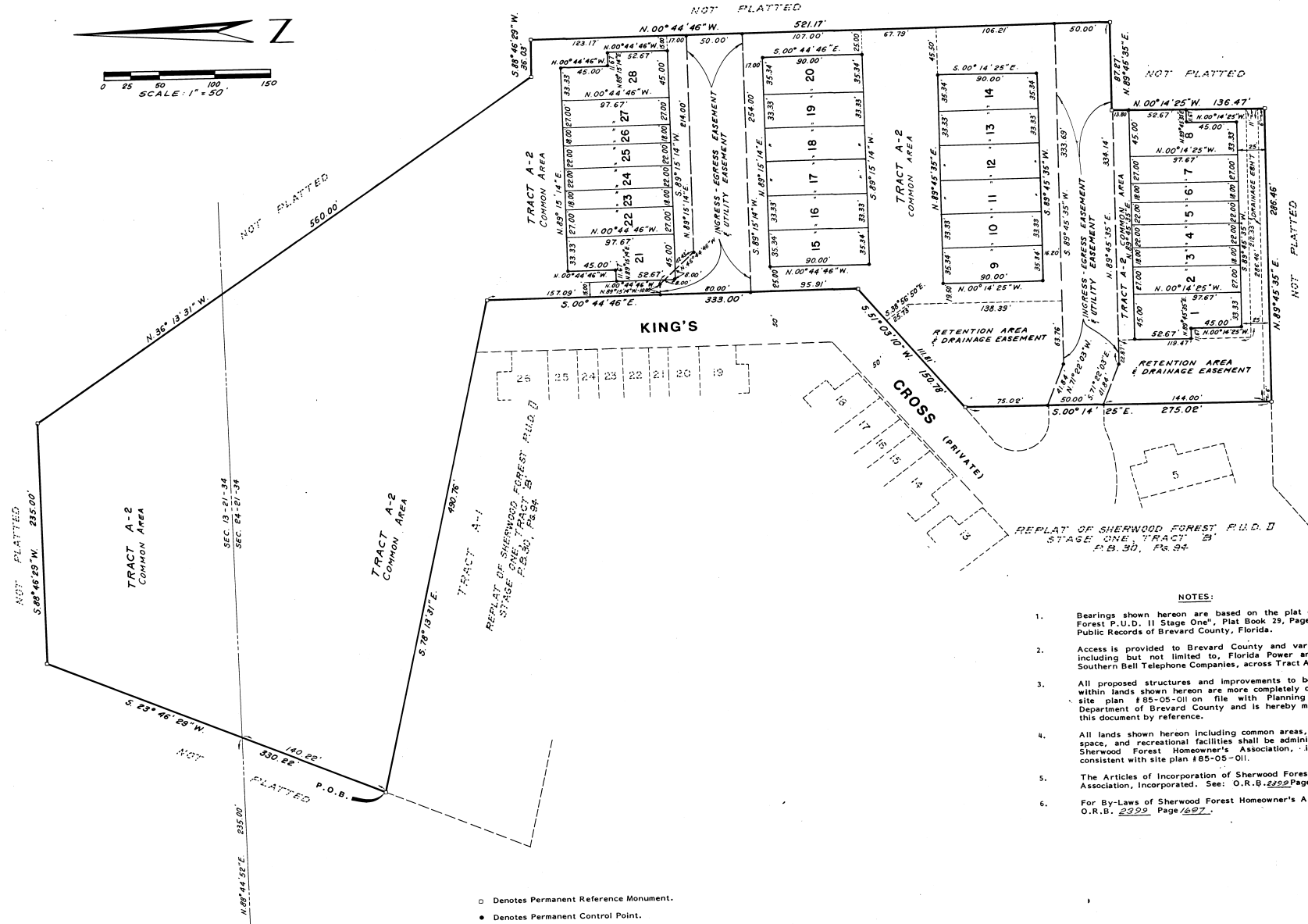
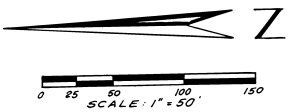


SHERWOOD FOREST P.U.D. II STAGE TWO PHASE ONE

A PORTION OF THE SE 1/4 SECTION 13, AND A PORTION OF THE NE 1/4 SECTION 24,
TOWNSHIP 21 SOUTH, RANGE 34 EAST
BREVARD COUNTY, FLORIDA

PLAT BOOK 31
AND PAGE 89

SHEET 2 OF 2



REPLAT OF SHERWOOD FOREST P.U.D. II
STAGE ONE, TRACT "B"
P.B. 30, P. 84

NOTES:

1. Bearings shown hereon are based on the plat of "Sherwood Forest P.U.D. II Stage One", Plat Book 29, Pages 40 and 41, Public Records of Brevard County, Florida.
2. Access is provided to Brevard County and various utilities, including but not limited to, Florida Power and Light and Southern Bell Telephone Companies, across Tract A-2.
3. All proposed structures and improvements to be constructed within lands shown hereon are more completely defined in the site plan #85-05-011 on file with Planning and Zoning Department of Brevard County and is hereby made a part of this document by reference.
4. All lands shown hereon including common areas, common open space, and recreational facilities shall be administered by the Sherwood Forest Homeowner's Association, in a manner consistent with site plan #85-05-011.
5. The Articles of Incorporation of Sherwood Forest Homeowner's Association, Incorporated. See: O.R.B. 2399 Page 1490.
6. For By-Laws of Sherwood Forest Homeowner's Association, see O.R.B. 2399 Page 697.

- Denotes Permanent Reference Monument.
- Denotes Permanent Control Point.