

ROYAL PALM ESTATES



SECTION 36, TOWNSHIP 23S., RANGE 35E.

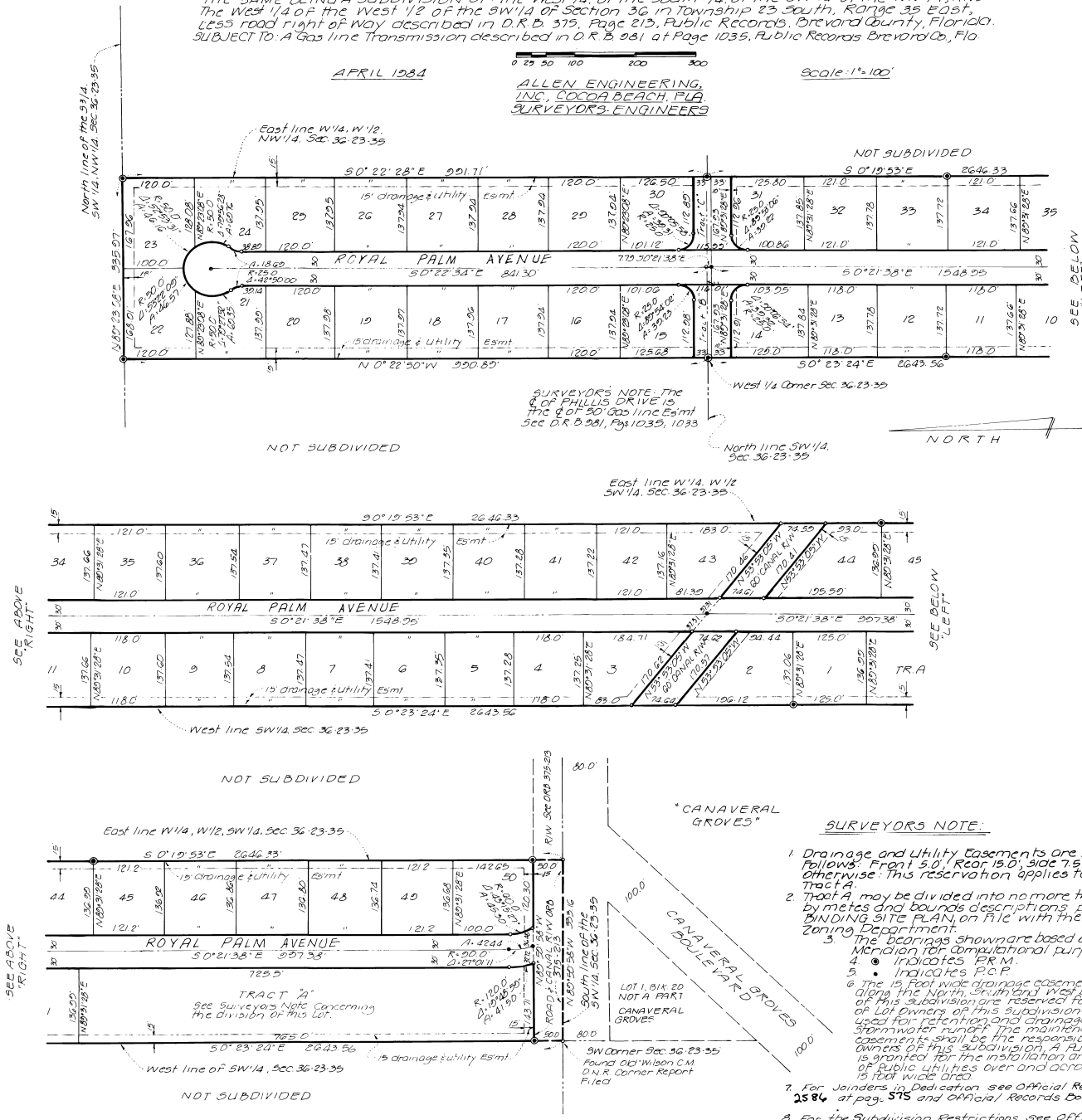
THE SAME BEING A SUBDIVISION OF THE West 1/4 of the South 1/4 of the SW 1/4 of the NW 1/4, AND THE West 1/4 of the West 1/2 of the SW 1/4 of Section 36, in Township 23 South, Range 35 East, LESS road right of Way described in O.R.B. 375, Page 213, Public Records, Brevard County, Florida, SUBJECT TO: A Gas line Transmission described in O.R.B. 981, at Page 1035, Public Records Brevard Co, Fla.

APRIL 1984

0 25 50 100 200 300

Scale: 1"=100'

ALLEN ENGINEERING, INC., COCOA BEACH, FLA. SURVEYORS ENGINEERS



PLAT BOOK 31 AND PAGE 51

DEDICATION

KNOW ALL MEN BY THESE PRESENTS, That the Corporation named below being the owner in fee simple of the lands described herein, Royal Palm Estates, hereby dedicates said lands and plot for the uses and purposes therein expressed and dedicates the streets, alleys, thoroughfares, parks, canals, drainage easements, utility easements, lakes, pathways, open spaces and other rights of way, easements shown hereon to the perpetual use of the public.

IN WITNESS WHEREOF, has caused these presents to be signed and attested to by the officers named below and its Corporate Seal to be affixed hereon, July 31st, 1984.

By Richard P. Bunch, President
Attest: Anna S. New, Secretary

Signed and sealed in the presence of: seal
Ed M. Stehle, RANIC, INC., 1500 Palm Avenue, Merritt Isl., Fla 32952
Walter C. Bunch

STATE OF FLORIDA... COUNTY OF BREVARD.
THIS IS TO CERTIFY, That on July 31st, 1984, before me, an officer duly authorized to take acknowledgments in the State and County aforesaid, personally appeared Richard P. Bunch and Anna S. New, respectively President and Secretary of the above named Corporation and under the laws of the State of Florida, they well know to be the individual and officers described in and who executed the foregoing dedication and severally and jointly advised me they were or to be their free act and deed as such officers thereto duly authorized; that the official seal of said Corporation is duly affixed thereto, and that said Corporation is the authorized and legal Corporation. IN WITNESS WHEREOF, I have hereunto set my hand and seal on the above date.

Michael A. McShee
NOTARY PUBLIC
My Commission Expires May 24th, 1988.

CERTIFICATE OF SURVEYOR

KNOW ALL MEN BY THESE PRESENTS, That the undersigned, being a licensed and registered land surveyor, does hereby certify that on April 23, 1984, he completed the survey of the lands as shown in the foregoing plat; that said plat is a correct representation of the lands therein described and platted; that permanent reference monuments have been placed as shown thereon as required by Chapter 177, Florida Statutes, and that said land is located in Brevard County, Florida. Dated April 23, 1984.

John R. Bunch Registration No. 2351
Anna S. New

CERTIFICATE OF APPROVAL BY MUNICIPALITY

THIS IS TO CERTIFY, That on _____ the _____ approved the foregoing plat.

SEAL

ATTEST: _____ MAYOR.
_____ CITY CLERK.

CERTIFICATE OF ACCEPTANCE OF DEDICATION BY BOARD OF COUNTY COMMISSIONERS

THIS IS TO CERTIFY That the Board of County Commissioners hereby accepts all roads, streets, alleys, thoroughfares, parks, canals, drainage easements, utility easements, lakes, pathways, open spaces and other rights of way, easement and areas dedicated for public use on this plat.

Ed M. Stehle
Chairman of the Board

ATTEST: R.C. Winstead Jr. By Anthony W. Migo
Clerk of the Board

CERTIFICATE OF APPROVAL BY BOARD OF COUNTY COMMISSIONERS

THIS IS TO CERTIFY, That on August 9, 1984, the foregoing plat was approved by the Board of County Commissioners of Brevard County, Florida.

Ed M. Stehle
Chairman of the Board.

Attest: R.C. Winstead Jr. By Anthony W. Migo
Clerk of the Board
Approved: Kiddiebell
County Engineer

CERTIFICATE OF APPROVAL BY PLANNING AND ZONING COMMISSION

THIS IS TO CERTIFY, That on August 2, 1984, the Zoning Commission of the above County approved the foregoing plat.

John R. Bunch
Planning and Zoning Director

CERTIFICATE OF CLERK

I HEREBY CERTIFY, That I have examined the foregoing plat and find that it complies in form with all the requirements of Chapter 177, Florida Statutes, and was filed for record on 3-22-1985 at 2:37 PM, file No. 009334.

R.C. Winstead Jr. By Anthony W. Migo
Clerk of the Circuit Court in and for Brevard County, Fla.

- SURVEYORS NOTE:**
1. Drainage and Utility Easements are reserved as follows: Front 5.0', Rear 15.0', side 7.5' unless noted otherwise. This reservation applies to all lots and Tract A.
 2. Tract A may be divided into no more than six (6) parcels by metes and bounds descriptions, per SECTION 177, BINDING SITE PLAN, on file with the Planning and Zoning Department.
 3. The bearings shown are based on an assumed Meridian for computational purposes.
 4. • Indicates PERM.
 5. • Indicates RCP.
 6. The 15 Foot wide drainage easement that runs along the North, South and West boundary lines of this subdivision are reserved for the benefit of Lot Owners of this subdivision and shall be used for retention and drainage of private stormwater runoff. The maintenance of these easements shall be the responsibility of the lot owners of this subdivision. A public easement is granted for the installation and maintenance of public utilities over and across the same 15 foot wide area.
 7. For Joinders in Dedication see Official Records Book at page 575 and Official Records Book 2586 at page 576.
 8. For the Subdivision Restrictions see Official Records Book 2586 at page 565.
 9. Tracts "B" and "C" are reserved by the developer for future road right-of-way.