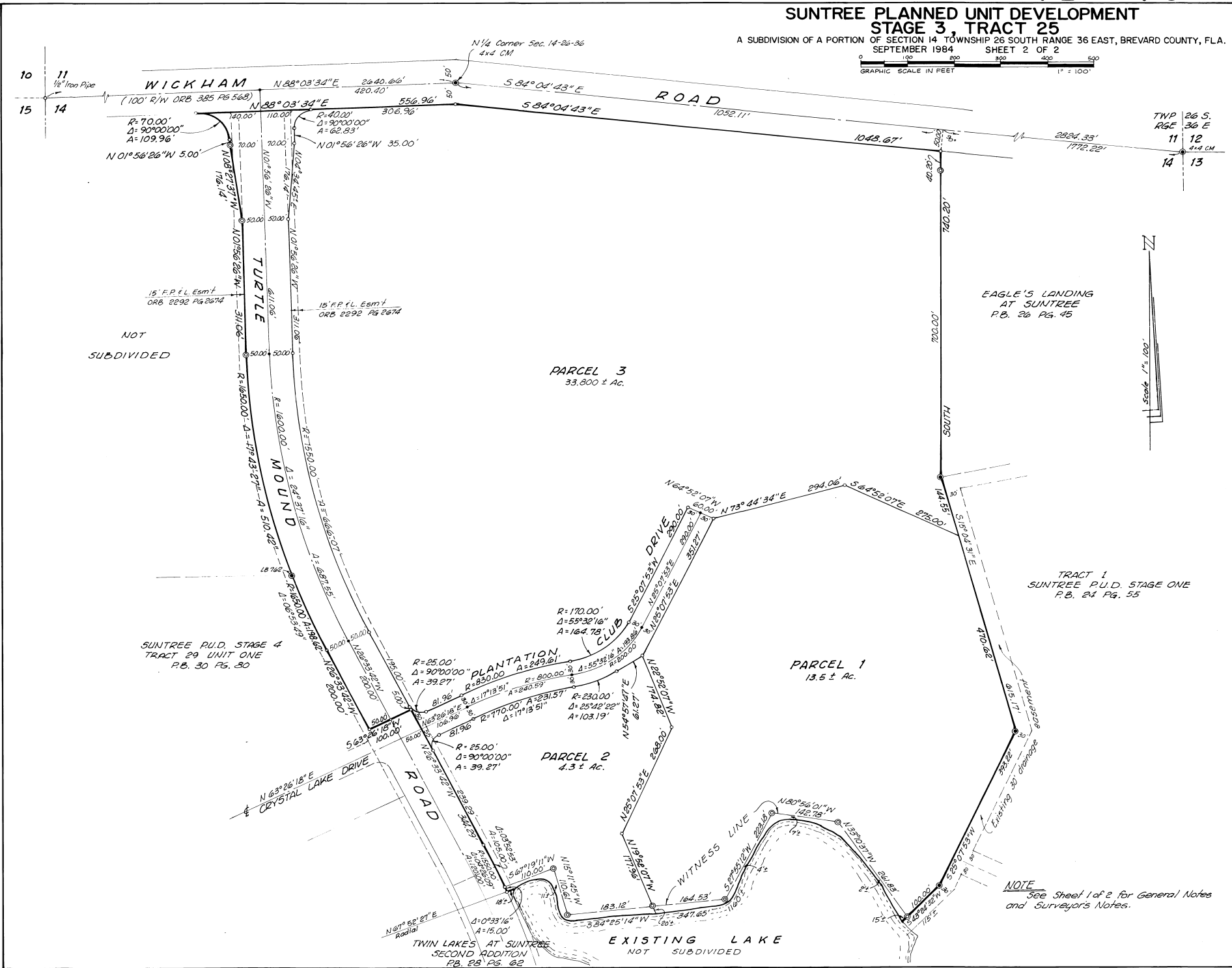


SUNTREE PLANNED UNIT DEVELOPMENT STAGE 3, TRACT 25

A SUBDIVISION OF A PORTION OF SECTION 14 TOWNSHIP 26 SOUTH RANGE 36 EAST, BREVARD COUNTY, FLA.
SEPTEMBER 1984 SHEET 2 OF 2



10
15
11
14

TWP 26 S.
RGE 36 E.
11 12
14 13

NOT
SUBDIVIDED

PARCEL 3
33.800 ± Ac.

PARCEL 1
13.6 ± Ac.

PARCEL 2
4.3 ± Ac.

SUNTREE P.U.D. STAGE 4
TRACT 29 UNIT ONE
P.B. 30 Pgs. 30

EAGLE'S LANDING
AT SUNTREE
P.B. 26 Pgs. 45

TRACT 1
SUNTREE P.U.D. STAGE ONE
P.B. 24 Pgs. 55

TWIN LAKES AT SUNTREE
SECOND ADDITION
P.B. 28 Pgs. 62

EXISTING LAKE
NOT SUBDIVIDED

NOTE
See Sheet 1 of 2 for General Notes
and Surveyor's Notes.