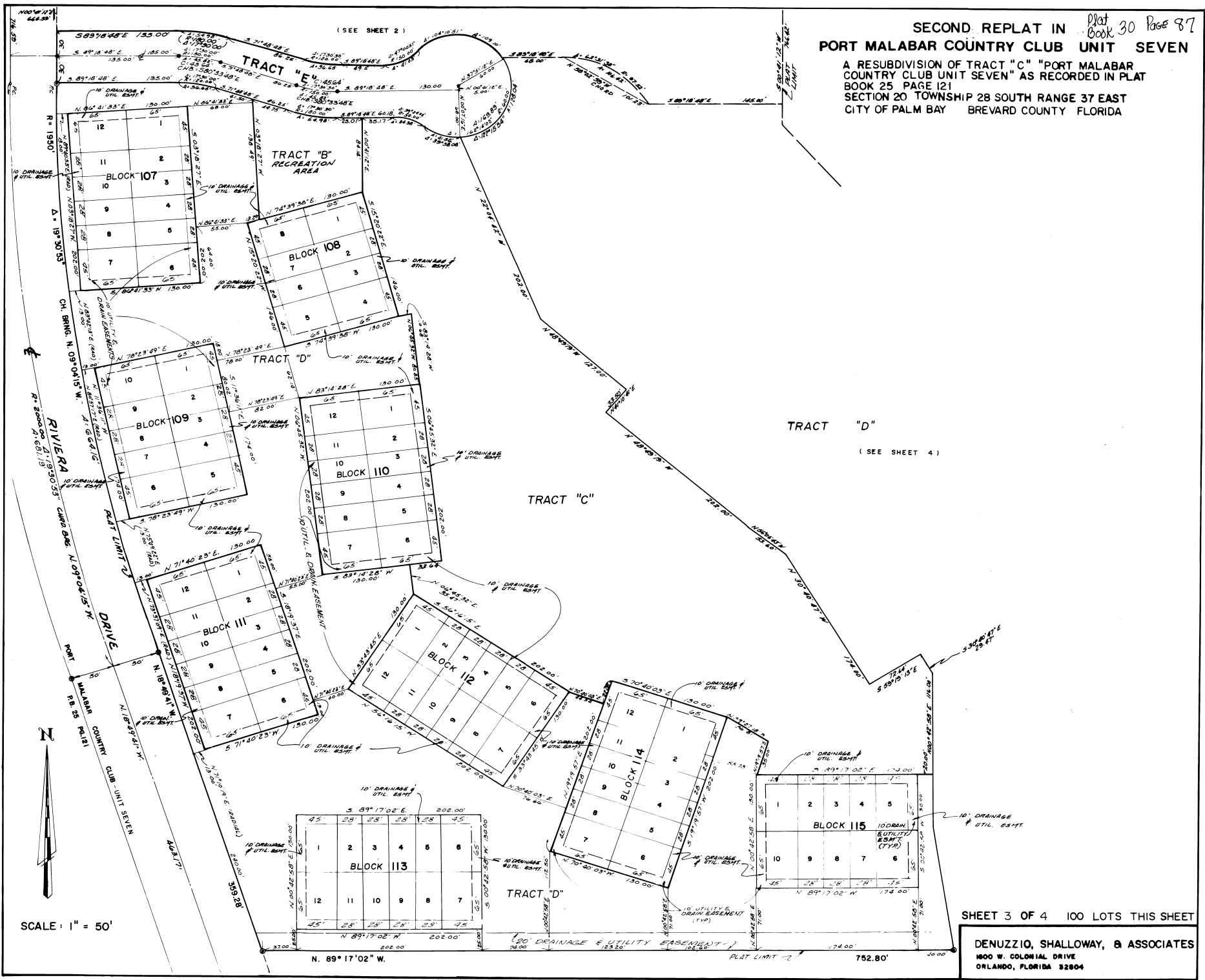


SECOND REPLAT IN *Plat Book 30 Page 87*
PORT MALABAR COUNTRY CLUB UNIT SEVEN
 A RESUBDIVISION OF TRACT "C" "PORT MALABAR
 COUNTRY CLUB UNIT SEVEN" AS RECORDED IN PLAT
 BOOK 25 PAGE 121
 SECTION 20 TOWNSHIP 28 SOUTH RANGE 37 EAST
 CITY OF PALM BAY BREVARD COUNTY FLORIDA



SHEET 3 OF 4 100 LOTS THIS SHEET

DENUZZIO, SHALLOWAY, & ASSOCIATES
 1600 W. COLONIAL DRIVE
 ORLANDO, FLORIDA 32804