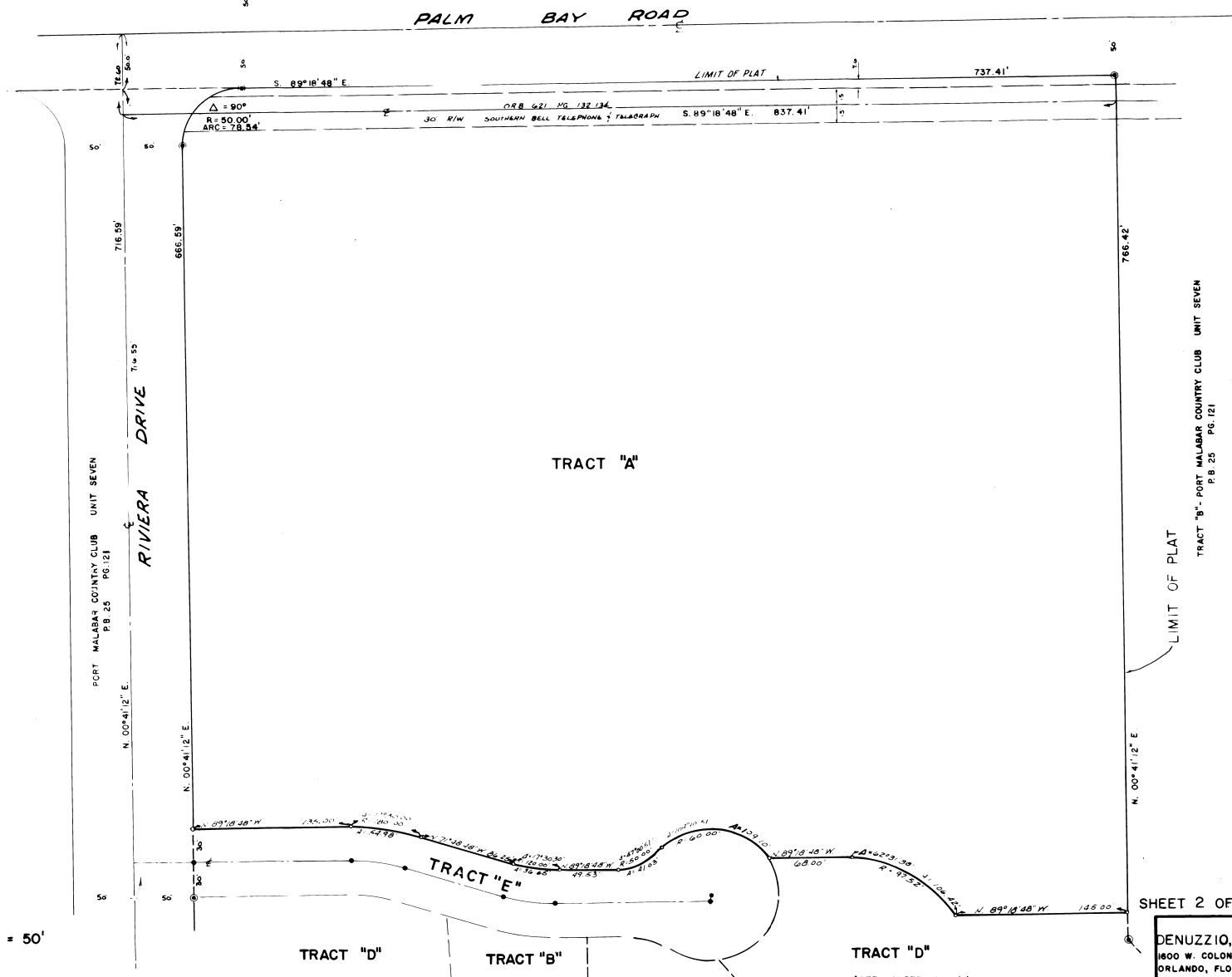


SECOND REPLAT IN
PORT MALABAR COUNTRY CLUB UNIT SEVEN
A RESUBDIVISION OF TRACT "C" "PORT MALABAR COUNTRY CLUB UNIT SEVEN "AS
RECORDED IN PLAT BOOK 25 PAGE 121
SECTION 20 TOWNSHIP 28 SOUTH RANGE 37 EAST
CITY OF PALM BAY BREVARD COUNTY FLORIDA



SCALE : 1" = 50'

SHEET 2 OF 4 0 LOTS THIS SHEET

DENUZZIO, SHALLOWAY, & ASSOCIATES
1600 W. COLONIAL DRIVE
ORLANDO, FLORIDA 32804

PORT MALABAR COUNTRY CLUB UNIT SEVEN
P.B. 25 PG. 121

RIVIERA DRIVE

PALM BAY ROAD

TRACT "A"

TRACT "D"
(SEE SHEET No. 3)

TRACT "B"

TRACT "D"
(SEE SHEET No. 4)

TRACT "B" - PORT MALABAR COUNTRY CLUB UNIT SEVEN
P.B. 25 PG. 121

LIMIT OF PLAT

LIMIT OF PLAT