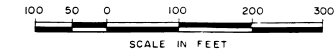


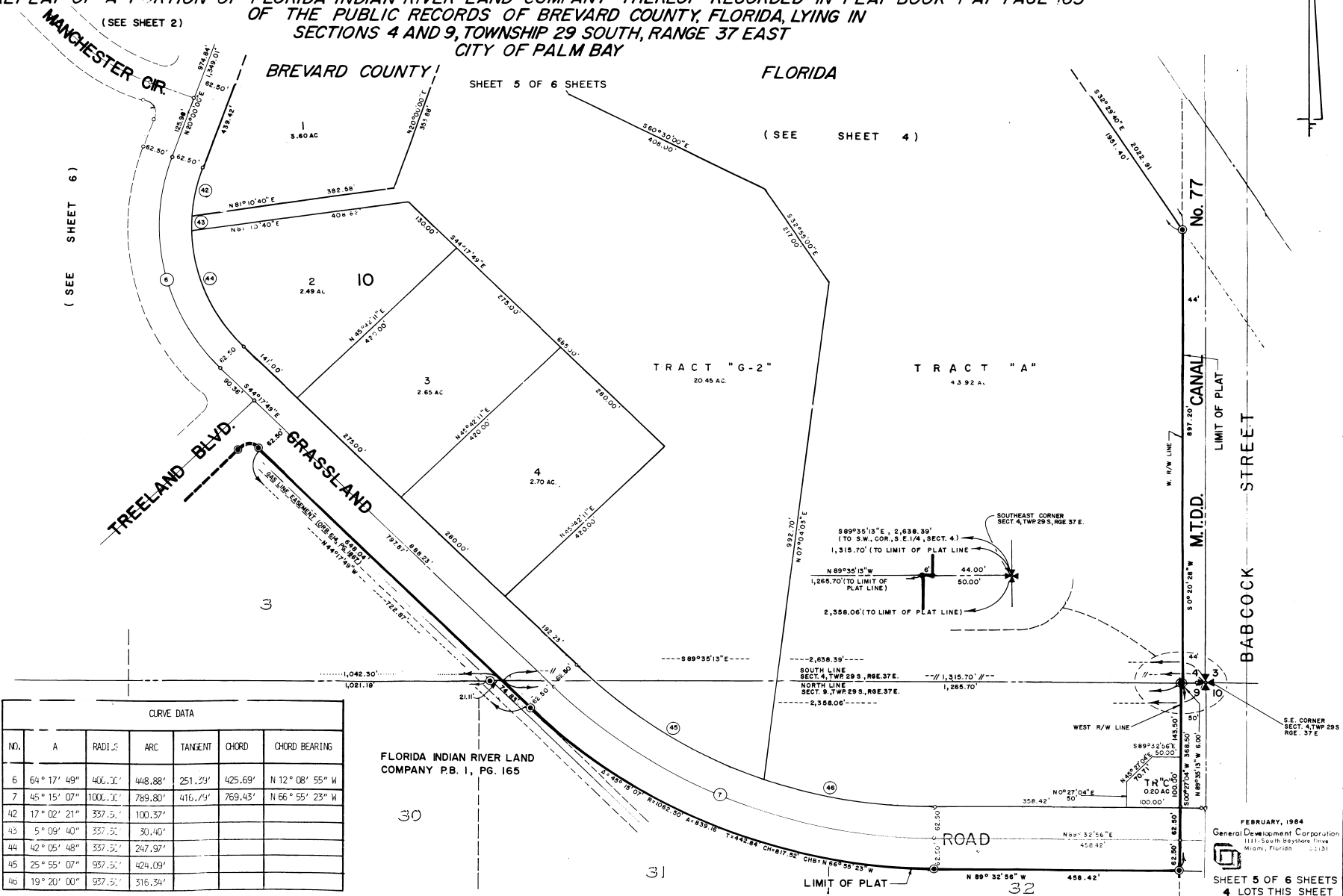


PORT MALABAR INDUSTRIAL PARK UNIT TWO

PLAT BOOK 30
AND PAGE 78



A REPLAT OF A PORTION OF FLORIDA INDIAN RIVER LAND COMPANY THEREOF RECORDED IN PLAT BOOK 1 AT PAGE 165 OF THE PUBLIC RECORDS OF BREVARD COUNTY, FLORIDA, LYING IN SECTIONS 4 AND 9, TOWNSHIP 29 SOUTH, RANGE 37 EAST CITY OF PALM BAY



CURVE DATA						
NO.	A	RADIUS	ARC	TANGENT	CHORD	CHORD BEARING
6	64° 17' 49"	400.00'	448.88'	251.33'	425.69'	N 12° 08' 55" W
7	45° 15' 07"	1000.00'	789.80'	416.79'	769.43'	N 66° 55' 23" W
42	17° 02' 21"	337.50'	100.37'			
43	5° 09' 40"	337.50'	30.40'			
44	42° 05' 48"	337.50'	247.97'			
45	25° 55' 07"	937.50'	424.09'			
46	19° 20' 00"	937.50'	316.34'			

DRAWN BY
CAS GDC
CHECKED BY
APPROVED BY

FEBRUARY, 1964
General Development Corporation
111 South Bayshore Drive
Miami, Florida 33131

SHEET 5 OF 6 SHEETS
4 LOTS THIS SHEET