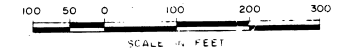




PORT MALABAR INDUSTRIAL PARK UNIT TWO

PLAT BOOK 30
AND PAGE 77

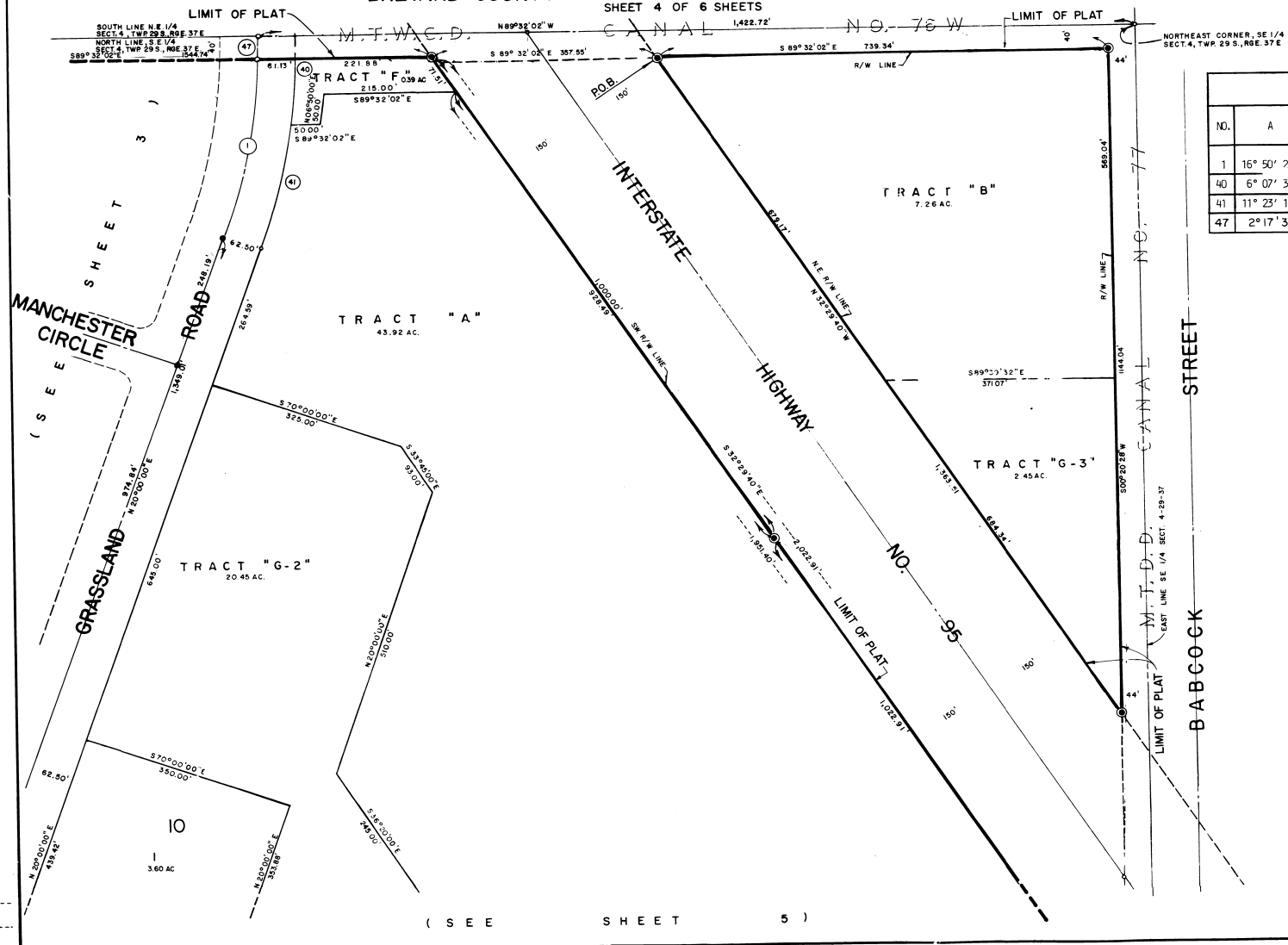


A REPLAT OF A PORTION OF FLORIDA INDIAN RIVER LAND COMPANY THEREOF RECORDED IN PLAT BOOK 1 AT PAGE 165
OF THE PUBLIC RECORDS OF BREVARD COUNTY, FLORIDA, LYING IN
SECTIONS 4 AND 9, TOWNSHIP 29 SOUTH, RANGE 37 EAST
CITY OF PALM BAY

BREVARD COUNTY

SHEET 4 OF 6 SHEETS

FLORIDA



CURVE DATA						
NO.	A	RADIUS	ARC	TANGENT	CHORD	CHORD BEARING
1	16° 50' 23"	1000.00'	285.91'	148.02'	292.85'	N 11° 34' 48" E
40	6° 07' 32"	1030.54'	110.18'			
41	11° 23' 19"	1030.54'	204.84'			
47	2° 17' 34"	10000.00'	40.02'			

DRAWN BY
CAS GDC
CHECKED BY
APPROVED BY

(SEE SHEET 5)

FEBRUARY, 1984
General Development Corporation
1111 South Bayshore Drive
Miami, Florida 33131
SHEET 4 OF 6 SHEETS
LOTS THIS SHEET

PM,IP-2